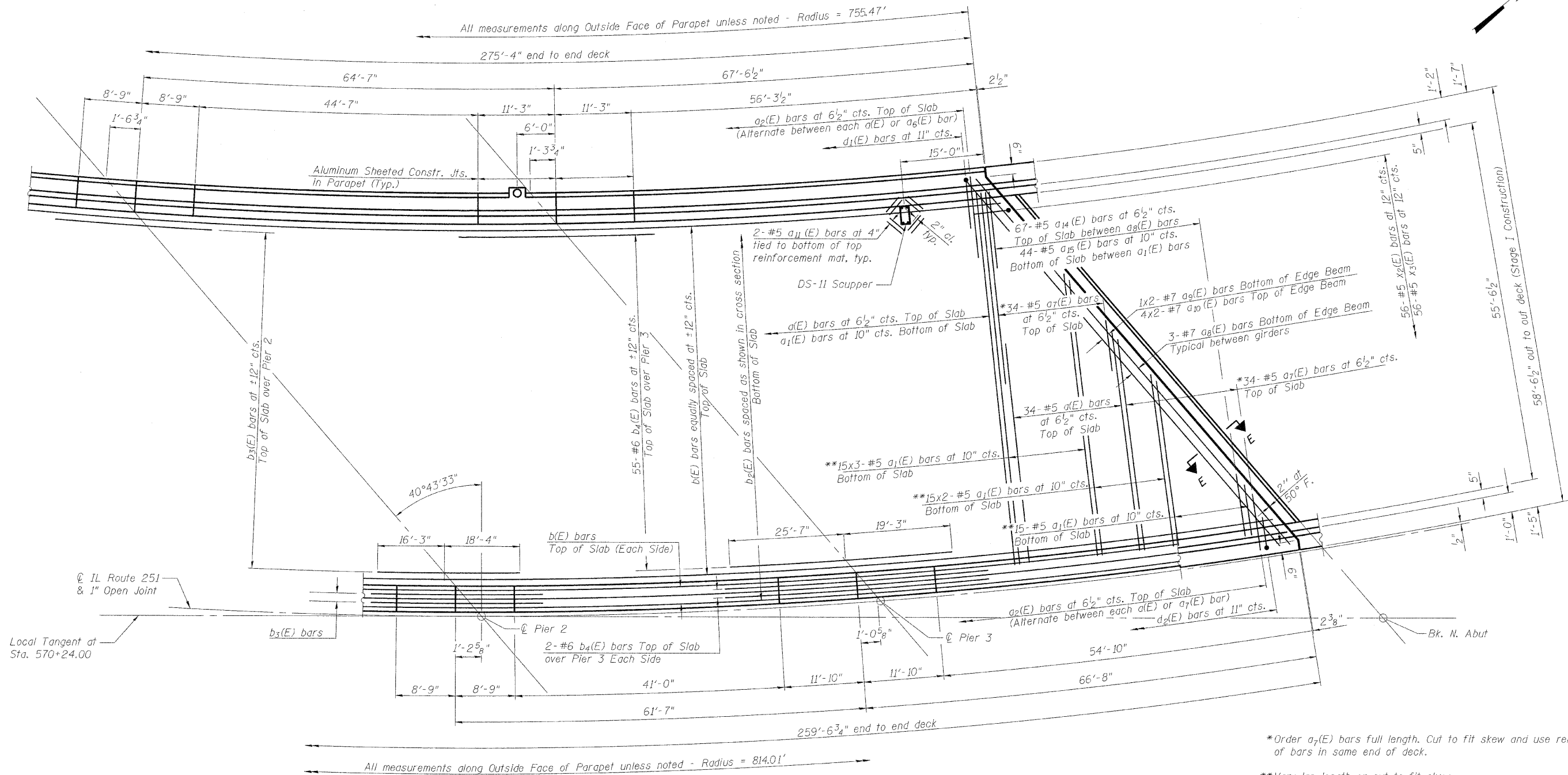


STATE OF ILLINOIS
DEPARTMENT OF TRANSPORTATION



*Order a₇(E) bars full length. Cut to fit skew and use remainder of bars in same end of deck.
**Vary lap length or cut to fit skew.

SOUTHBOUND DECK PLAN - SPANS 3 AND 4

**DECK PLAN - SOUTHBOUND
SPANS 3 AND 4
STRUCTURE NO. 101-0190**

MINIMUM BAR LAPS

- (Deck)
#5 Bar - 2'-7"
#6 Bar - 3'-1"
#7 Bar - 5'-10"

Notes:

See Sheet 17 for deck cross section.
See Sheets 22 and 23 for superstructure details and Bill of Material.
Bars indicated thus 20 x 3-#5 etc. indicates 20 lines of bars with 3 lengths per line.
See Sheet 21 for parapet reinforcement.
Transverse bars shall be placed radially.
Longitudinal bars shall be placed along the curve.
Cut longitudinal reinforcement to clear drainage scupper.

DESIGNED - JY
CHECKED - GSP
DRAWN - MJB
CHECKED - JY

SHEET NO. 16 61 SHEETS	F.A.* RTE.	SECTION	COUNTY	TOTAL SHEETS	SHEET NO.
	*	1-HBR & 1-2HB-D	WINNEBAGO	216	71
IL RTE 251 & FOREST HILLS RD			CONTRACT NO. 64B79		
FED. ROAD DIST. NO. 7 [ILLINOIS] FED. AID PROJECT					

* F.A.P. 303 & F.A.U. 5146

9/20/2010 11:08:13 AM g:\project\208273_001\cadd\structural\sheet\1010190-64B79-016-DeckPlan_SB_384.dgn