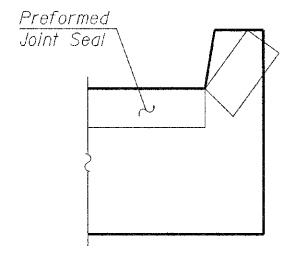
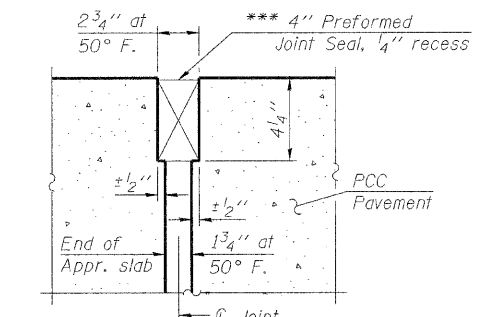
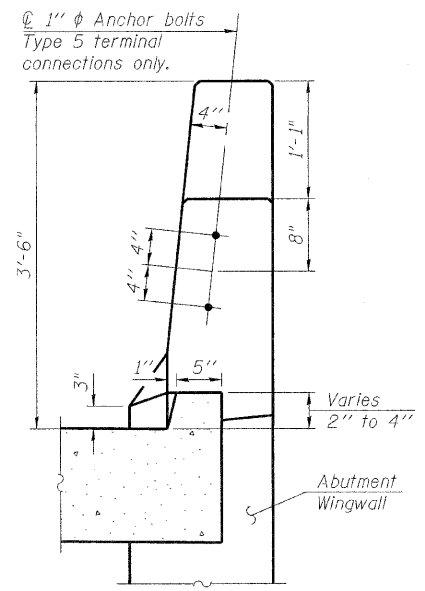
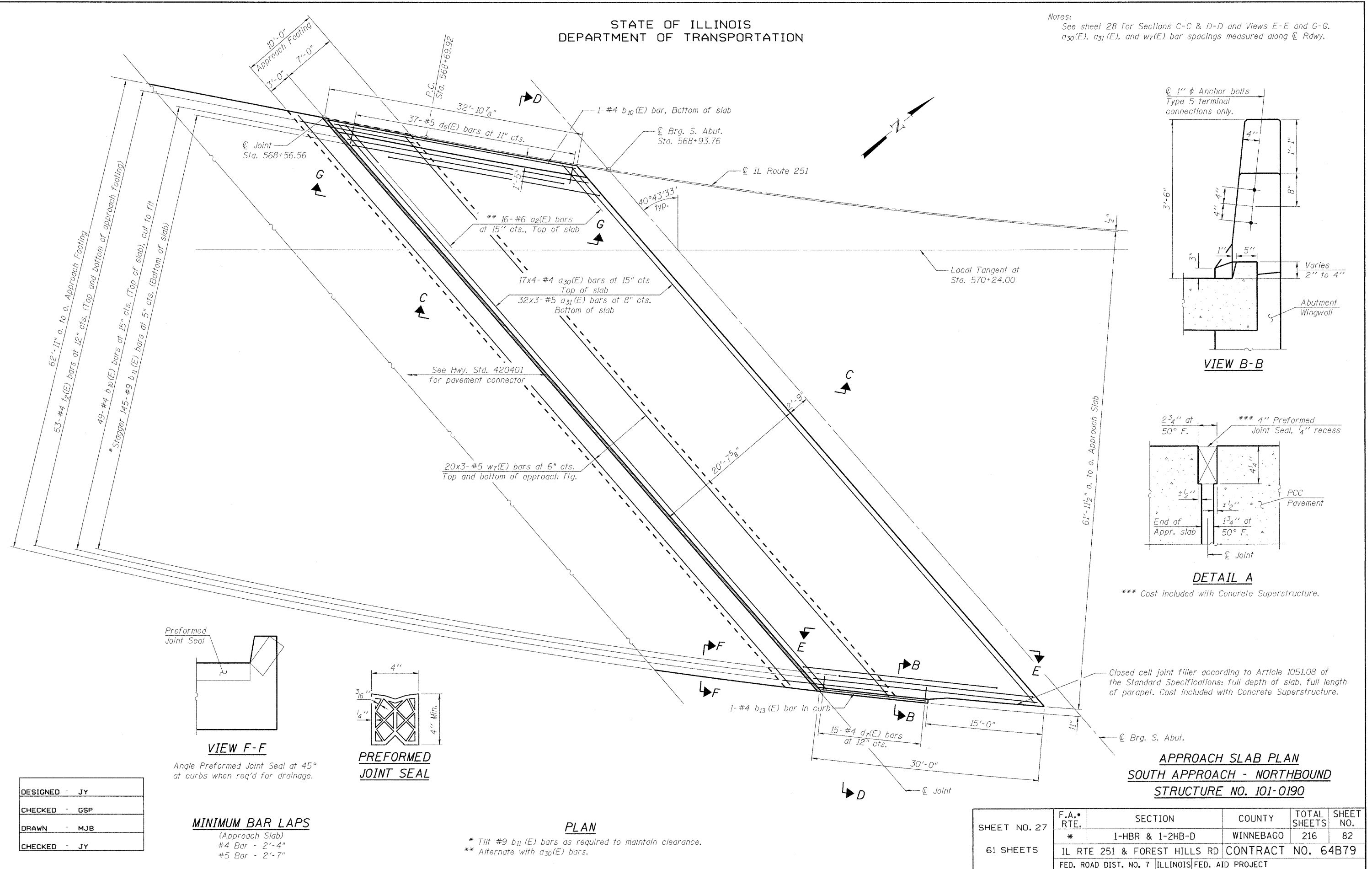
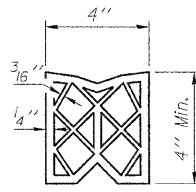


STATE OF ILLINOIS  
DEPARTMENT OF TRANSPORTATION

Notes:  
See sheet 28 for Sections C-C & D-D and Views E-E and G-G.  
 $a_{30}(E)$ ,  $a_{31}(E)$ , and  $w_7(E)$  bar spacings measured along  $\varnothing$  Rdwy.



**VIEW F-F**  
Angle Preformed Joint Seal at 45° at curbs when req'd for drainage.



**PREFORMED JOINT SEAL**

**MINIMUM BAR LAPS**  
(Approach Slab)  
#4 Bar - 2'-4"  
#5 Bar - 2'-7"

**PLAN**  
\* Tilt #9  $b_{11}(E)$  bars as required to maintain clearance.  
\*\* Alternate with  $a_{30}(E)$  bars.

Closed cell joint filler according to Article 1051.08 of the Standard Specifications: full depth of slab, full length of parapet. Cost included with Concrete Superstructure.

**APPROACH SLAB PLAN**  
**SOUTH APPROACH - NORTHBOUND**  
**STRUCTURE NO. 101-0190**

DESIGNED - JY
CHECKED - GSP
DRAWN - MJB
CHECKED - JY

SHEET NO. 27 61 SHEETS	F.A.* RTE.	SECTION	COUNTY	TOTAL SHEETS	SHEET NO.
	*	1-HBR & 1-2HB-D	WINNEBAGO	216	82
IL RTE 251 & FOREST HILLS RD			CONTRACT NO. 64B79		
FED. ROAD DIST. NO. 7 [ILLINOIS] FED. AID PROJECT					

\* F.A.P. 303 & F.A.U. 5146

g:\project\208273\_001\cadd\structural\sheet\1010190-64B79-027-AppPlan\_S\_Abut\_NB.dgn 11:08:49 AM 9/30/2010