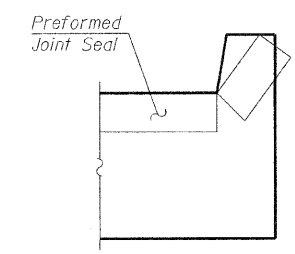
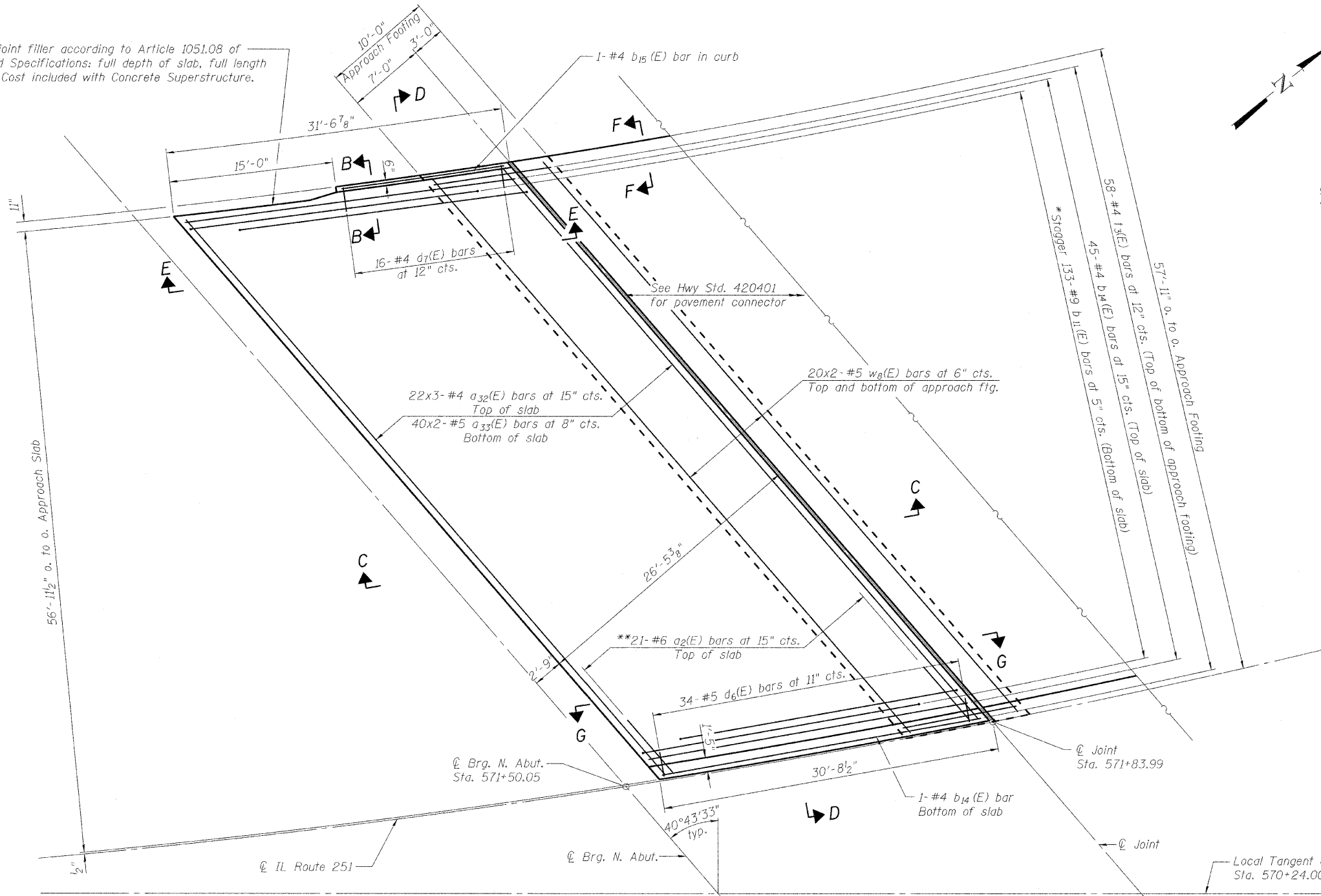


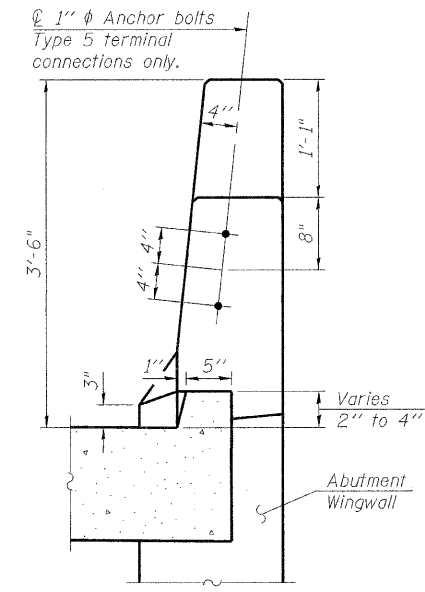
STATE OF ILLINOIS  
DEPARTMENT OF TRANSPORTATION

Notes:  
See sheet 31 for Sections C-C & D-D and Views E-E & G-G.  
 $a_{32}(E)$ ,  $a_{33}(E)$ , and  $w_8(E)$  bar spacings measured perpendicular to  $\phi$  Rdwy.

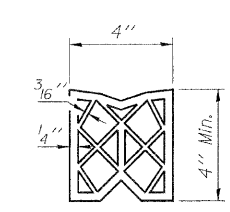
Closed cell joint filler according to Article 1051.08 of the Standard Specifications: full depth of slab, full length of parapet. Cost included with Concrete Superstructure.



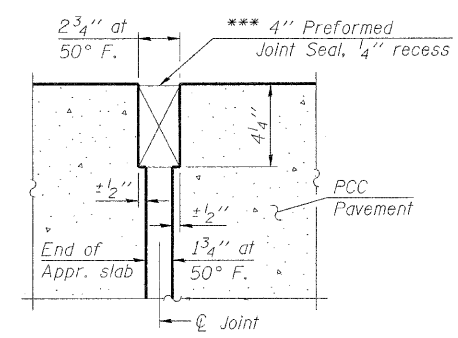
**VIEW F-F**  
Angle Preformed Joint Seal at 45° at curbs when req'd for drainage.



**VIEW B-B**



**PREFORMED JOINT SEAL**



**DETAIL A**

\*\*\* Cost included with Concrete Superstructure.

**MINIMUM BAR LAPS**  
(Approach Slab)  
#4 Bar - 2'-4"  
#5 Bar - 2'-7"

**PLAN**  
\* Tilt #9  $b_{11}(E)$  bars as required to maintain clearance.  
\*\* Alternate with  $a_{32}(E)$  bars.

**APPROACH SLAB PLAN**  
**NORTH APPROACH - SOUTHBOUND**  
**STRUCTURE NO. 101-0190**

DESIGNED - JY
CHECKED - GSP
DRAWN - MJB
CHECKED - JY

SHEET NO. 29	F.A.* RTE.	SECTION	COUNTY	TOTAL SHEETS	SHEET NO.
	*	1-HBR & 1-2HB-D	WINNEBAGO	216	84
61 SHEETS	IL RTE 251 & FOREST HILLS RD CONTRACT NO. 64B79				
FED. ROAD DIST. NO. 7 ILLINOIS FED. AID PROJECT					

\* F.A.P. 303 & F.A.U. 5146