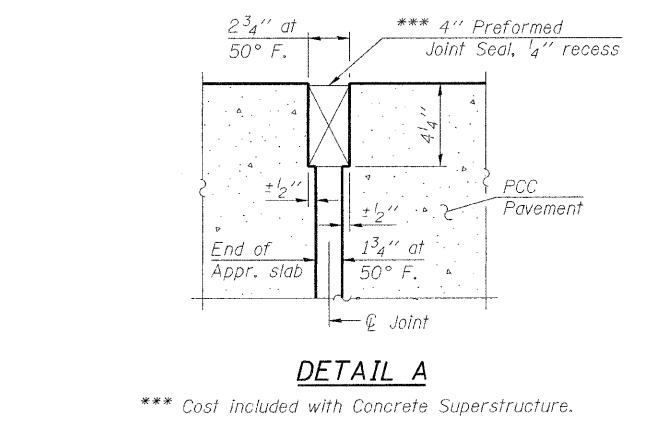
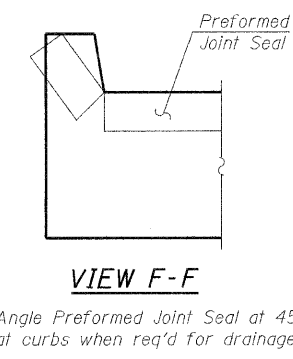
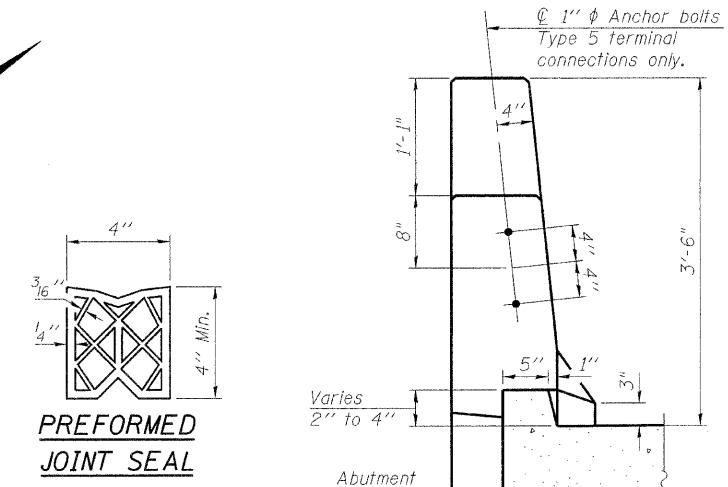
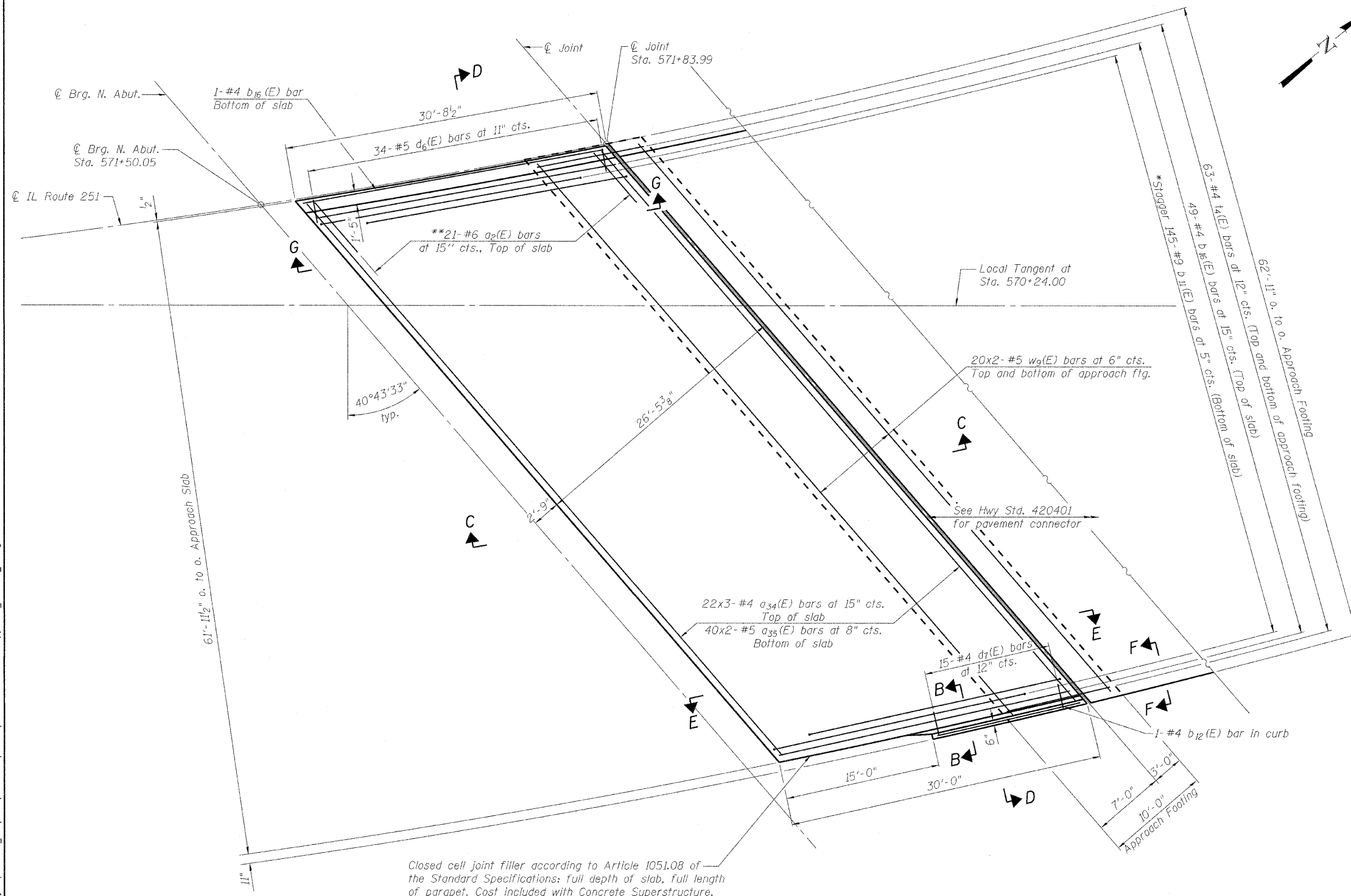


STATE OF ILLINOIS
DEPARTMENT OF TRANSPORTATION

Notes:
See sheet 31 for Sections C-C & D-D and Views E-E & G-G.
 $a_{34}(E)$, $a_{35}(E)$, and $w_9(E)$ bar spacings measured perpendicular to $\text{C} \perp$ Rdwy.



APPROACH SLAB PLAN
NORTH APPROACH - NORTHBOUND
STRUCTURE NO. 101-0190

Closed cell joint filler according to Article 1051.08 of the Standard Specifications: full depth of slab, full length of parapet. Cost included with Concrete Superstructure.

MINIMUM BAR LAPS
(Approach Slab)
#4 Bar - 2'-4"
#5 Bar - 2'-7"

PLAN
* Till #9 $b_{11}(E)$ bars as required to maintain clearance.
** Alternate with $a_{34}(E)$ bars.

DESIGNED - JY
CHECKED - GSP
DRAWN - MJB
CHECKED - JY

SHEET NO. 30	F.A.* RTE.	SECTION	COUNTY	TOTAL SHEETS	SHEET NO.
	*	1-HBR & 1-2HB-D	WINNEBAGO	216	85
61 SHEETS	IL RTE 251 & FOREST HILLS RD		CONTRACT NO. 64B79		
FED. ROAD DIST. NO. 7 ILLINOIS FED. AID PROJECT					

* F.A.P. 303 & F.A.U. 5146