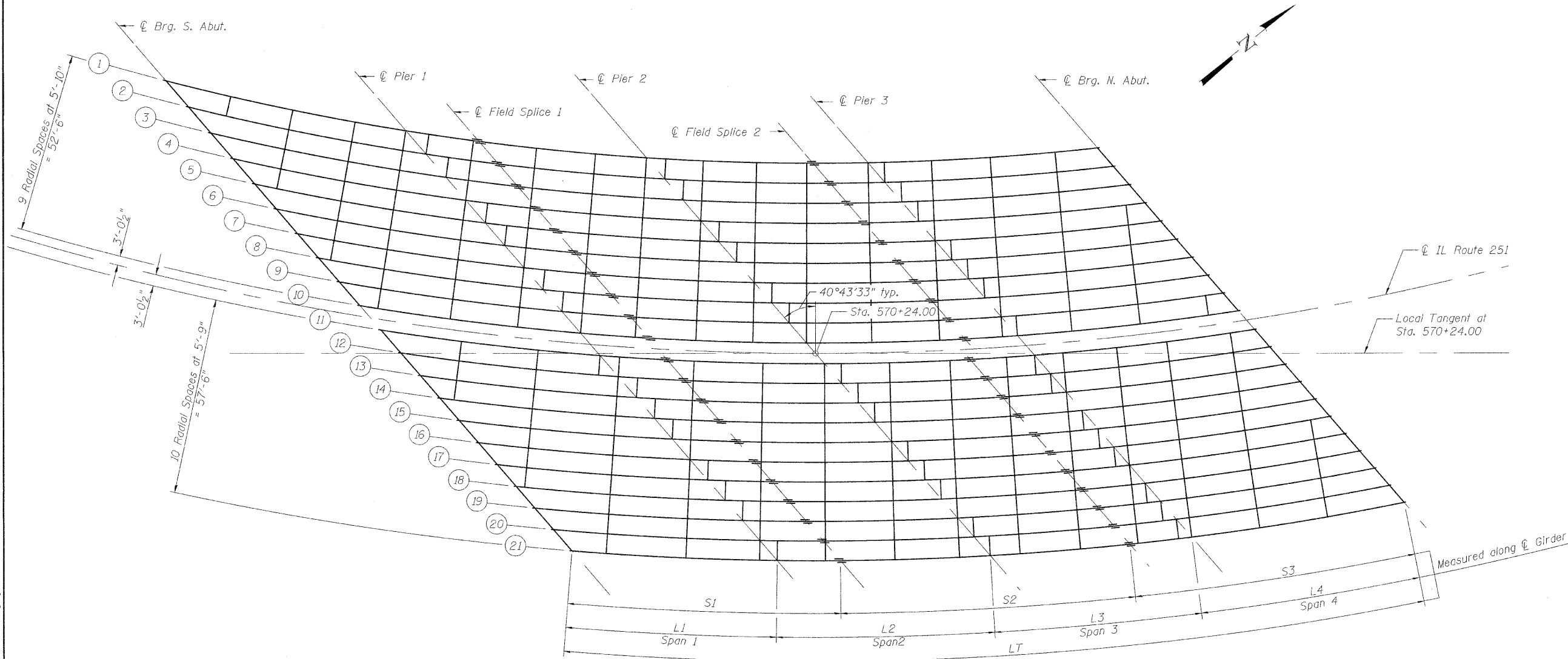


STATE OF ILLINOIS
DEPARTMENT OF TRANSPORTATION



GIRDER GENERAL DIMENSIONS (IN FEET)

Girder No.	Radius	Span 1			Span 2			Span 3			Span 4		LT			
		L1a	L1b	L1=L1a+L1b	L2a	L2b	L2c	L2=L2a+L2b+L2c	L3a	L3b	L3c	L=L3a+L3b+L3c	L4a	L4b	L4=L4a+L4b	LT=L1+L2+L3+L4
Girder 1	758.510	58.750	12.687	71.437	26.813	32.750	10.988	70.551	17.763	26.000	20.851	64.614	19.789	47.250	67.039	273.640
Girder 2	764.343	52.750	17.778	70.528	24.722	33.750	11.461	69.934	15.789	28.000	20.429	64.217	16.749	50.000	66.749	271.428
Girder 3	770.176	52.250	17.422	69.672	22.328	34.000	13.018	69.346	15.232	27.250	21.355	63.837	16.220	50.250	66.470	269.325
Girder 4	776.010	51.250	17.615	68.865	22.385	32.250	14.152	68.786	15.098	26.500	21.873	63.472	15.950	50.250	66.200	267.323
Girder 5	781.843	50.250	17.854	68.104	20.397	34.750	13.105	68.252	14.645	26.250	22.225	63.120	14.940	51.000	65.940	265.415
Girder 6	787.676	49.000	18.383	67.383	19.451	35.250	13.040	67.741	14.960	27.000	20.823	62.782	15.688	50.000	65.688	263.594
Girder 7	793.510	49.000	17.700	66.700	21.050	32.500	13.702	67.253	13.798	25.750	22.909	62.457	15.195	50.250	65.445	261.854
Girder 8	799.343	48.000	18.051	66.051	17.949	35.500	13.336	66.785	13.914	24.750	23.480	62.144	15.209	50.000	65.209	260.189
Girder 9	805.176	46.750	18.685	65.435	17.065	36.000	13.272	66.337	12.728	24.750	24.364	61.842	15.231	49.750	64.981	258.595
Girder 10	811.010	42.750	22.099	64.849	18.901	29.750	17.256	65.907	13.494	22.250	25.807	61.551	14.760	50.000	64.760	257.067
Girder 11	817.093	49.750	14.517	64.267	23.733	30.000	11.744	65.477	15.506	26.500	19.252	61.258	17.288	47.250	64.538	255.540
Girder 12	822.843	47.500	16.242	63.742	24.758	28.750	11.579	65.087	16.171	25.000	19.820	60.991	16.083	48.250	64.333	254.154
Girder 13	828.593	47.250	15.991	63.241	21.009	31.500	12.203	64.712	14.048	26.250	20.436	60.733	13.636	50.500	64.136	252.821
Girder 14	834.343	46.500	16.261	62.761	19.989	31.750	12.612	64.350	14.138	28.500	17.845	60.484	15.443	48.500	63.943	251.539
Girder 15	840.093	47.250	15.052	62.302	19.198	32.250	12.554	64.002	13.946	25.000	21.296	60.242	15.507	48.250	63.757	250.303
Girder 16	845.843	45.250	16.612	61.862	17.388	30.000	16.279	63.667	8.971	28.500	22.537	60.008	15.326	48.250	63.576	249.113
Girder 17	851.593	44.750	16.689	61.439	18.311	32.500	12.533	63.343	13.717	24.000	22.064	59.782	13.400	50.000	63.400	247.964
Girder 18	857.343	44.500	16.534	61.034	18.216	33.250	11.565	63.031	13.935	22.000	23.627	59.562	14.979	48.250	63.229	246.856
Girder 19	863.093	43.000	17.644	60.644	17.856	32.250	12.623	62.729	13.627	24.500	21.223	59.350	14.813	48.250	63.063	245.786
Girder 20	868.843	43.500	16.769	60.269	16.231	34.000	12.207	62.438	15.043	21.250	22.850	59.143	14.651	48.250	62.901	244.751
Girder 21	874.593	41.500	18.409	59.909	17.092	31.000	14.064	62.156	13.436	22.250	23.258	58.943	14.494	48.250	62.744	243.751

Note:
Work this sheet with Sheets 33 thru 42.

DESIGNED - JY
CHECKED - GSP
DRAWN - MJB
CHECKED - JY

GENERAL FRAMING PLAN
STRUCTURE NO. 101-0190

SHEET NO. 32 61 SHEETS	F.A.* RTE.	SECTION	COUNTY	TOTAL SHEETS	SHEET NO.
	*	1-HBR & 1-2HB-D	WINNEBAGO	216	87
		IL RTE 251 & FOREST HILLS RD		CONTRACT NO. 64B79	
		FED. ROAD DIST. NO. 7 [ILLINOIS] FED. AID PROJECT			

* F.A.P. 303 & F.A.U. 5146