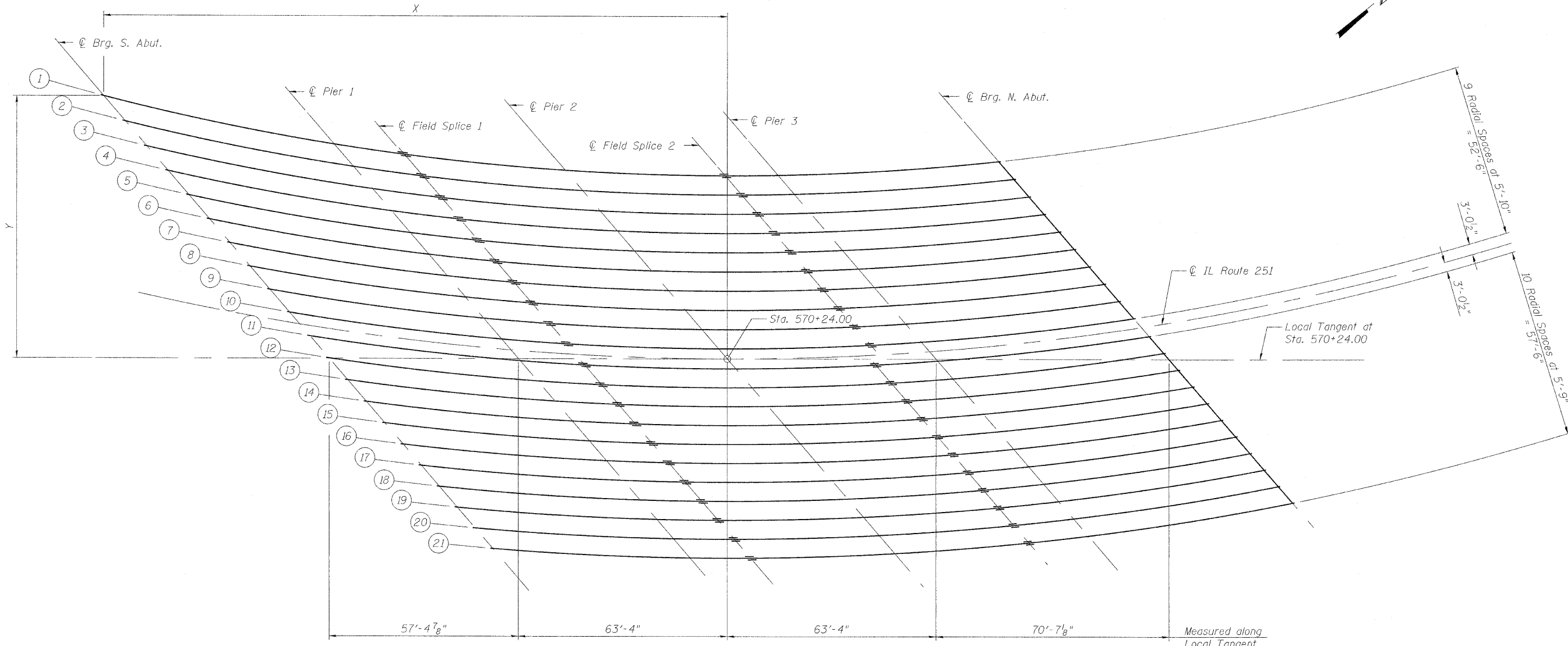


STATE OF ILLINOIS
DEPARTMENT OF TRANSPORTATION



GIRDER LAYOUT DIMENSIONS (IN FEET)

(Measured from intersection of ϕ IL Route 251 and Local Tangent at Sta. 570+24.00)

Girder No.	ϕ Brg. S. Abut.		ϕ Pier 1		ϕ Field Splice 1		ϕ Pier 2		ϕ Field Splice 2		ϕ Pier 3		ϕ Brg. N. Abut.	
	X	Y	X	Y	X	Y	X	Y	X	Y	X	Y	X	Y
Girder 1	-189.195	79.516	-119.280	64.979	-92.731	61.231	-49.192	57.138	-5.464	55.561	15.386	55.698	82.264	60.016
Girder 2	-182.583	71.836	-113.418	58.170	-88.914	54.898	-43.880	50.969	-0.116	49.708	20.311	49.978	86.874	54.661
Girder 3	-176.070	64.271	-107.616	51.431	-85.465	48.632	-38.607	44.843	3.859	43.885	25.210	44.288	91.468	49.326
Girder 4	-169.650	56.813	-101.871	44.757	-79.640	42.139	-33.369	38.759	8.219	38.085	30.085	38.625	96.045	44.008
Girder 5	-163.315	49.456	-96.179	38.147	-75.907	35.902	-28.166	32.716	12.722	32.312	34.937	32.989	100.608	38.709
Girder 6	-157.063	42.193	-90.540	31.596	-71.192	29.599	-22.996	26.711	18.959	26.603	39.766	27.379	105.156	33.426
Girder 7	-150.887	35.019	-84.949	25.102	-63.992	23.126	-17.858	20.743	21.686	20.838	44.574	21.795	109.690	28.160
Girder 8	-144.783	27.930	-79.405	18.662	-61.526	17.080	-12.750	14.810	25.908	15.128	49.362	16.234	114.210	22.910
Girder 9	-138.748	20.920	-73.905	12.274	-56.897	10.888	-7.672	8.912	29.799	9.427	54.129	10.696	118.716	17.675
Girder 10	-132.778	13.985	-68.448	5.935	-49.597	4.560	-2.623	3.046	33.112	3.718	58.877	5.182	123.210	12.455
Girder 11	-126.616	6.828	-62.800	-0.625	-39.114	-2.105	2.615	-3.037	44.599	-1.824	63.808	-0.546	127.883	7.028
Girder 12	-120.851	0.131	-57.501	-6.780	-32.781	-8.138	7.539	-8.757	48.682	-7.350	68.451	-5.940	132.287	1.912
Girder 13	-115.139	-6.503	-52.238	-12.893	-31.256	-13.952	12.439	-14.448	52.701	-12.864	73.078	-11.313	136.681	-3.191
Girder 14	-109.479	-13.078	-47.009	-18.966	-27.041	-19.853	17.315	-20.112	59.903	-18.138	77.687	-16.667	141.062	-8.281
Girder 15	-103.867	-19.596	-41.814	-25.000	-22.631	-25.737	22.168	-25.749	61.062	-23.820	82.281	-22.003	145.433	-13.358
Girder 16	-98.302	-26.060	-36.652	-30.997	-19.273	-31.572	26.999	-31.361	64.413	-29.336	86.859	-27.320	149.794	-18.422
Girder 17	-92.782	-32.472	-31.520	-36.958	-13.216	-37.439	31.809	-36.947	69.456	-34.704	91.422	-32.620	154.144	-23.475
Girder 18	-87.304	-38.835	-26.418	-42.885	-8.205	-43.252	36.598	-42.510	72.458	-40.224	95.970	-37.903	158.484	-28.516
Girder 19	-81.867	-45.150	-21.344	-48.778	-3.490	-49.035	41.367	-48.050	79.397	-45.382	100.504	-43.170	162.814	-33.546
Girder 20	-76.469	-51.420	-16.298	-54.639	-0.068	-54.792	46.117	-53.567	82.308	-50.884	105.024	-48.421	167.135	-38.565
Girder 21	-71.109	-57.646	-11.279	-60.469	5.812	-60.522	50.848	-59.062	86.421	-56.261	109.532	-53.656	171.446	-43.573

Note:
Work this sheet with Sheets 32 thru 42.

DESIGNED	- JY
CHECKED	- GSP
DRAWN	- MJB
CHECKED	- JY

**GIRDER LAYOUT
STRUCTURE NO. 101-0190**

SHEET NO. 33 61 SHEETS	F.A.* RTE.	SECTION	COUNTY	TOTAL SHEETS	SHEET NO.
	*	1-HBR & 1-2HB-D	WINNEBAGO	216	88
IL RTE 251 & FOREST HILLS RD CONTRACT NO. 64B79					
FED. ROAD DIST. NO. 7 [ILLINOIS] FED. AID PROJECT					

* F.A.P. 303 & F.A.U. 5146

9/20/2010 11:09:07 AM g:\project\2082773_001\cadd\structural\sheets\1010190-64B79-033-GirderLayout.dgn