

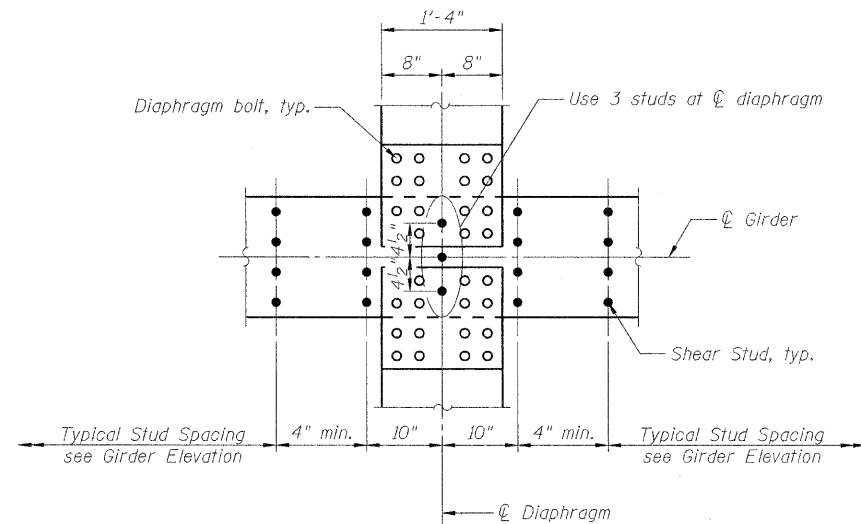
STATE OF ILLINOIS  
DEPARTMENT OF TRANSPORTATION

**\* SHEAR STUD TABLE**

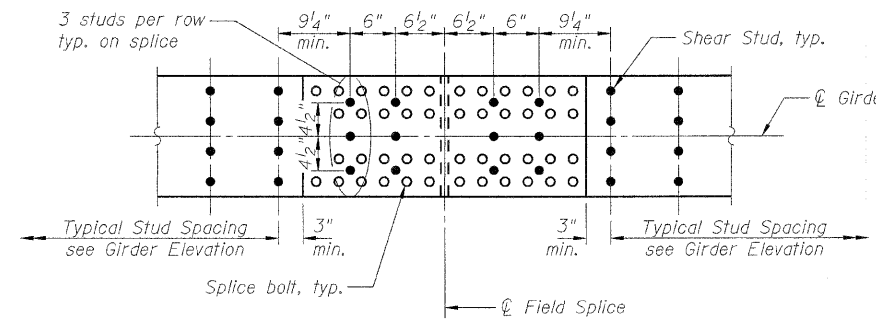
	Girder No.	n1	a (ft)	n2	b (ft)	n3	c (ft)	n4	d (ft)	n5	e (ft)	n6	f (ft)	n7	g (ft)
Southbound	Girder 1	70	58.333	34	36.833	28	30.333	21	28.000	17	22.667	33	38.500	39	45.500
	Girder 2	63	52.500	36	39.000	29	31.417	20	26.667	18	24.000	30	35.000	42	49.000
	Girder 3	62	51.667	34	36.833	29	31.417	21	28.000	18	24.000	30	35.000	42	49.000
	Girder 4	61	50.833	34	36.833	28	30.333	21	28.000	18	24.000	30	35.000	43	50.167
	Girder 5	60	50.000	32	34.667	30	32.500	20	26.667	17	22.667	30	35.000	43	50.167
	Girder 6	58	48.333	32	34.667	30	32.500	20	26.667	19	25.333	29	33.833	42	49.000
	Girder 7	58	48.333	33	35.750	28	30.333	20	26.667	17	22.667	31	36.167	42	49.000
	Girder 8	57	47.500	31	33.583	31	33.583	19	25.333	17	22.667	31	36.167	42	49.000
	Girder 9	56	46.667	30	32.500	31	33.583	19	25.333	16	21.333	32	37.333	42	49.000
	Girder 10	51	42.500	35	37.917	25	27.083	22	29.333	15	20.000	33	38.500	42	49.000
Northbound	Girder 11	49	49.000	28	35.000	22	27.500	21	26.250	16	24.000	23	34.500	39	45.500
	Girder 12	47	47.000	30	37.500	21	26.250	21	26.250	15	22.500	22	33.000	41	47.833
	Girder 13	47	47.000	27	33.750	23	28.750	20	25.000	16	24.000	21	31.500	43	50.167
	Girder 14	46	46.000	27	33.750	23	28.750	21	26.250	17	25.500	20	30.000	41	47.833
	Girder 15	47	47.000	25	31.250	24	30.000	20	25.000	15	22.500	23	34.500	40	46.667
	Girder 16	45	45.000	25	31.250	22	27.500	19	23.750	17	25.500	24	36.000	40	46.667
	Girder 17	44	44.000	26	32.500	24	30.000	20	25.000	14	21.000	22	33.000	42	49.000
	Girder 18	44	44.000	25	31.250	25	31.250	19	23.750	13	19.500	24	36.000	41	47.833
	Girder 19	43	43.000	26	32.500	24	30.000	20	25.000	14	21.000	22	33.000	41	47.833
	Girder 20	43	43.000	24	30.000	25	31.250	21	26.250	12	18.000	23	34.500	41	47.833
	Girder 21	41	41.000	26	32.500	23	28.750	21	26.250	13	19.500	23	34.500	41	47.833

\* Adjust spacing at splices and diaphragm connections per the details provided on this sheet.

All cross-frames or diaphragms shall be installed as steel is erected and secured with erection pins and bolts except as otherwise noted. Individual cross frames or diaphragms at supports may be temporarily disconnected to install bearing anchor rods.



**SHEAR STUD PLAN AT DIAPHRAGM**



**SHEAR STUD PLAN AT SPLICE**

Note:  
Work this sheet with Sheet 38.

**SHEAR STUD LAYOUT  
STRUCTURE NO. 101-0190**

DESIGNED - JY
CHECKED - GSP
DRAWN - MJB
CHECKED - JY

SHEET NO. 39 61 SHEETS	F.A.* RTE.	SECTION	COUNTY	TOTAL SHEETS	SHEET NO.
	*	1-HBR & 1-2HB-D	WINNEBAGO	216	94
IL RTE 251 & FOREST HILLS RD CONTRACT NO. 64B79					
FED. ROAD DIST. NO. 7 [ILLINOIS] FED. AID PROJECT					

\* F.A.P. 303 & F.A.U. 5146