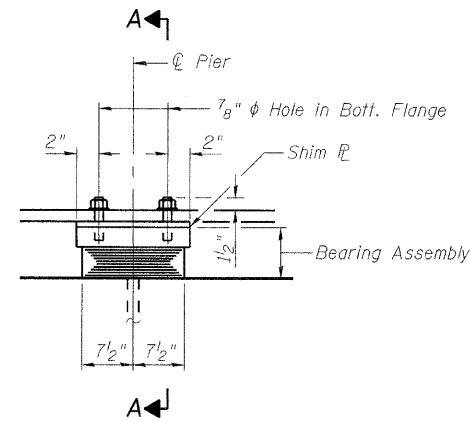
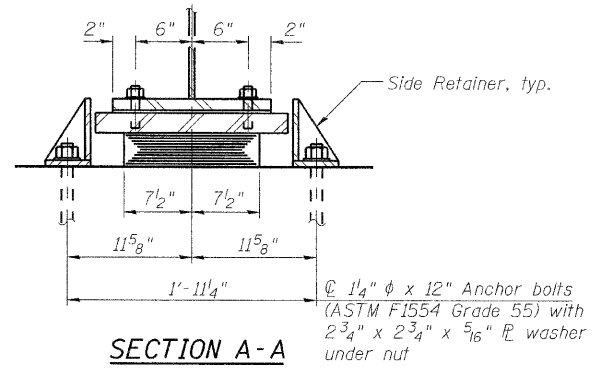


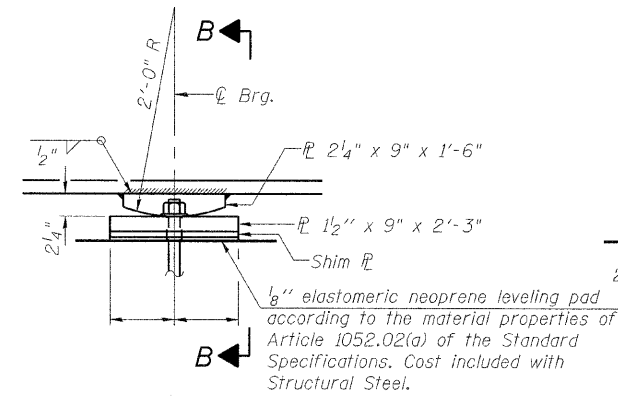
STATE OF ILLINOIS  
DEPARTMENT OF TRANSPORTATION



ELEVATION AT PIER

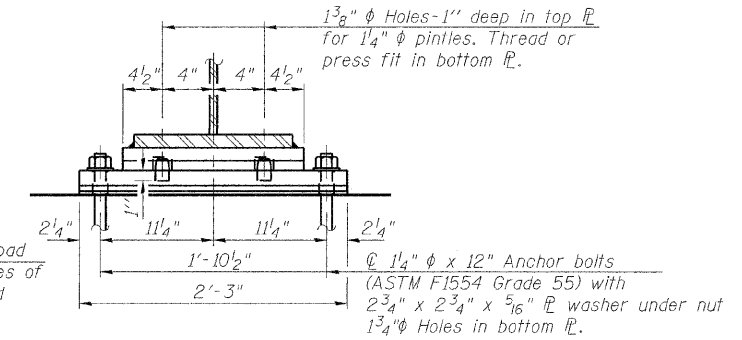


SECTION A-A



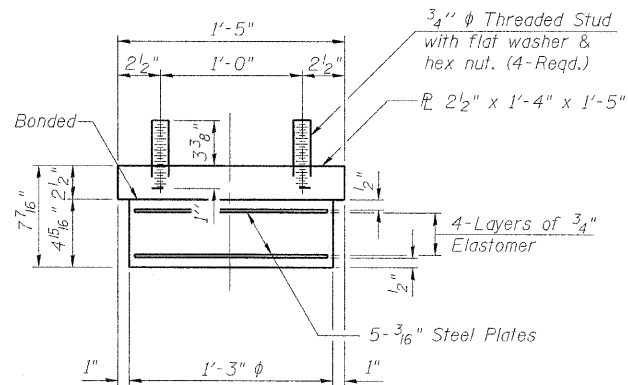
ELEVATION AT PIER 2

FIXED BEARING AT PIER 2



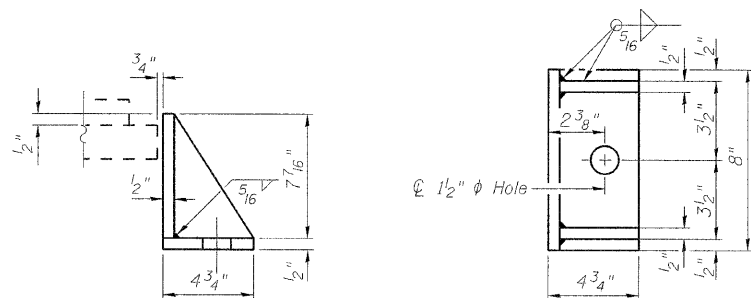
SECTION B-B

TYPE I ELASTOMERIC EXP. BRG. AT PIERS 1 AND 3



BEARING ASSEMBLY

Note:  
Shim plates shall not be placed under Bearing Assembly.



SIDE RETAINER

Equivalent rolled angle with stiffeners will be allowed in lieu of welded plates.

Notes:

Anchor bolts shall be ASTM F1554 all-thread (or an Engineer-approved alternate material) of the grade(s) and diameter(s) specified. The corresponding specified grade of AASHTO M314 anchor bolts may be used in lieu of ASTM F1554.

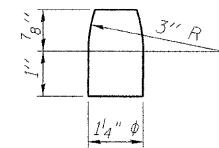
Anchor bolts at fixed bearings may be either cast in place or installed in holes drilled after the supported member is in place.

Anchor bolts for side retainers may be cast in place or installed in holes drilled before or after members are in place.

Drilled and set anchor bolts shall be installed according to Article 521.06 of the Standard Specifications.

Side retainers and other steel members required for the elastomeric bearing assembly shall be included in the cost of Elastomeric Bearing Assembly, Type I (Special).

Two 1/8 inch adjusting shim shall be provided for each bearing in addition to all adjusting shims and leveling plans shown on the plans.



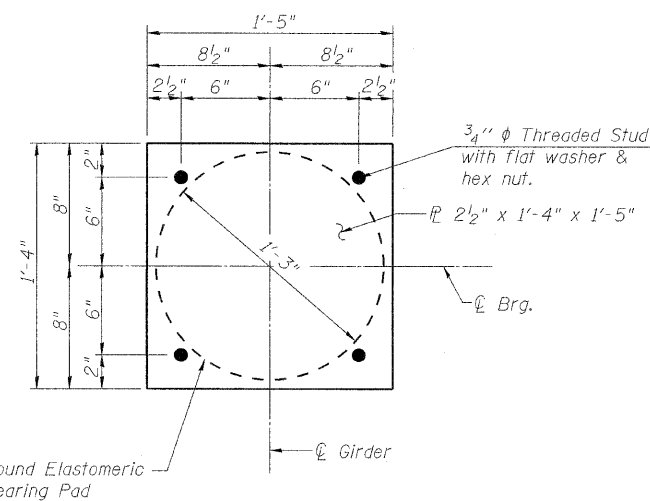
PINTLE

REQUIRED SHIM PLATE TABLES

| PIER 1 |               |           |
|--------|---------------|-----------|
| Girder | Size (in.)    | Thickness |
| 8      | 1'-4" x 1'-5" | 5/8"      |
| 10     | 1'-4" x 1'-5" | 5/8"      |
| 12     | 1'-4" x 1'-5" | 1/2"      |
| 14     | 1'-4" x 1'-5" | 1/2"      |
| 16     | 1'-4" x 1'-5" | 3/8"      |
| 18     | 1'-4" x 1'-5" | 3/8"      |
| 19     | 1'-4" x 1'-5" | 5/8"      |
| 21     | 1'-4" x 1'-5" | 1/4"      |

| PIER 2 |            |           |
|--------|------------|-----------|
| Girder | Size (in.) | Thickness |
| 2      | 9" x 2'-3" | 3/8"      |
| 3      | 9" x 2'-3" | 5/8"      |
| 5      | 9" x 2'-3" | 5/8"      |
| 6      | 9" x 2'-3" | 3/8"      |
| 7      | 9" x 2'-3" | 5/8"      |
| 8      | 9" x 2'-3" | 5/8"      |
| 10     | 9" x 2'-3" | 1/2"      |
| 12     | 9" x 2'-3" | 1/2"      |
| 13     | 9" x 2'-3" | 1/2"      |
| 14     | 9" x 2'-3" | 1/2"      |
| 15     | 9" x 2'-3" | 3/8"      |
| 16     | 9" x 2'-3" | 3/8"      |
| 17     | 9" x 2'-3" | 1/2"      |
| 18     | 9" x 2'-3" | 1/2"      |
| 19     | 9" x 2'-3" | 1/2"      |
| 20     | 9" x 2'-3" | 5/8"      |
| 21     | 9" x 2'-3" | 5/8"      |

| PIER 3 |               |           |
|--------|---------------|-----------|
| Girder | Size (in.)    | Thickness |
| 1      | 1'-4" x 1'-5" | 3/8"      |
| 2      | 1'-4" x 1'-5" | 1/4"      |
| 4      | 1'-4" x 1'-5" | 1/8"      |
| 5      | 1'-4" x 1'-5" | 5/8"      |
| 6      | 1'-4" x 1'-5" | 1/2"      |
| 7      | 1'-4" x 1'-5" | 5/8"      |
| 8      | 1'-4" x 1'-5" | 1/4"      |
| 9      | 1'-4" x 1'-5" | 1/2"      |
| 17     | 1'-4" x 1'-5" | 1/2"      |
| 18     | 1'-4" x 1'-5" | 1/4"      |
| 19     | 1'-4" x 1'-5" | 3/8"      |
| 20     | 1'-4" x 1'-5" | 1/2"      |



PLAN AT EXPANSION BEARING

BILL OF MATERIAL

| Item  | Unit | Total |
|---|------|-------|
| Elastomeric Bearing Assembly Type I (Special) | Each | 42    |
| Anchor Bolts, 1/4"                            | Each | 126   |

BEARING DETAILS (1 OF 2)  
STRUCTURE NO. 101-0190

|               |
|---------------|
| DESIGNED - JY |
| CHECKED - GSP |
| DRAWN - MJB   |
| CHECKED - JY  |

| SHEET NO. 43                                      | F.A.* RTE. | SECTION         | COUNTY    | TOTAL SHEETS | SHEET NO. |
|---|------------|-----------------|-----------|--------------|-----------|
| 61 SHEETS   | *          | 1-HBR & 1-2HB-D | WINNEBAGO | 216          | 98        |
| IL RTE 251 & FOREST HILLS RD CONTRACT NO. 64B79   |            |                 |           |              |           |
| FED. ROAD DIST. NO. 7 [ILLINOIS] FED. AID PROJECT |            |                 |           |              |           |

\* F.A.P. 303 & F.A.U. 5146