

Bench Mark: Chiseled square on South end of crash wall, West Pier. Elev. 724.66.

Existing Structure: S.N. 101-0123 built in 1971 as F.A.U. Rte. 5146, Section 1-2HB at Station 688+32.18. Repainted in 1985; rehabilitated and overlaid in 2005. The superstructure consists of a R.C. deck 332'-10" back to back of abutments and 26'-6" out to out, supported on three-span continuous steel plate girders, on stub abutments and column frame piers. Traffic shall be detoured during construction.

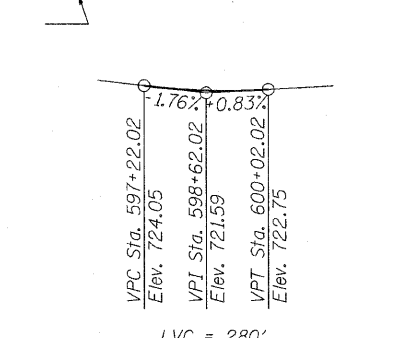
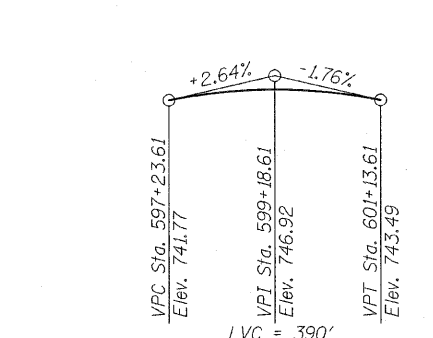
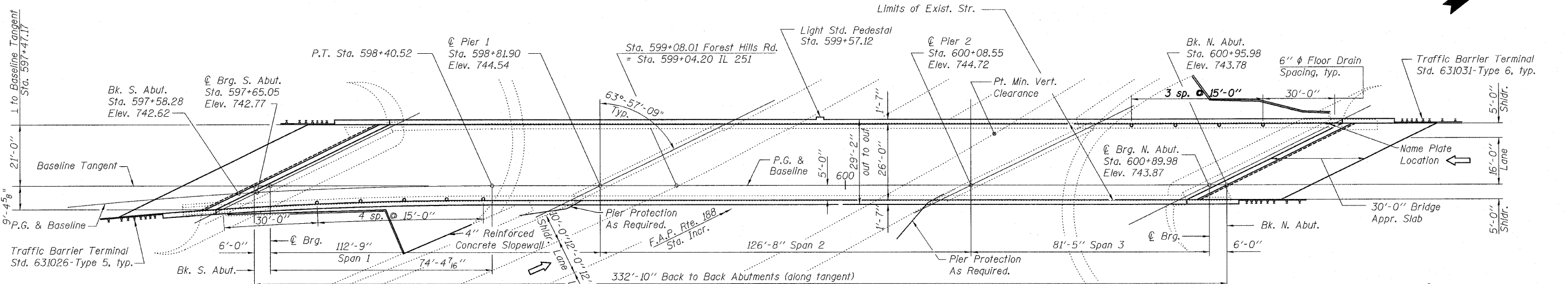
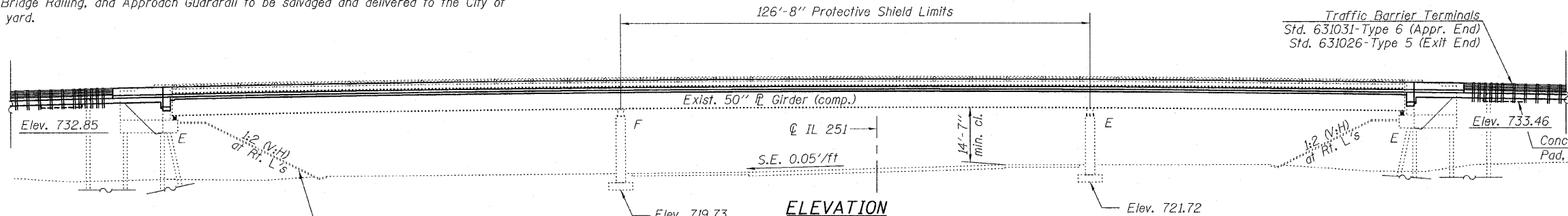
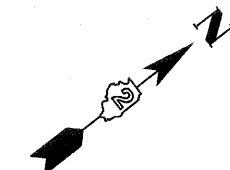
Existing Light Poles, Bridge Railing, and Approach Guardrail to be salvaged and delivered to the City of Rockford maintenance yard.

STATE OF ILLINOIS
DEPARTMENT OF TRANSPORTATION

STATION 599+04.02
RE-BUILT 20 BY
STATE OF ILLINOIS
LOADING HL-93
STRUCTURE NO. 101-0123

NAME PLATE
See Std. 515001

Note:
Existing Name Plate shall be cleaned
and relocated next to new Name Plate.
Cost included with Name Plates.



CURVE DATA

EXIST/PROP. CURVE FAU RTE 5146	EXIST. CURVE FAP RTE 188 (From Survey)
$\Delta = 16^\circ 30' 01''$ (RT)	$\Delta = 28^\circ 14' 53''$ (LT)
$D = 4^\circ 00'$	$D = 4^\circ 32' 15''$
$R = 1,432.39'$	$R = 1,262.73'$
$L = 412.51'$	$L = 622.55'$
$T = 207.69'$	$T = 317.74'$
$E = 14.98'$	$E = 39.36'$
$SE = 0.05$ ' / ' **	$SE = 0.05$ ' / ' **

Note:
All longitudinal dimensions are
tangent to Baseline at Sta. 598+40.52

DESIGN STRESSES

NEW FIELD UNITS
 $f'_c = 3,500$ psi
 $f_y = 60,000$ psi (reinforcement)
 $f_y = 36,000$ psi (M270 Grade 36)

EXISTING CONSTRUCTION
 $f'_c = 1,400$ psi
 $f_s = 20,000$ psi (reinforcement)
 $f_s = 20,000$ psi (structural steel)

SEISMIC DATA

Seismic Performance Category (SPC) = A
 Bedrock Acceleration Coefficient (A) = .04g
 Site Coefficient (S) = 1.2

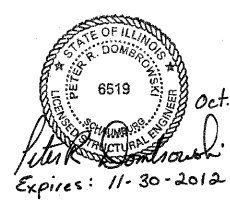
LOADING HS20-44

No allowance made for Future Wearing Surface

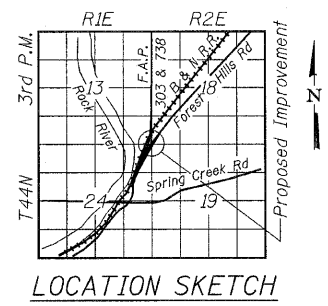
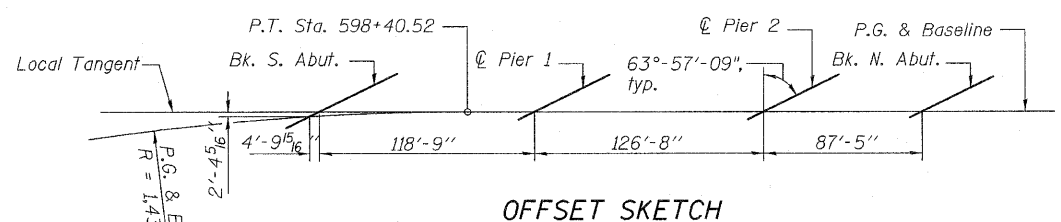
DESIGN SPECIFICATIONS
2002 AASHTO (17th. Edition)

APPROVED
FOR STRUCTURAL ADEQUACY ONLY

Ralph E. Anderson (PE)
ENGINEER OF BRIDGES AND STRUCTURES



DESIGNED	PRD
CHECKED	KPS
DRAWN	PRD
CHECKED	KPS



GENERAL PLAN & ELEVATION
FOREST HILLS ROAD OVER IL 251
FAU 5146 SECTION 1-2HB-D
WINNEBAGO COUNTY
STATION 599+04.20
STRUCTURE NO. 101-0123

rjngroup
Excellence through Ownership
200 West Front Street
Wheaton, IL 60187
PH. 630.682.4700

SHEET NO. 1 OF 33 SHEETS	F.A.P. & F.A.U. RTE. & RTE.	SECTION	COUNTY	TOTAL SHEETS	SHEET NO.
	303 5146	1-HBR & 1-2HB-D	WINNEBAGO	216	117
	CONTRACT NO. 64B79				
FED. ROAD DIST. NO. 2 ILLINOIS FED. AID PROJECT					