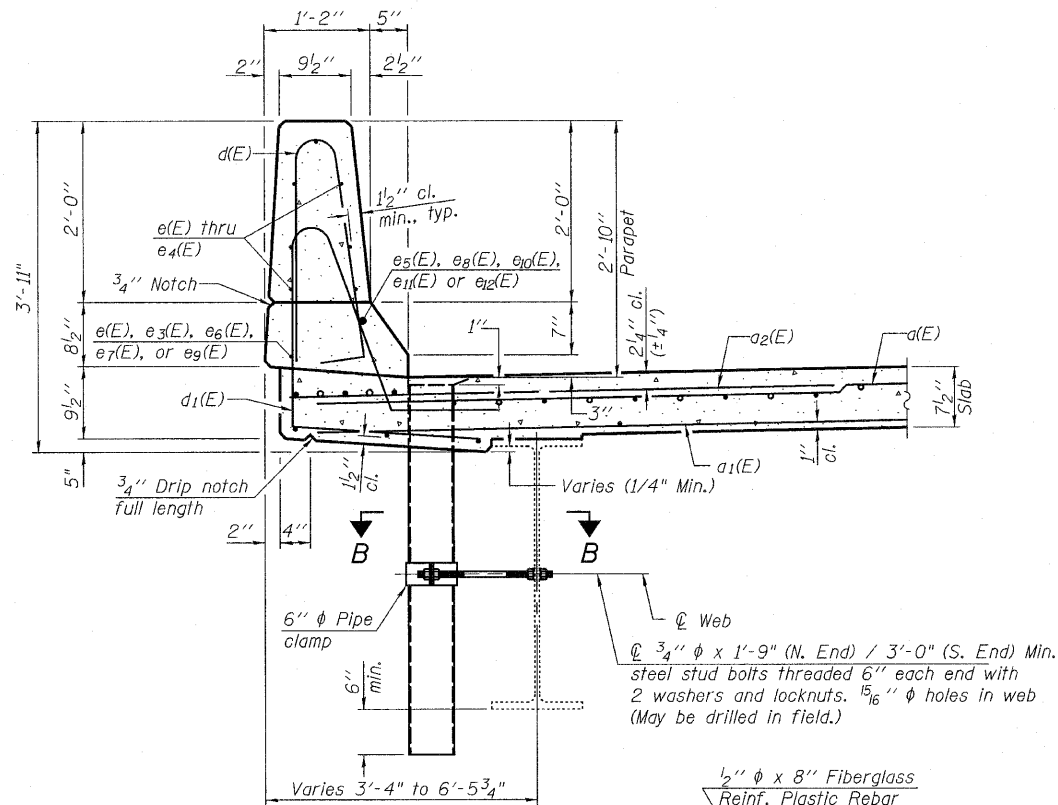
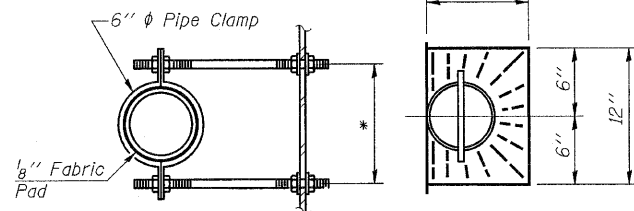


STATE OF ILLINOIS
DEPARTMENT OF TRANSPORTATION



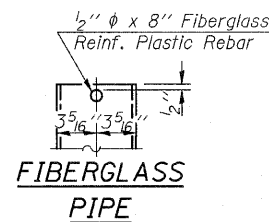
SECTION THRU PARAPET



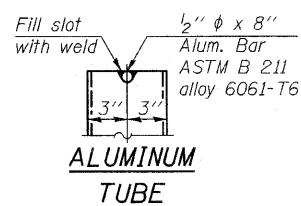
SECTION B-B

* Dimension as required by Pipe Clamp

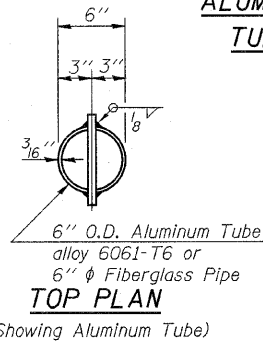
TOP PLAN



FIBERGLASS PIPE



ALUMINUM TUBE

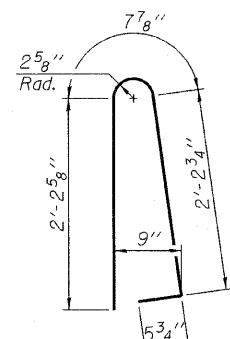


TOP PLAN

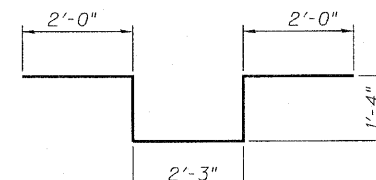
(Showing Aluminum Tube)

Notes:

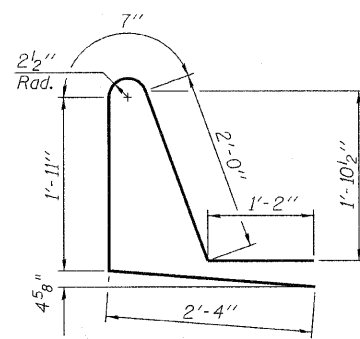
- Drains shall be located clear of all diaphragms.
- The exterior surfaces of the floor drains shall be painted with the finish coat as specified in the special provisions for Cleaning and Painting New Metal Structures. The exterior surfaces of the drains shall be cleaned according to Steel Structures Painting Council's Spec. SSPC-SPI prior to painting.
- Fiberglass pipe shall conform to ASTM D 2996, with short-time rupture strength hoop tensile stress of 30,000 p.s.i. minimum.



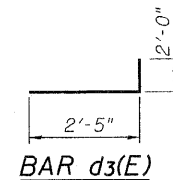
BAR d(E)



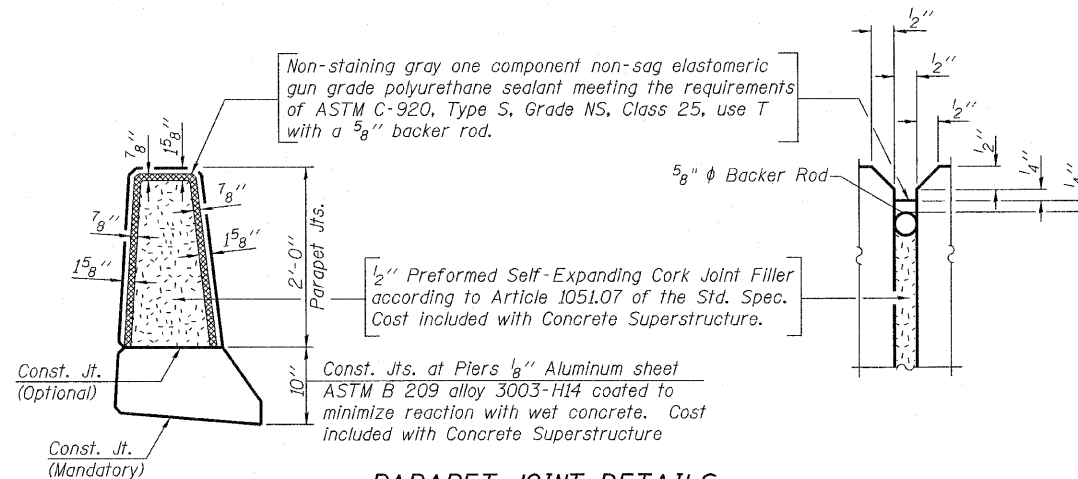
BAR d2(E)



BAR d1(E)



BAR d3(E)



PARAPET JOINT DETAILS

SUPERSTRUCTURE
BILL OF MATERIAL

Bar	No.	Size	Length	Shape
a(E)	581	#5	28'-6"	
a1(E)	400	#5	28'-6"	
a2(E)	704	#6	6'-6"	
a3(E)	123	#5	29'-0"	
a4(E)	84	#5	29'-0"	
a5(E)	25	#5	8'-0"	
a7(E)	20	#5	32'-8"	
a8(E)	18	#5	15'-5"	
b(E)	354	#5	32'-2"	
b1(E)	58	#6	39'-9"	
b2(E)	432	#5	29'-3"	
b3(E)	58	#6	32'-7"	
d(E)	711	#5	5'-7"	
d1(E)	711	#5	8'-0"	
d2(E)	5	#5	8'-11"	
d3(E)	3	#6	4'-5"	
e(E)	32	#4	17'-11"	
e1(E)	70	#4	17'-6"	
e2(E)	70	#4	15'-2"	
e3(E)	46	#4	15'-5"	
e4(E)	56	#4	16'-6"	
e5(E)	4	#8	27'-8"	
e6(E)	4	#4	25'-9"	
e7(E)	16	#4	26'-11"	
e8(E)	16	#8	28'-11"	
e9(E)	4	#4	34'-4"	
e10(E)	4	#8	35'-10"	
e11(E)	4	#8	17'-11"	
e12(E)	4	#8	15'-5"	
e13(E)	7	#4	7'-9"	
e14(E)	7	#4	13'-4"	
x(E)	48	#5	5'-0"	
x1(E)	108	#4	4'-4"	
Reinforcement Bars, Epoxy Coated		Pound	91,530	
Concrete Superstructure		Cu. Yds.	417.8	
Conduit Embedded in Structure 2", PVC		Feet	333	

Bars indicated thus 1 x 4-#8 etc. indicates 1 line of bars with 4 lengths per line.
Reinforcement bars designated (E) shall be epoxy coated.
For Details of x(E) and x1(E) bars see sheet 12 of 33.

SUPERSTRUCTURE DETAILS
STRUCTURE NO. 101-0123

DESIGNED	PRD
CHECKED	KPS
DRAWN	PRD
CHECKED	KPS

rjngroup
Excellence through Ownership
200 West Front Street
Wheaton, IL 60187
PH. 630.682.4700

SHEET NO. 8 OF 33 SHEETS	F.A.P. & F.A.U. RTE. & RTE.	SECTION	COUNTY	TOTAL SHEETS	SHEET NO.
	303 5146	1-HBR & 1-2HB-D	WINNEBAGO	216	124
FED. ROAD DIST. NO. 2 ILLINOIS FED. AID PROJECT			CONTRACT NO. 64B79		