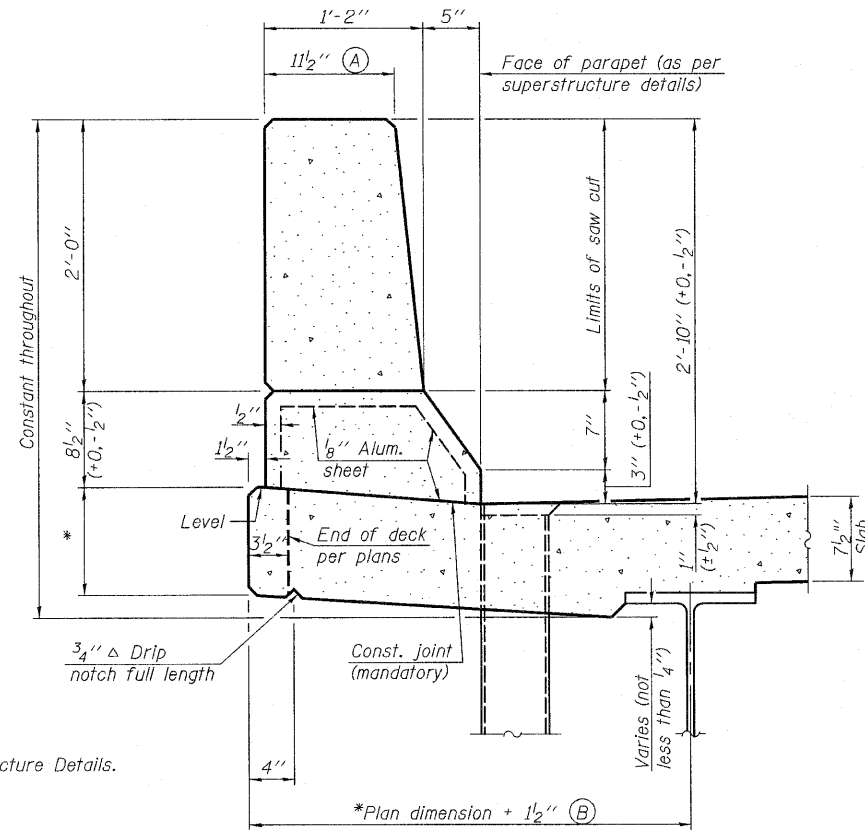
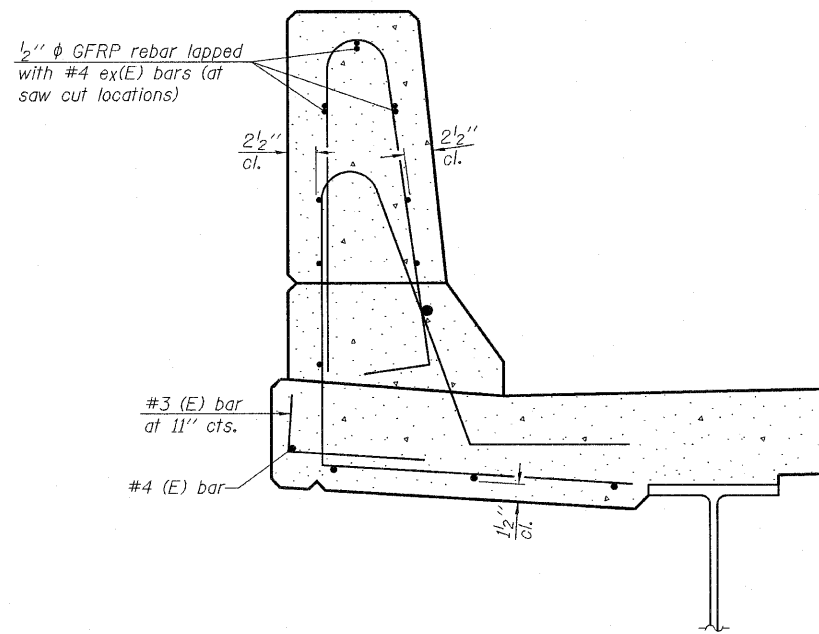


STATE OF ILLINOIS
DEPARTMENT OF TRANSPORTATION



SECTION
(Showing dimensions)



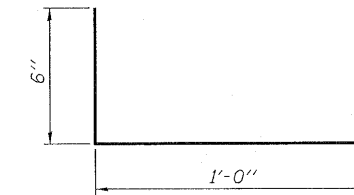
SECTION
(Showing reinforcement clearances for slip forming and additional reinforcement bars)

GENERAL NOTES

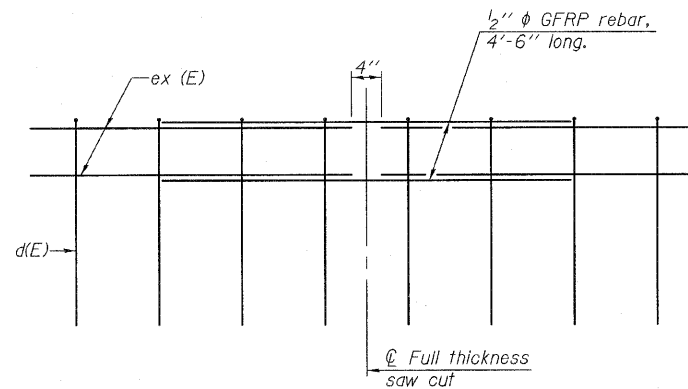
All dimensions shall remain the same as shown on superstructure details, except dimensions A and B which are to be revised as shown to provide additional clearance. Additional concrete needed to revise dimension A and B = 0.0165 cu. yds./ft. of parapet.

Place aluminum sheet in curb portion at and near piers. Full thickness saw cut at all joint locations in lieu of cork joint filler.

Steel superstructure shown. Other superstructure types similar.



#3 (E) BAR



GFRP REBAR STIFFENING DETAIL

(Place as shown in parapet section at each parapet joint location.)

DESIGNED PRD
CHECKED KPS
DRAWN PRD
CHECKED KPS

SFP-34

11-1-09

rjngroup
Excellence through Ownership
200 West Front Street
Wheaton, IL 60187
PH. 630.682.4700

SHEET NO. 11 OF 33 SHEETS	F.A.P. & F.A.U. RTE. & RTE.	SECTION	COUNTY	TOTAL SHEETS	SHEET NO.
	303 5146	1-HBR & 1-2HB-D	WINNEBAGO	216	127
			CONTRACT NO. 64B79		
FED. ROAD DIST. NO. 2 ILLINOIS FED. AID PROJECT					

**CONCRETE PARAPET
SLIPFORMING OPTION
STRUCTURE NO. 101-0123**