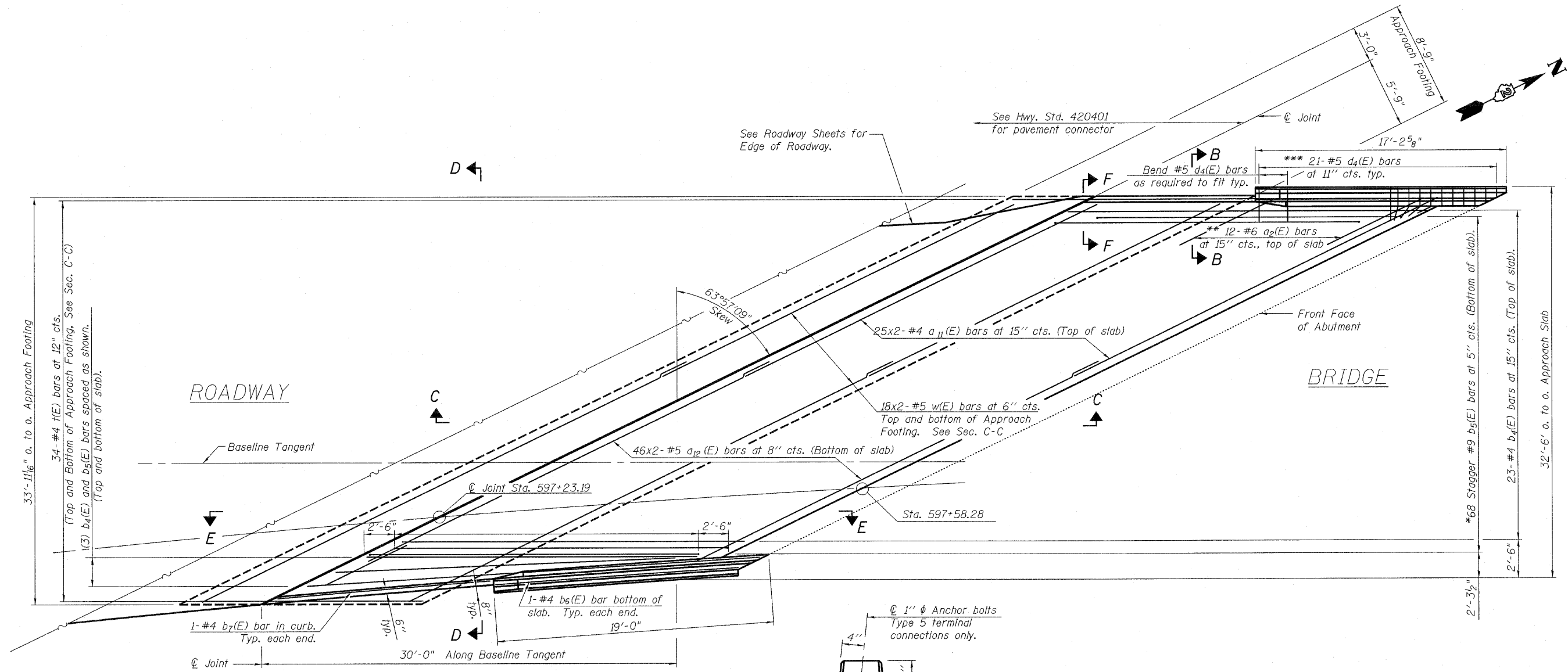
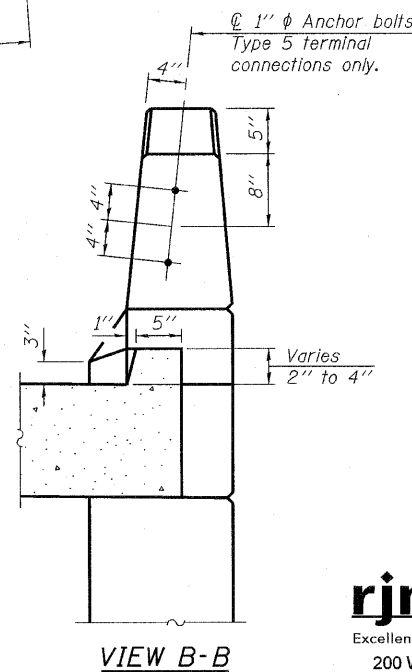


STATE OF ILLINOIS
DEPARTMENT OF TRANSPORTATION



PLAN

- * Tilt #9 b₅(E) bars as required to maintain clearance.
- ** Space between a₁₁(E) bars, typ. each parapet.
- *** Field bend front horiz. leg of d₄(E) bars to accommodate skew.



VIEW B-B

MIN. BAR LAP

- # 4 Bars = 2'-1"
- # 5 Bars = 2'-7"

Notes:
See sheet 15 of 33 for Sections C-C & D-D and View E-E.
a₁₁(E) and a₁₂(E) bar spacings measured along \mathcal{C} of Roadway.

SOUTH APPROACH SLAB
STRUCTURE NO. 101-0123

DESIGNED	PRD
CHECKED	MCB
DRAWN	PRD
CHECKED	MCB

rjngroup
Excellence through Ownership
200 West Front Street
Wheaton, IL 60187
PH. 630.682.4700

SHEET NO. 13 OF 33 SHEETS	F.A.P. & F.A.U. RTE. & RTE.	SECTION	COUNTY	TOTAL SHEETS	SHEET NO.
	303 5146	1-HBR & 1-2HB-D	WINNEBAGO	216	129
FED. ROAD DIST. NO. 2 ILLINOIS FED. AID PROJECT				CONTRACT NO. 64B79	