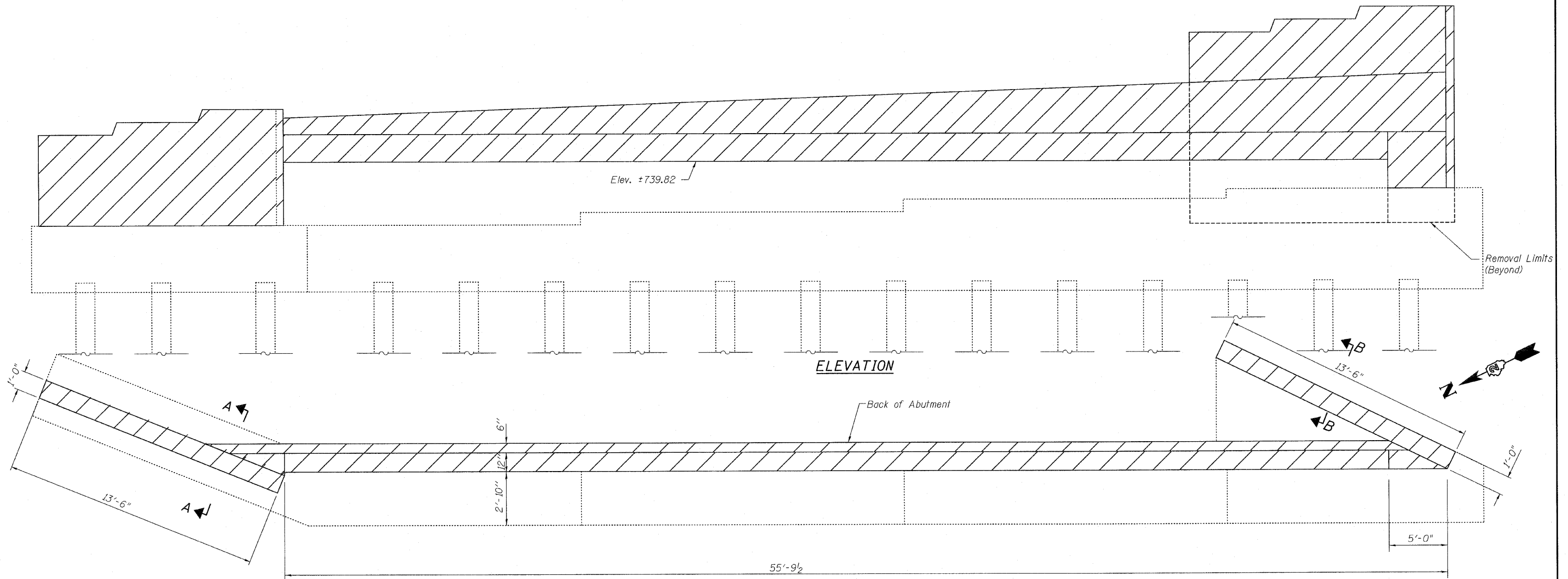


STATE OF ILLINOIS
DEPARTMENT OF TRANSPORTATION

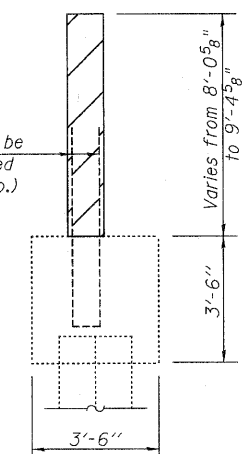


ELEVATION

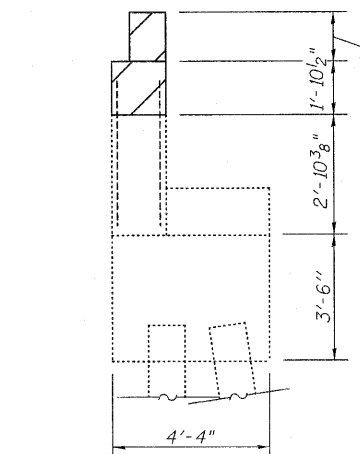
PLAN

LEGEND
 Concrete Removal

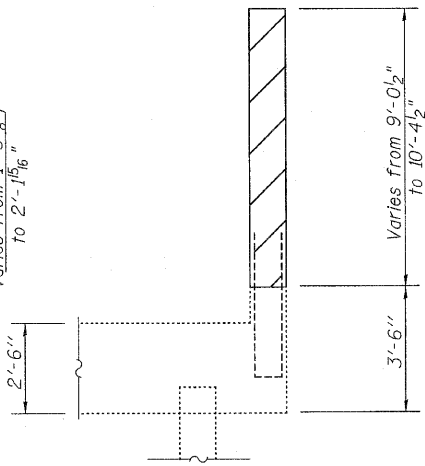
Existing Reinforcement to be cut to fit and incorporated into new construction (Typ.)



SECTION A-A



SECTION THRU ABUTMENT



SECTION B-B

NOTES

Existing reinforcement bars extending into the removal area shall be blast cleaned to gray metal and straightened. Blast cleaning and straightening shall be included with the cost of Concrete Removal.
 Existing reinforcement not extending into areas of new construction shall be cut at the removal line and removed. Cost included with Concrete Removal.
 Existing reinforcement bars which have lost more than 25% of their original diameter shall be supplemented by new epoxy coated bars of the same diameter, spliced in place. Furnishing and placing supplemental epoxy coated reinforcement bars shall be included with the cost of Reinforcement Bars, Epoxy Coated.
 Care shall be exercised by the contractor during and following removal operations to ensure that the existing rebar remaining in place are not damaged. All protruding rebar shall be cleaned, straightened, and properly positioned prior to concrete placement. Any rebar damaged during concrete removal shall be repaired or replaced using an approved Bar Splicer or Mechanical System. Cost included with Concrete Removal.

BILL OF MATERIAL

Item	Unit	Total
Concrete Removal	Cu. Yd.	19.1

**N. ABUT. REMOVAL PLAN
STRUCTURE NO. 101-0123**

DESIGNED	PRD
CHECKED	RKM
DRAWN	PRD
CHECKED	RKM

rjngroup
 Excellence through Ownership
 200 West Front Street
 Wheaton, IL 60187
 PH. 630.682.4700

SHEET NO. 25 OF 33 SHEETS	F.A.P. & F.A.U. RTE. & RTE.	SECTION	COUNTY	TOTAL SHEETS	SHEET NO.
	303 5146	1-HBR & 1-2HB-D	WINNEBAGO	216	141
	CONTRACT NO. 64B79				
FED. ROAD DIST. NO. 2 ILLINOIS FED. AID PROJECT					