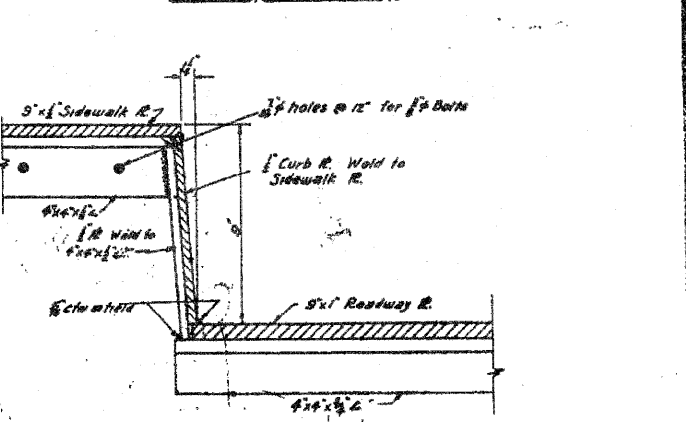
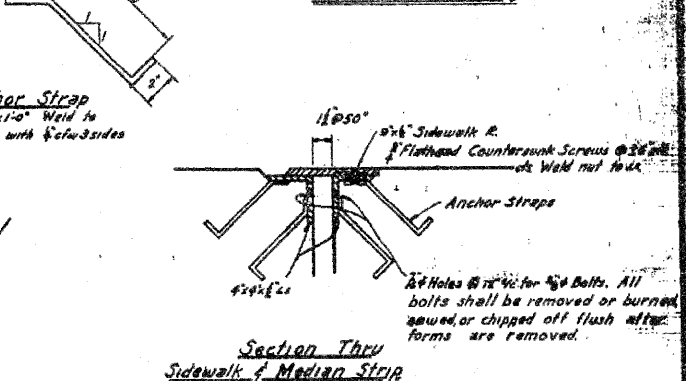
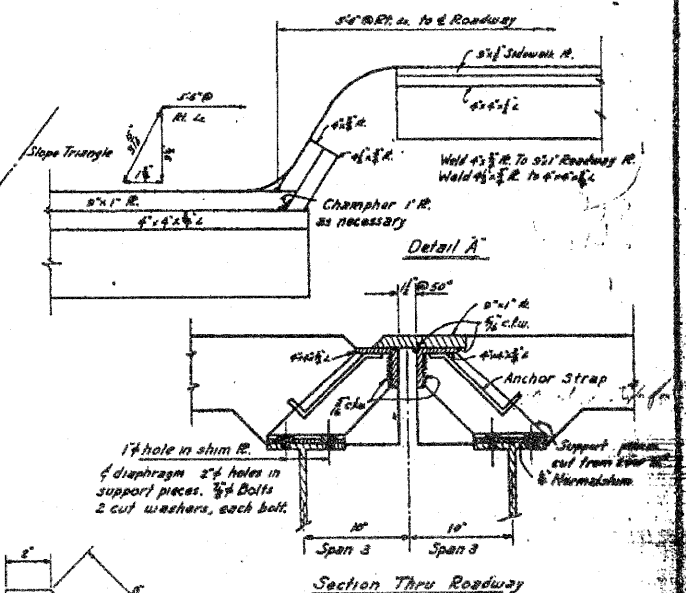
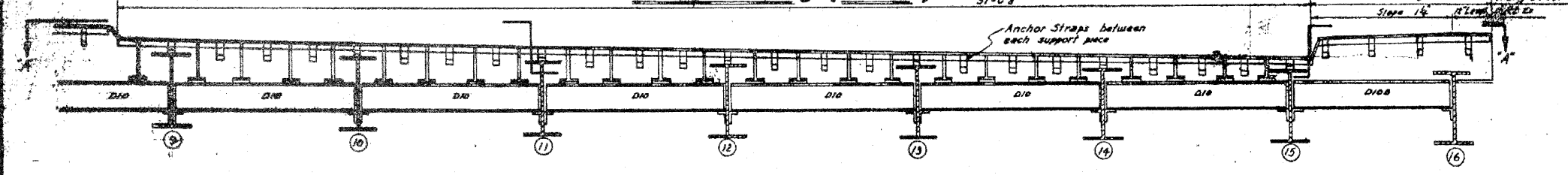
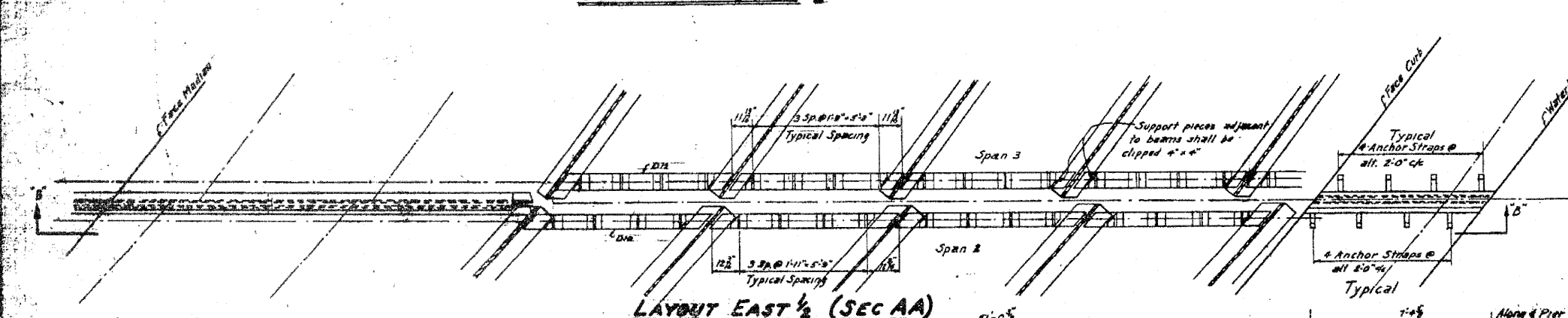
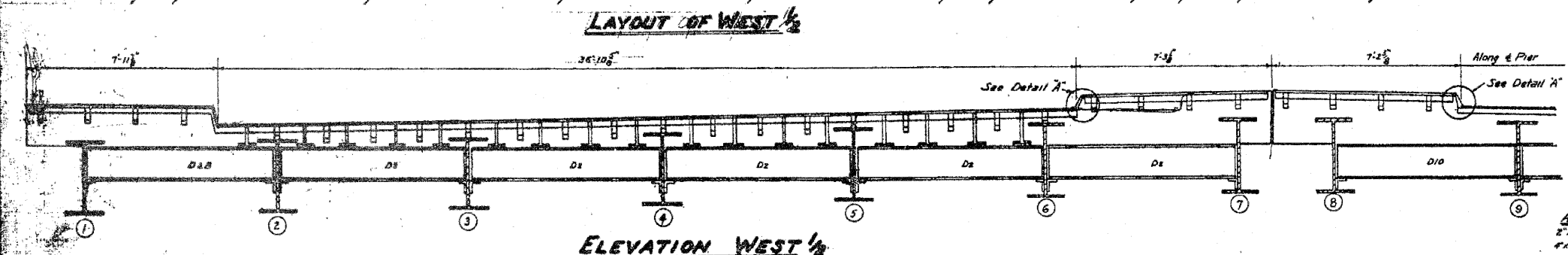
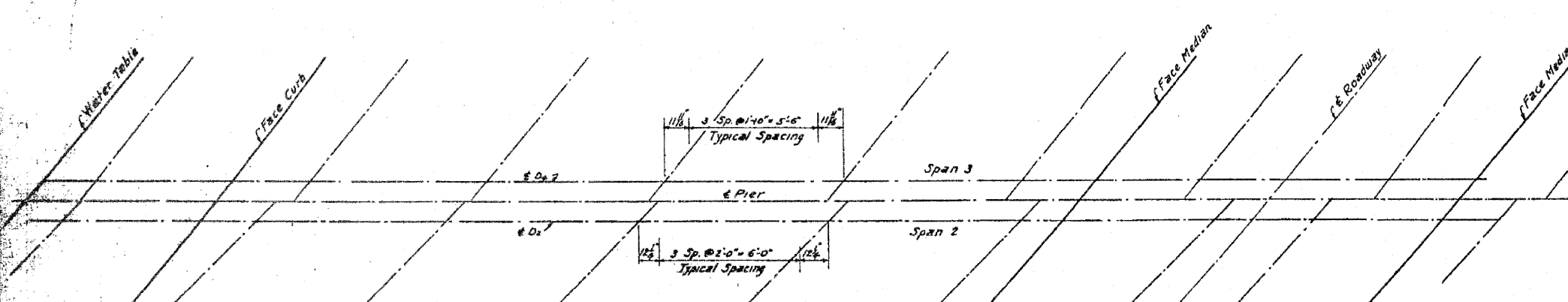


STATE OF ILLINOIS
DEPARTMENT OF PUBLIC WORKS & BUILDINGS
DIVISION OF HIGHWAYS

ROUTE NO.	SECTION	COUNTY	SHEET	OF	SHEETS
1-188	1-HB	Winnebago	38	25	18
CONTRACT NO. 64B79					



DESIGNED: George P. ...
CHECKED: ...
DRAWN: ...
APPROVED: ...
FEB. 9 1955

Roadway Expansion Device shall be assembled in the shop in proper position with the adjacent ends in place and shall be left assembled for Shop Inspection. All surfaces inaccessible after erection shall be given two shop coats of red lead paint. Anchor straps shall not be painted. In addition to 1/4" normal shim the contractor shall furnish one 1/4" and two 1/2" shims of each support piece. Shim bolted to support piece. Expansion guards are included for payment as structural steel, Est. Wt. = 1400 lbs.

ROUTE FAP 303 (IL 251) & FAU 5146 (FOREST HILLS ROAD)	SECTION 1-HB-R & 1-2-HB-D	COUNTY WINNEBAGO	SHEET 155 OF 216
CONTRACT 64B79		WINNEBAGO COUNTY STA 24+71.4	

INFORMATION ONLY

EXPANSION GUARD @ PIER 2
F.A. RT 188 SEC 1-HB-F
WINNEBAGO COUNTY
STA 24+71.4