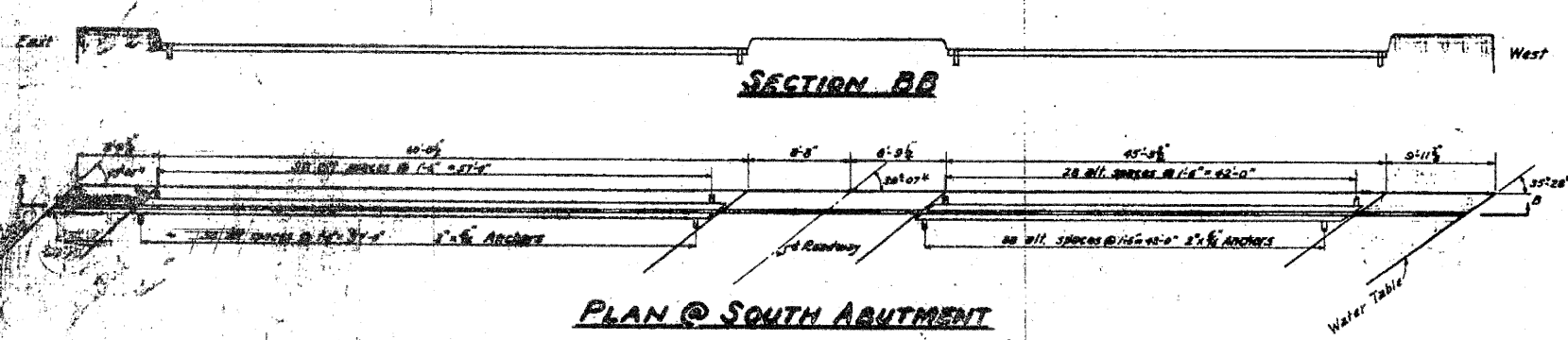
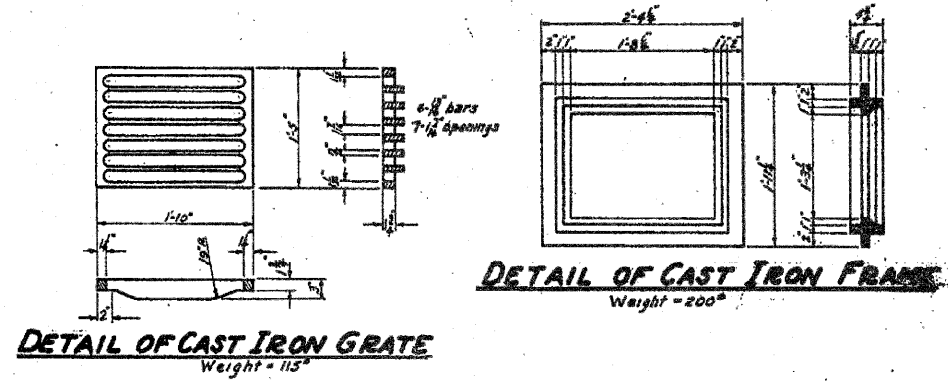


STATE OF ILLINOIS
DEPARTMENT OF PUBLIC WORKS & BUILDINGS
DIVISION OF HIGHWAYS

ROUTE NO.	SECTION	COUNTY	SHEET NO.	SHEET TOTAL	SHEET NO.
188	1-HB-D	Winnebago	38	26	112 SHEETS
PROJECT NO. 11-276(C)					

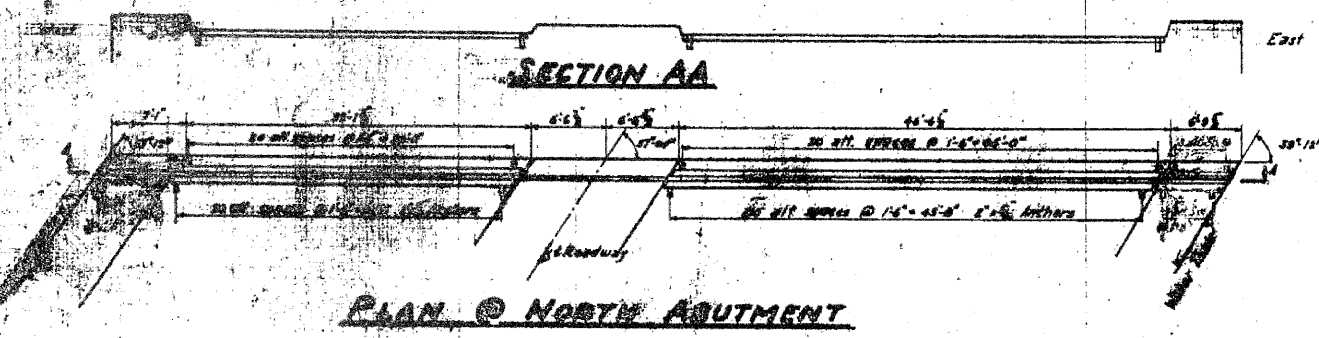


PLAN @ SOUTH ABUTMENT

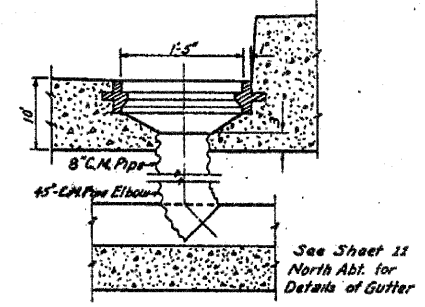


DETAIL OF CAST IRON GRATE
Weight = 115

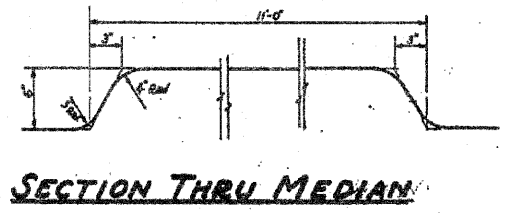
DETAIL OF CAST IRON FRAME
Weight = 200



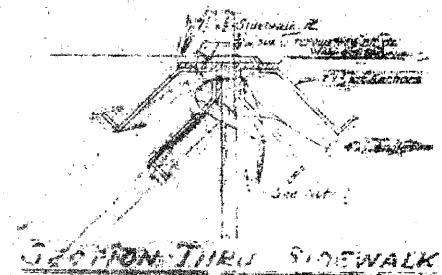
PLAN @ NORTH ABUTMENT



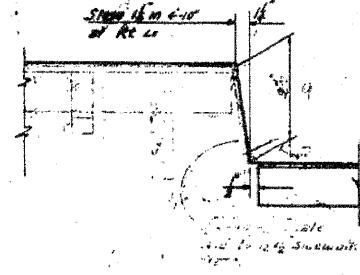
SECTION THRU FLOOR DRAIN
Cost of C.M. Pipe shall be included in cost of Cast Iron Frames



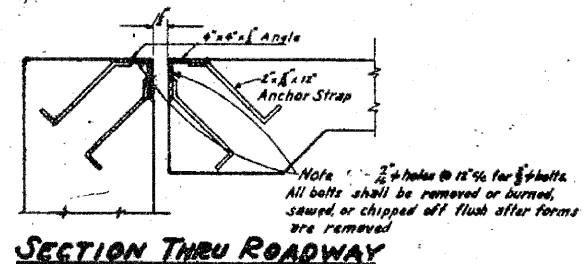
SECTION THRU MEDIAN



SECTION THRU SIDEWALK



SECTION @ SIDEWALK



SECTION THRU ROADWAY

Note:
See sheet No. 5 for detail of Anchor Straps.
*Angles given are the angles between Tangent to Curve and back of Abutment to the nearest minute.

Note: Top sidewalk shall be scum washed and only the assembly shall be attached in the street.

DESIGNED: *John P. ...*
CHECKED: *...*
EXAMINED: *...*
DATE: FEB. 9 1955
APPROVED: *...*

INFORMATION ONLY

ROUTE FAP 303 (IL 251) & FAU 5146 (FOREST HILLS ROAD)	SECTION 1-HBR & 1-2-HB-D	COUNTY WINNEBAGO	SHEET 156 OF 216
CONTRACT 64879			

EXPANSION GUARD ABTS. & DRAINAGE DETAILS
F.A. RT 188 SEC 1-HB-D
WINNEBAGO COUNTY
STA. 24+71.4