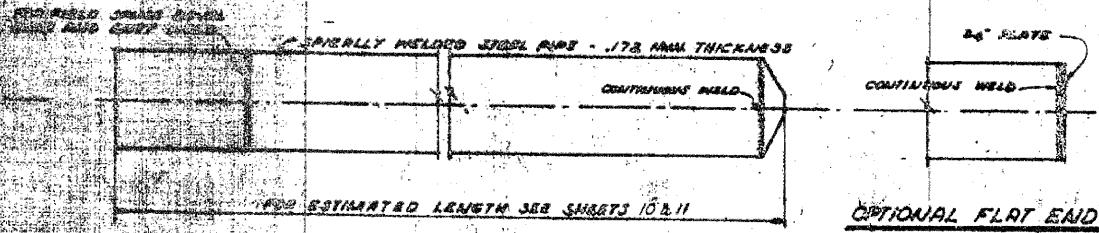


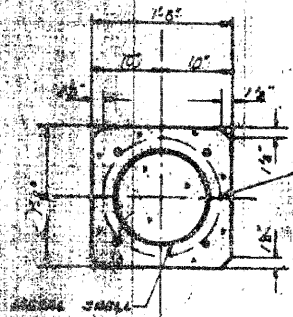
ABUTMENT PILES

NOTE: PILES TO BE USED AT THE ABUTMENTS SHALL BE ANY ONE OF THE VARIOUS PILES SHOWN BELOW.

| | | | | | |
|------------------------------------|------|-----------|------|-------|--------------|
| DESIGN NO. | DES. | COUNTY | TWP. | RANGE | SHEET NO. |
| 188 | 1-HB | WINNEBAGO | 3B | 32 | OF 12 SHEETS |
| TO STA. | | | | | |
| ALLOTTED FOR THIS PROJECT 0-716(1) | | | | | |



OPTIONAL FLAT END

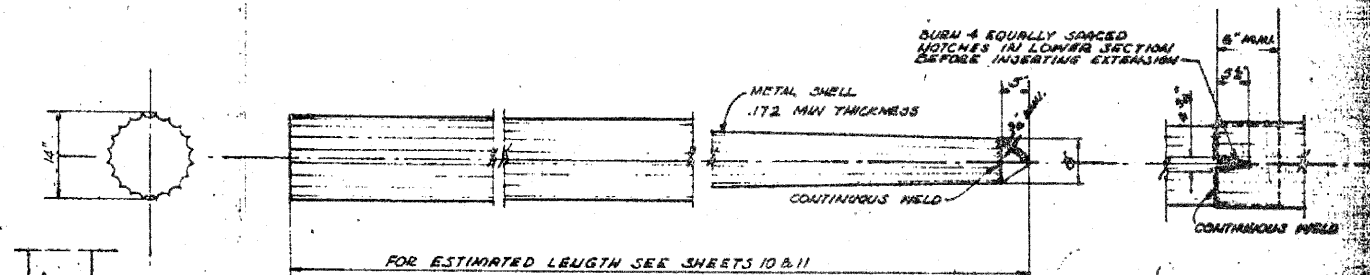


SECTION A-A

17" DIA SPIRAL #2 WIRE 6" PITCH
2 EXTRA TURNS TOP & BOTTOM
#4 TIE BARS. THE COST OF
CLASS 'X' CONCRETE ENCASEMENT
& REINFORCEMENT IS INCIDENTAL
TO THE COST OF FURNISHING PILES.

NOTE:
DRIVING AND DEBRAS-BANDS
OF PIPE SHALL BE CUT
SQUARE.

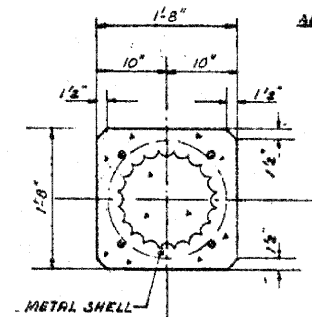
DETAIL OF SPIRALLY WELDED STEEL SHELL
FOR CAST IN PLACE CONCRETE PILES.



FOR ESTIMATED LENGTH SEE SHEETS 10 & 11

SPlice TO BE
USED AS REQUIRED

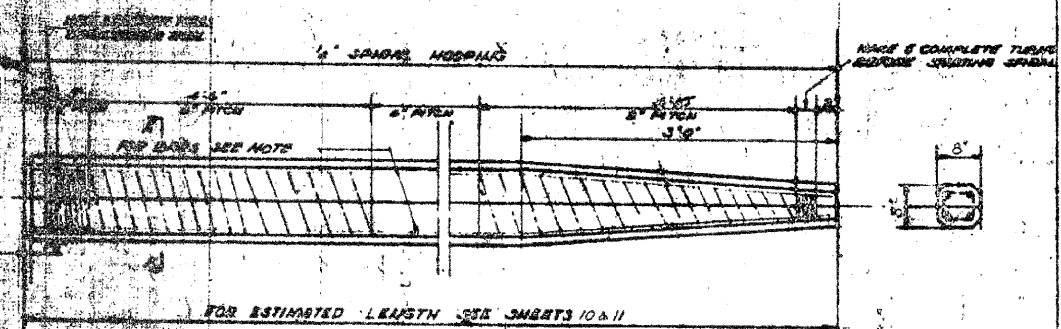
- ALLOWABLE TAPERS
- 1-TAPER 1/8" FOR 15'-14" CYLINDRICAL SECTION EXTENSION
 - 2-TAPER 1/4" FOR 25'-14" CYLINDRICAL SECTION EXTENSION
 - 3-TAPER 1/2" FOR 40'-14" CYLINDRICAL SECTION EXTENSION



SECTION A-A

17" DIA SPIRAL #2 WIRE 6" PITCH
2 EXTRA TURNS TOP & BOTTOM
#4 TIE BARS. THE COST OF
CLASS 'X' CONCRETE ENCASEMENT
AND REINFORCEMENT IS INCIDENTAL
TO THE COST OF FURNISHING PILES.

DETAIL OF METAL SHELL FOR
CAST IN PLACE CONCRETE PILES



FOR ESTIMATED LENGTH SEE SHEETS 10 & 11

NOTE: ALL PILES TO BE USED AT THE ABUTMENTS SHALL BE ANY ONE OF THE VARIOUS PILES SHOWN BELOW.

DETAIL OF PRECAST CONCRETE PILES

INFORMATION ONLY

PILE DETAILS

| | | | |
|---|--------------------------------|---------------------|---------------------|
| ROUTE FAP 303 (IL 251) & FAU 5146 (FOREST HILLS ROAD) | SECTION 1-HBR & 1-2-HB-D | COUNTY WINNEBAGO | SHEET 159 OF 216 |
| CONTRACT 64B79 | | | |

GRADE SEPARATION
F.A. ROUTE 188 OVER SPRING CREEK RD.
F.A. ROUTE 188 - SECTION 1-HB
WINNEBAGO COUNTY
STATION 24+71.4