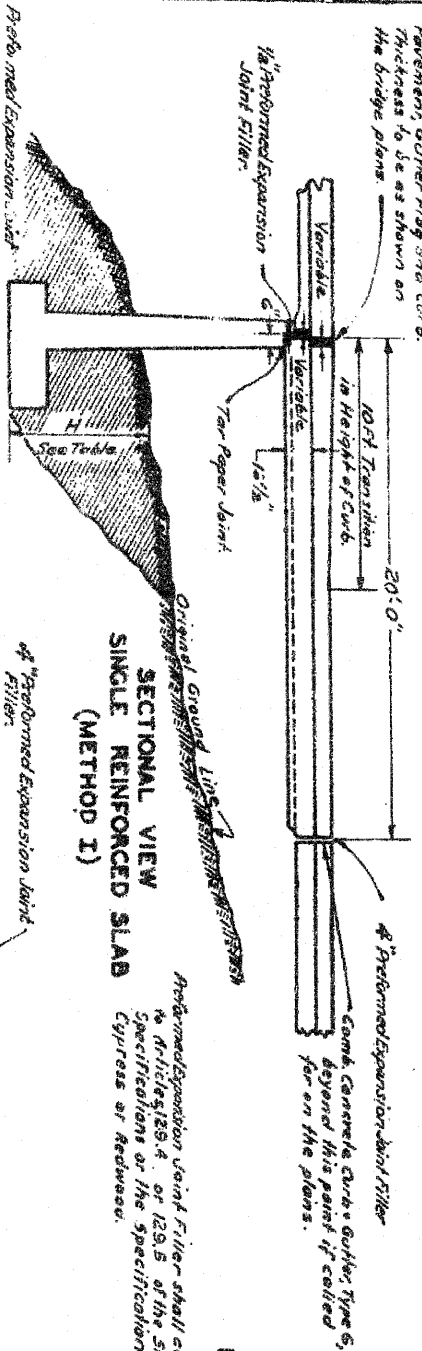


DETAILS OF BRIDGE APPROACHES USING COMBINATION CONCRETE CURB AND GUTTER TYPE 6

Performed Expansion Joint Filler in
Pavement, Gutter Flap and Curb.
Thickness to be as shown on
the bridge plans.



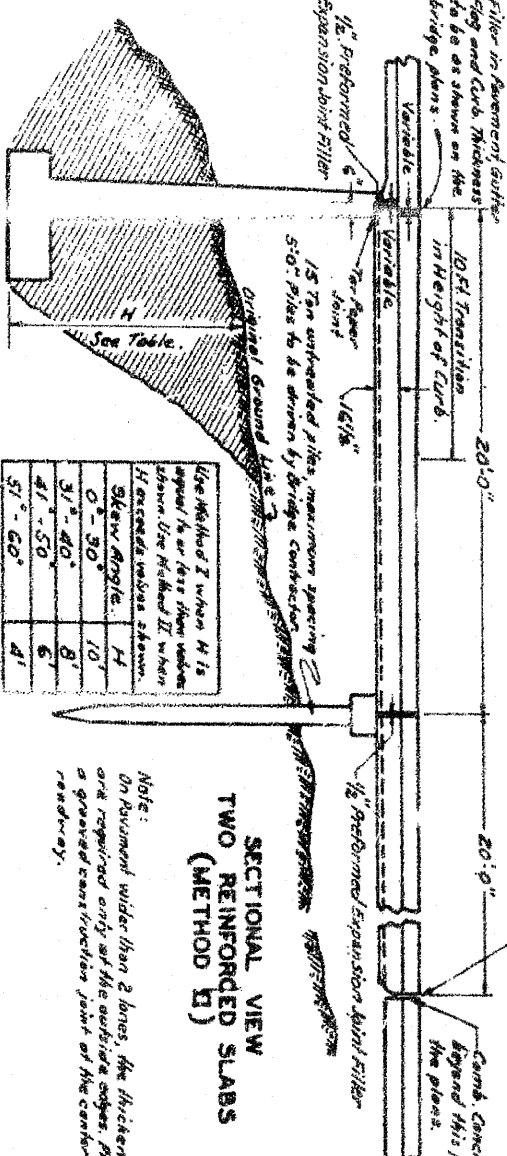
**SECTIONAL VIEW
SINGLE REINFORCED SLAB
(METHOD I)**

Performed Expansion Joint Filler shall conform to Articles 129.4. or 129.5 of the Standard Specifications or the Specifications for Cylinders or Reverse.

Cylinder shall be filled with
sand and clay shall be tamped.



DETAIL OF MUD JACK CYLINDER
Cylinders shall be Stan
Weight Black Steel Pipe

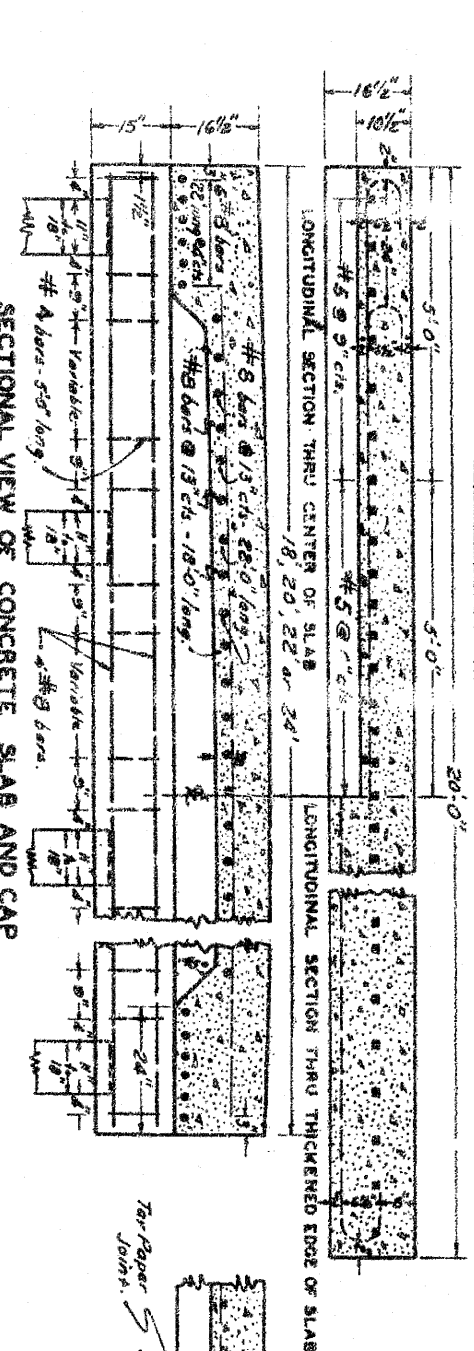
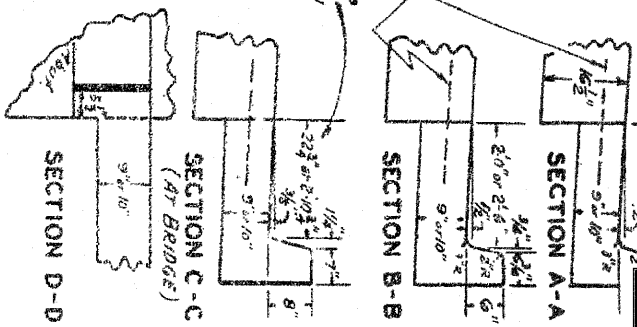


**SECTIONAL VIEW
TWO REINFORCED SLABS
(METHOD II)**

Note:
On pavement wider than 2 lanes, the thickened edges
are required only at the outside edges. Provide
a graded construction joint at the center of the
roadway.

This dimension increases
when the 20 ft transition
curb and gutter is constructed
only on the low side of the
pavement.

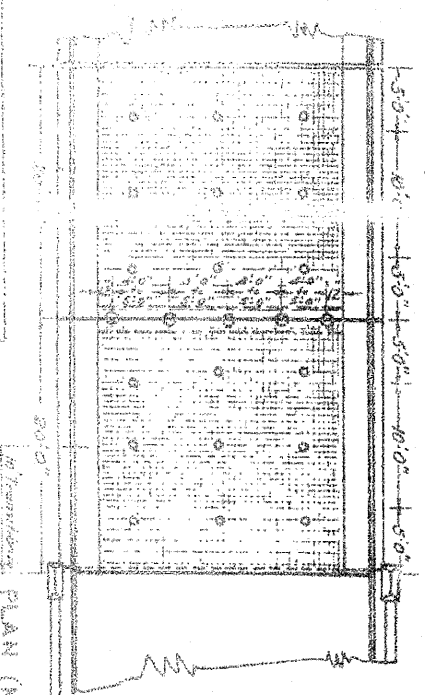
Use Method I when H is equal to or less than shown. H exceeds values shown.	H	Skew Angle
	0'-30"	10°
	3'-40"	8°
	4'-50"	6°
	5'-60"	4°



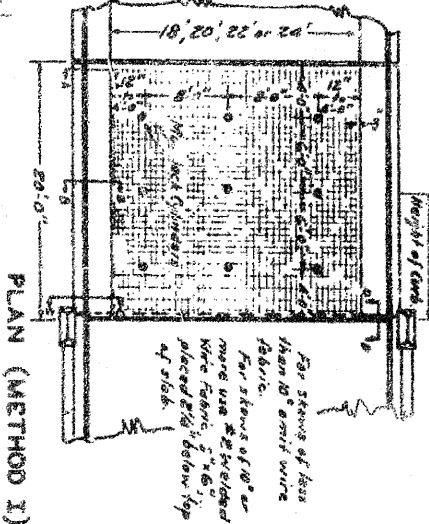
SECTIONAL VIEW OF CONCRETE SLAB AND CAP

Where the roadway width of the bridge exceeds the width of the approach pavement by more than 6 ft, the Type 6 Curb and Gutter may be omitted except where the pavement slopes in one direction only, in which case the Type 6 Curb and Gutter shall be constructed only on the low side of the roadway. The cross section of the curb and gutter of the bridge shall be transformed uniformly to the cross section shown in Section A-A by a 20 ft transition curb. Where the Type 6 Curb and Gutter is omitted, the earth shoulders shall be shaped up uniformly to a height of 2 inches above the edge of the pavement and this shoulder shall extend approximately 18 ft back of the bridge and taper to another 18 ft to the standard shoulder.

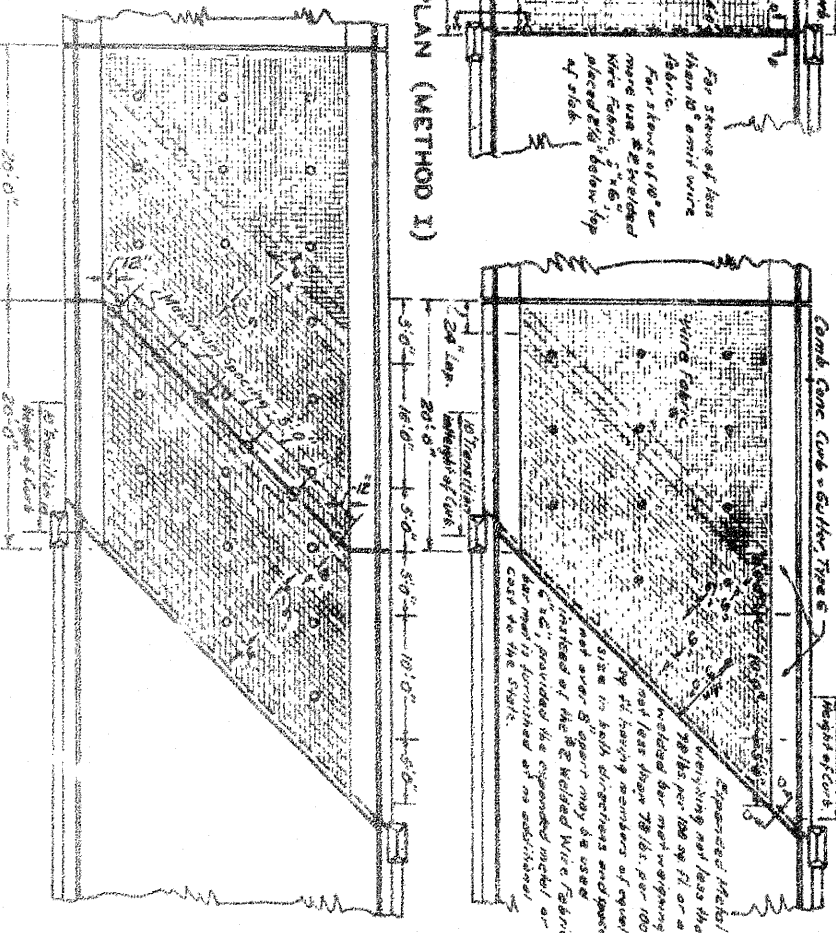
The Performed Expansion Joint Filler shall be included in the general contract price for P.C. CONCRETE PAVEMENT (SEE SPEC. 101.01) and COMBINATION CONCRETE CURBS, GUTTERS, TYPES 6 and 3 shall conform to R.M. 129.4 & 129.5 of the Standard Specifications.



PLAN (METHOD II)



PLAN (METHOD I)



The price for the concrete curb and gutter shall be paid for at the contract unit price for P.C. CONCRETE PAVEMENT (SEE SPEC. 101.01) and COMBINATION CONCRETE CURBS, GUTTERS, TYPES 6 and 3 shall conform to R.M. 129.4 & 129.5 of the Standard Specifications.

The price for the concrete curb and gutter shall be paid for at the contract unit price for P.C. CONCRETE PAVEMENT (SEE SPEC. 101.01) and COMBINATION CONCRETE CURBS, GUTTERS, TYPES 6 and 3 shall conform to R.M. 129.4 & 129.5 of the Standard Specifications.

STANDARD 1909R

ROUTE FAP 303 (IL 251) & FAU 5146 (FOREST HILLS ROAD)	SECTION 1-HBR & 1-2-HB-D	COUNTY WINNEBAGO CONTRACT 64B79	SHEET 160 OF 216
---	--------------------------------	--	---------------------