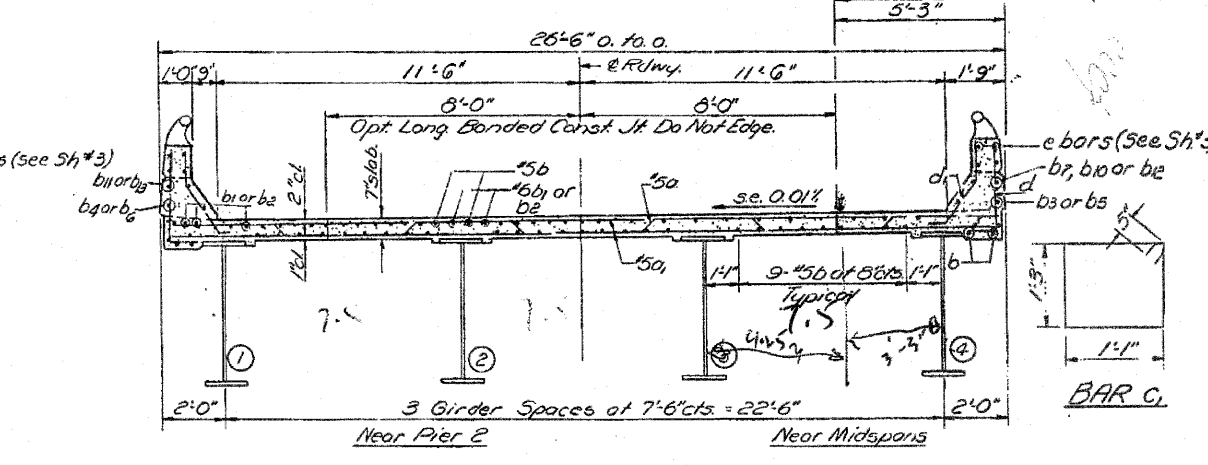
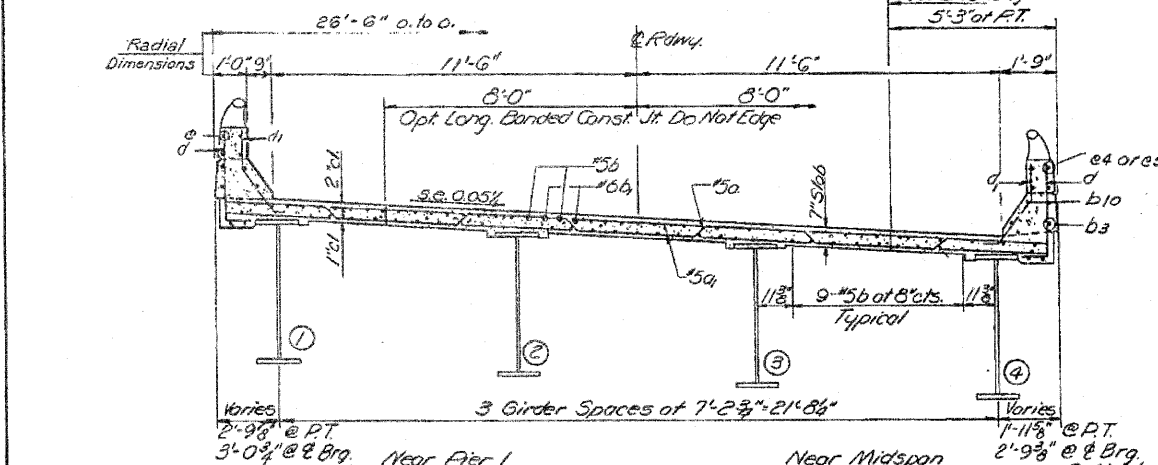
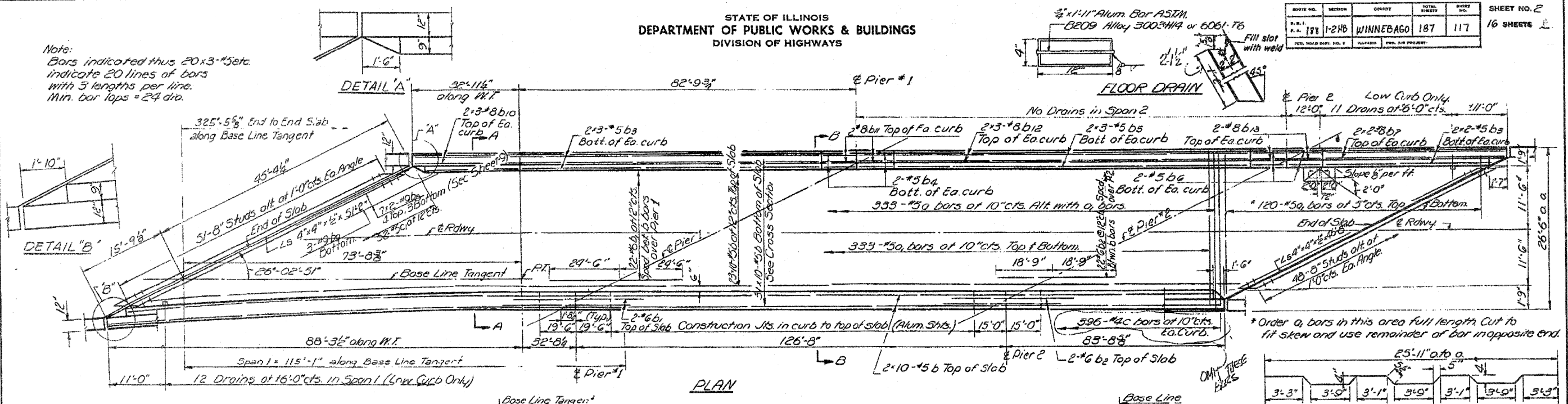


STATE OF ILLINOIS  
DEPARTMENT OF PUBLIC WORKS & BUILDINGS  
DIVISION OF HIGHWAYS

ROUTE NO.	SECTION	COUNTY	TOTAL SHEETS	SHEET NO.
1-218	1-218	WINNEBAGO	187	117

SHEET NO. 2  
16 SHEETS

Note:  
Bars indicated thus 20x3-5 etc.  
indicate 20 lines of bars  
with 3 lengths per line.  
Min. bar laps = 24 dia.

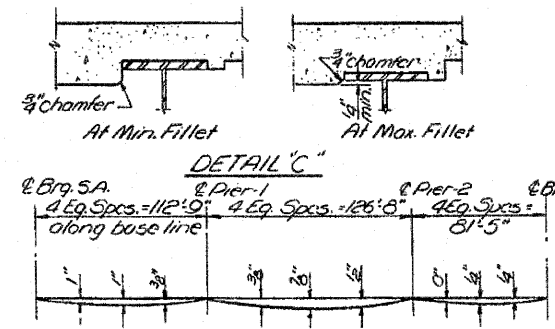
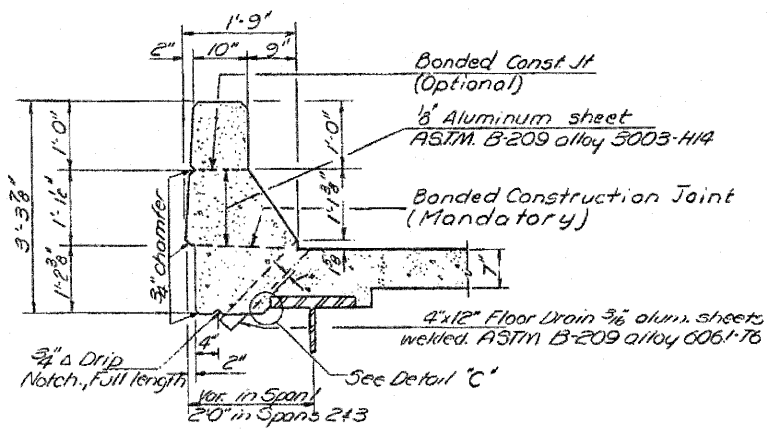


**BILL OF MATERIALS**

BAR	NO.	SIZE	LENGTH	SHAPE
a	333	#5	26'-8"	~
a	906	#5	25'-11"	~
b1e	12	#8	32'-9"	~
b1c	8	#8	14'-9"	~
b	380	#5	34'-0"	~
b	26	#6	40'-0"	~
b2	26	#6	37'-6"	~
b2	20	#5	36'-0"	~
b2	8	#5	19'-3"	~
b2	12	#5	32'-0"	~
b2	8	#5	14'-9"	~
b2	8	#8	36'-6"	~
b2	28	#9	26'-0"	~
b2	6	#9	16'-0"	~
b10	12	#8	35'-9"	~
b11	8	#8	19'-3"	~
d	638	#4	3'-10"	L
d	638	#5	3'-3"	L
c1	104	#5	5'-6"	U
e	20	#5	19'-0"	~
e	16	#5	19'-3"	~
e2	40	#5	18'-2"	~
e2	16	#5	14'-9"	~
e2	52	#5	16'-11"	~
e2	4	#5	15'-4"	~
d2	3	#6	3'-10"	L
d2	4	#6	9'-3"	L
Class X Concrete				Cu. Yds. 293.2
Reinforcement Bars				Lbs. 73010

**STANDARD FILLET DETAIL**

To determine  $f'$ : After all Structural Steel has been erected, elevations of the top flanges of the Girders shall be taken at intervals shown on Sheet 415. These elevations, subtracted from the 'Grade Elevations adjusted for Dead Load Deflections' shown on sheet 415, minus slab thickness, equals the fillet heights  $f'$  above top of Girders.



**DEAD LOAD DEFLECTION DIAGRAM**

(Includes weight of concrete only)  
Note: The above deflections are not to be used in the field if the engineer is working from the grade elevations adjusted for dead load deflections as shown on sheet 415.

Note:  
For placement of dia bars see sheet 3

DESIGNED	APPROVED
CHECKED	PASSED
DRAWN	APPROVED
CHECKED	

ROUTE	SECTION	COUNTY	SHEET
FAP 303 (IL 251) & FAU 5146 (FOREST HILLS ROAD)	1-HBR & 1-2-H-B-D	WINNEBAGO	162 OF 216

**SUPERSTRUCTURE**  
FAP 188 SEC. 1-2 HB  
WINNEBAGO COUNTY  
STA. 688+32.18

**INFORMATION ONLY**