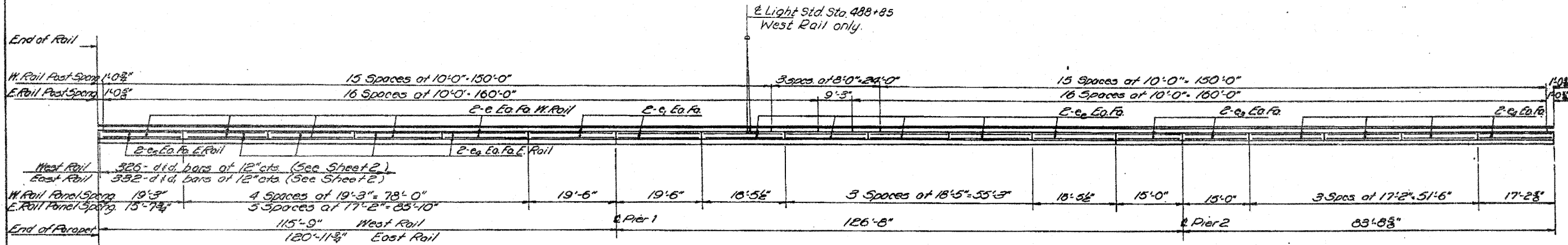


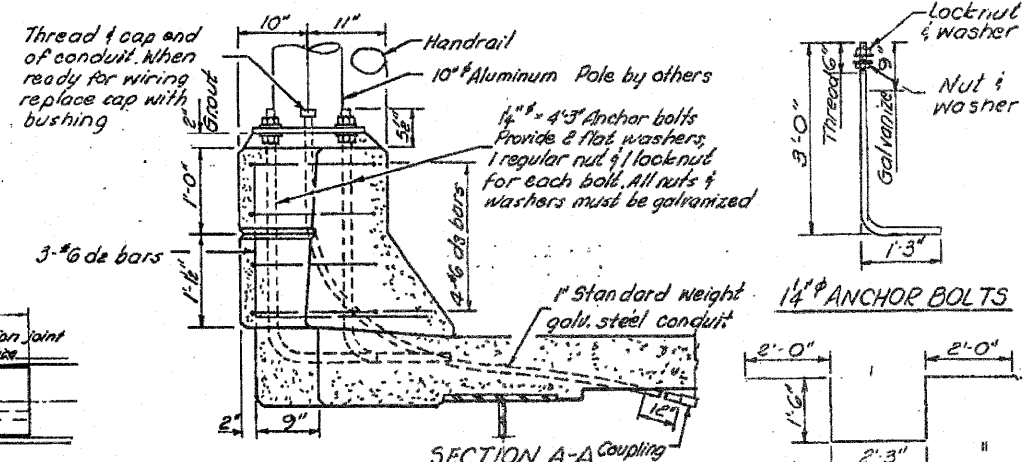
STATE OF ILLINOIS
DEPARTMENT OF PUBLIC WORKS & BUILDINGS
DIVISION OF HIGHWAYS

ROUTE NO.	SECTION	COUNTY	TOTAL SHEETS	SHEET NO.	SHEETS
188	1-2HB	WINNEBAGO	187	115	16

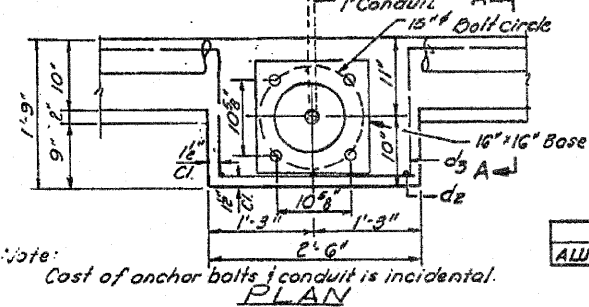
SHEET NO. 3
16 SHEETS



ELEVATION
(All measurements along & of rail)



Note: Grout mixture shall consist of 1 part sand, 1 part cement & 1 parts chips (pea gravel). The grout shall contain water for 1' slump.



Note: Cost of anchor bolts & conduit is incidental.

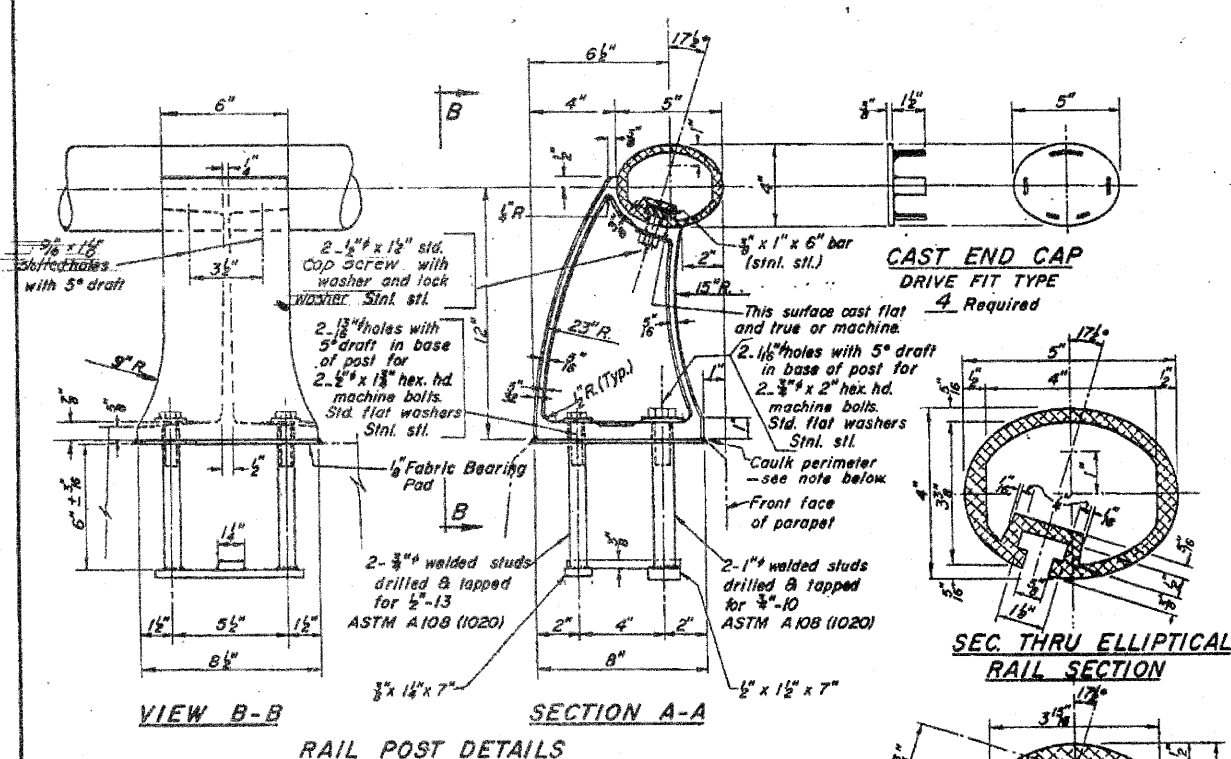
BILL OF MATERIAL

Item	Unit	Quantity
ALUMINUM HANDRAIL	Lin. Ft.	657

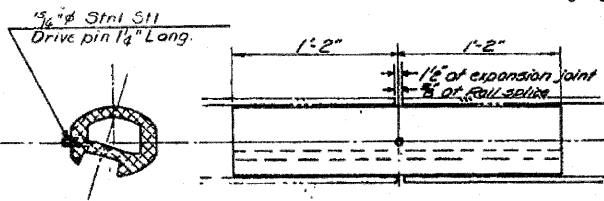
The lengths and quantities of handrail, reinforcement and Class X Concrete in parapets are included in superstructure quantities. See Sheet 2.

ALUMINUM HANDRAIL
F.A.R.T.E. 188 SEC. 1-2HB
WINNEBAGO COUNTY
STA. 688 + 32.18

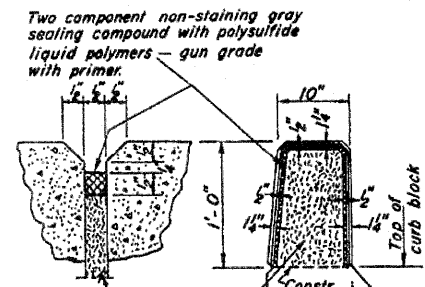
INFORMATION ONLY



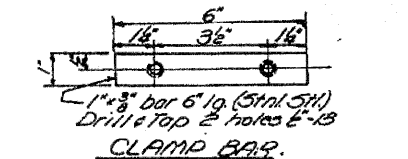
RAIL POST DETAILS



RAIL SPLICE
Notch top of slot in rails to clear 1/8" screw.



PARAPET JOINT DETAIL



SEC. THRU SPLICE

Note: Seal perimeter of base of post to parapet with two component non-staining gray sealing compound with polysulfide liquid polymers - gun grade with primer.

DESIGNED	W. M. Best	APPROVED	W. M. Best
CHECKED	W. M. Best	PASSED	W. M. Best
DRAWN	W. M. Best	DATE	APRIL 30 1964
CHECKED	W. M. Best		