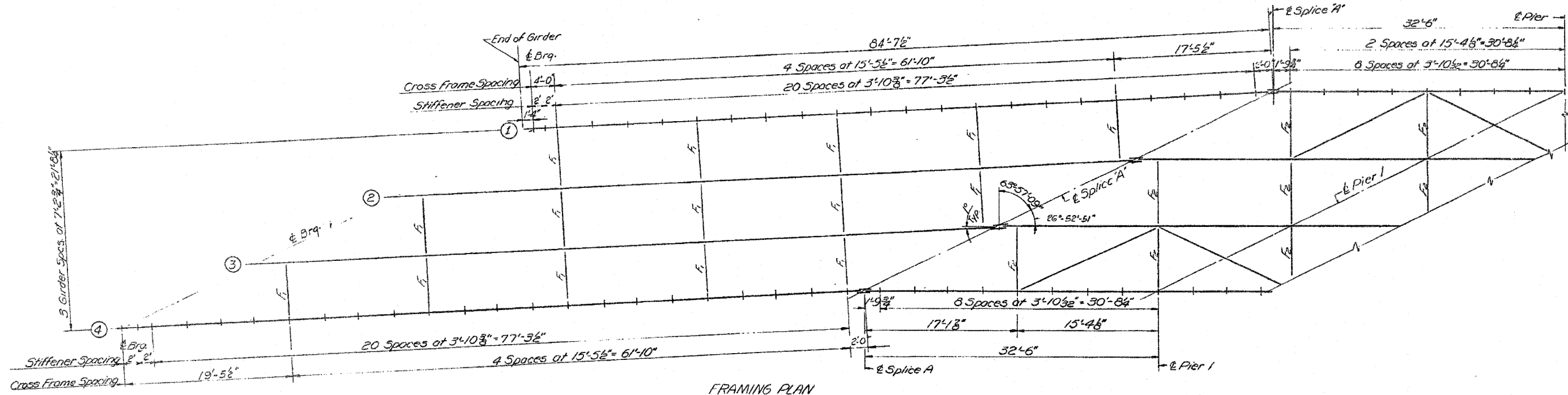
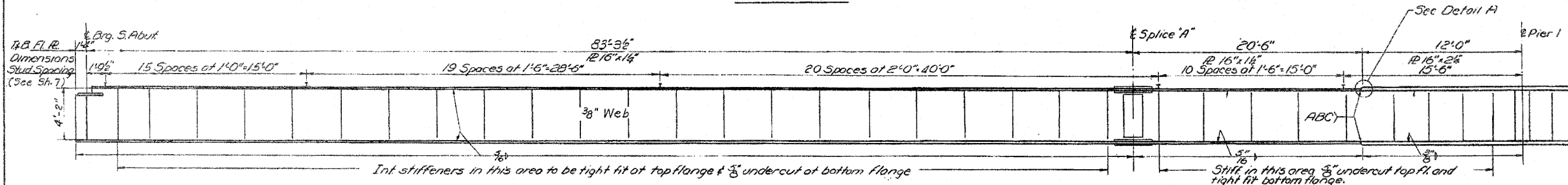


STATE OF ILLINOIS
DEPARTMENT OF PUBLIC WORKS & BUILDINGS
DIVISION OF HIGHWAYS

ROUTE NO.	SECTION	COUNTY	TOTAL SHEETS	SHEET NO.
187	1-2HB	WINNEBAGO	187	121
SHEET NO. 6				
16 SHEETS				



FRAMING PLAN



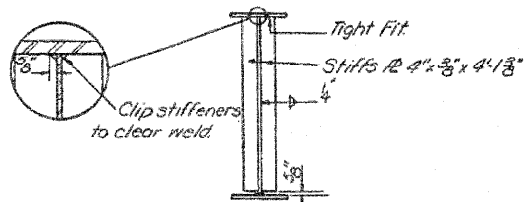
INT. GIRDER ELEVATION

Girder Web shall be cut to Camber Curve. See Sheet 7

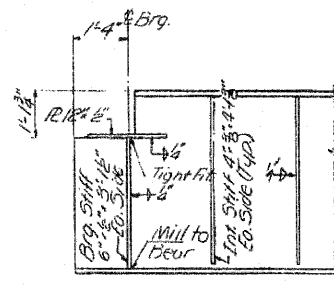
WELDING REFERENCE

- A- Butt weld groove may be of any qualified type permitted by the current AWS Specifications for Submerged Arc Welded Bridge Joints.
- B- Plate thickness transitions shall conform to Detail A.
- C- Finish to required weld conformation by grinding transversely to the welded joints.

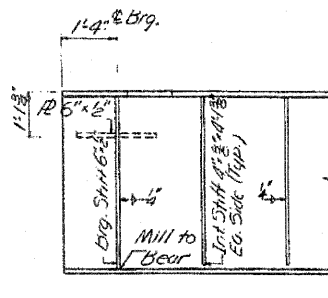
ROUTE FAP 303 (IL 251) & FAU 5146 (FOREST HILLS ROAD)	SECTION 1-HBR & 1-2HB-D	COUNTY WINNEBAGO	SHEET 186 OF 216
		CONTRACT 64879	



SECTION
SHOWING TYP INT STIFFENER
IN MID-SPANS

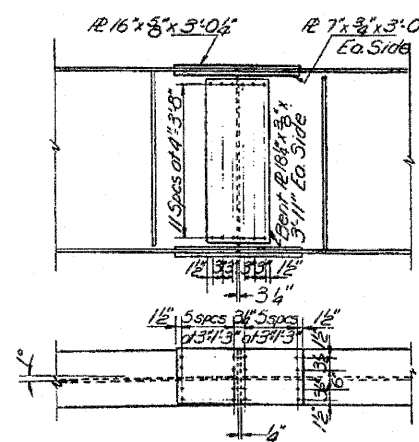


INT. GIRDER



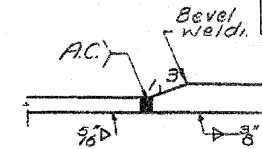
EXT. GIRDER

DETAILS AT ABUTMENTS



SPLICE "A" DETAILS

All rivets 7/8" φ



DETAIL A

DESIGNED A. Wilson	EXAMINED C. J. Hummer
CHECKED T. M. Bond	PASSED H. J. Bond
DRAWN R. Ferrando	APPROVED O. J. Bond
CHECKED T. M. Bond	

INFORMATION ONLY

SPAN 1
STRUCTURAL STEEL
F.A. RT. 198 SEC. 1-2HB
WINNEBAGO COUNTY
STA. 688+32.18