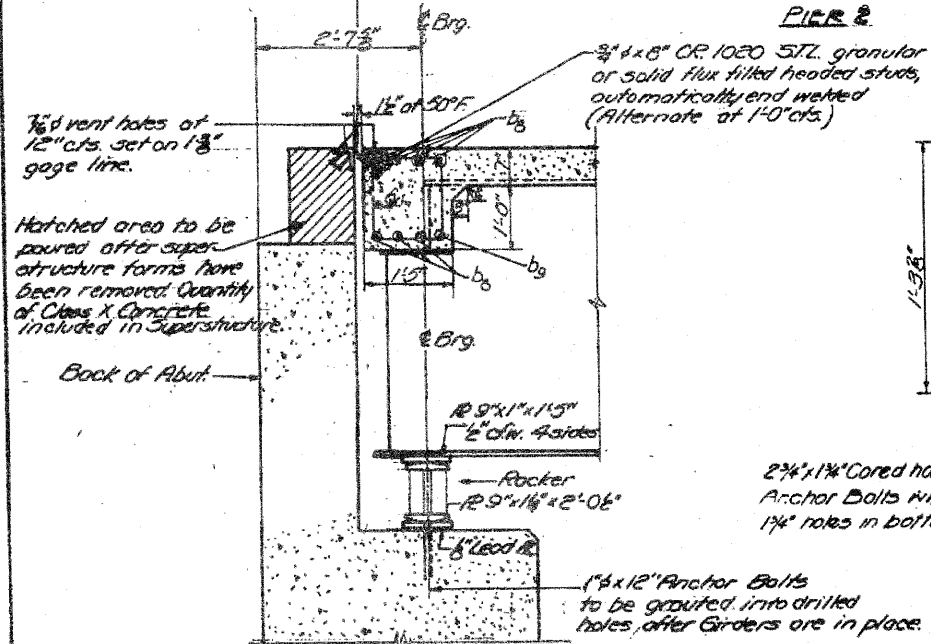


STATE OF ILLINOIS  
DEPARTMENT OF PUBLIC WORKS & BUILDINGS  
DIVISION OF HIGHWAYS

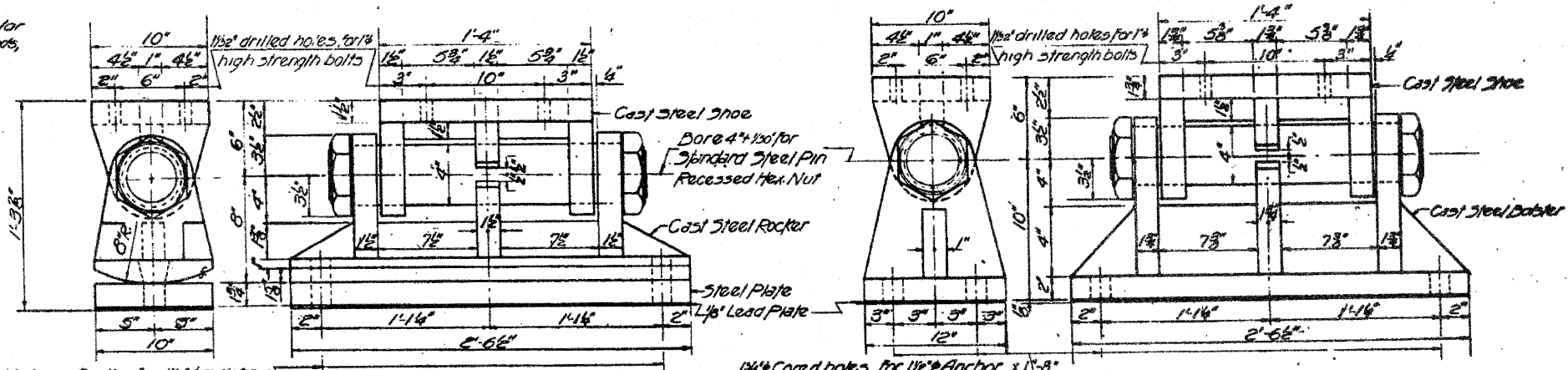
ROUTE NO.	SECTION	COUNTY	SHEET NO.	SHEET NO.
188	1-2HB	WINNEBAGO	187	124
SHEET NO. 9 16 SHEETS				

1/8" holes of 12" cts. for 3/8" bolts set on 2 1/8" gage line. All bolts shall be turned, squared, or clipped off flush with back of angles after forms are removed.

PLAN OF CORED HOLES  
PIER 2



1/4" SLIDING PLATE FOR ROCKER



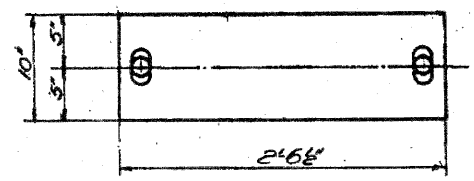
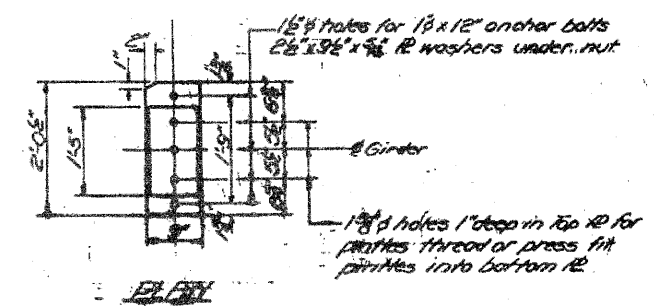
2 1/8" x 1 1/8" Cored holes in Rocker for 1 1/2" x 1 1/8" Anchor Bolts with hexagon nuts.  
1 1/8" holes in bottom plate.

BEARING DETAIL AT PIER 2  
Wt. of one Brg. assembly = 618 lbs.

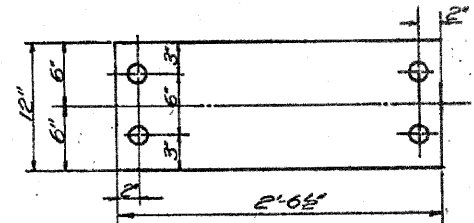
1 1/8" Cored holes for 1 1/2" Anchor x 1 1/8" Bolts with hexagon nuts.

BEARING DETAIL AT PIER 1  
Wt. of one Brg. assembly = 525 lbs.

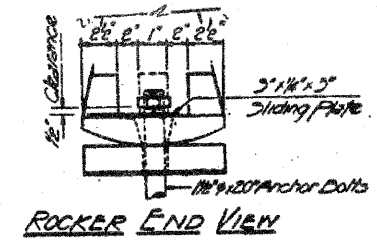
SEC. AT ABUTMENT



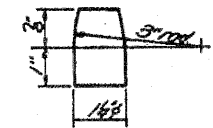
PLAN BRG. PL. PIER 2



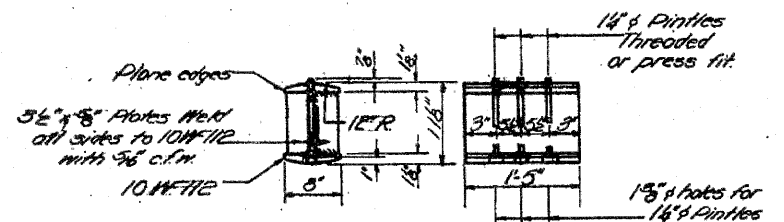
PLAN BRG. PL. PIER 1



ROCKER END VIEW



DETAIL OF PINDLE



DETAIL OF ROCKER AT ABUTMENTS  
Wt. of one Brg. assembly = 343 lbs.

APRIL 20 1966  
DESIGNED BY: [Signature]  
CHECKED BY: [Signature]  
APPROVED BY: [Signature]

ROUTE FAP 303 (IL 251) & FAU 5146 (FOREST HILLS ROAD)	SECTION 1-HBR & 1-2-HB-D	COUNTY WINNEBAGO	SHEET 169 OF 216
CONTRACT 64B79			

INFORMATION ONLY  
BEARING DETAILS  
FAU 5146 SEC. 1-2HB  
WINNEBAGO COUNTY  
STA 688+32.16