

STATE OF ILLINOIS
DEPARTMENT OF PUBLIC WORKS & BUILDINGS
DIVISION OF HIGHWAYS

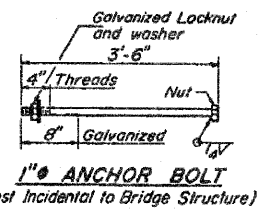
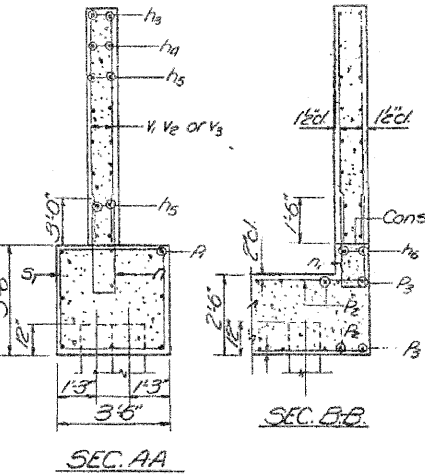
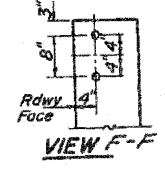
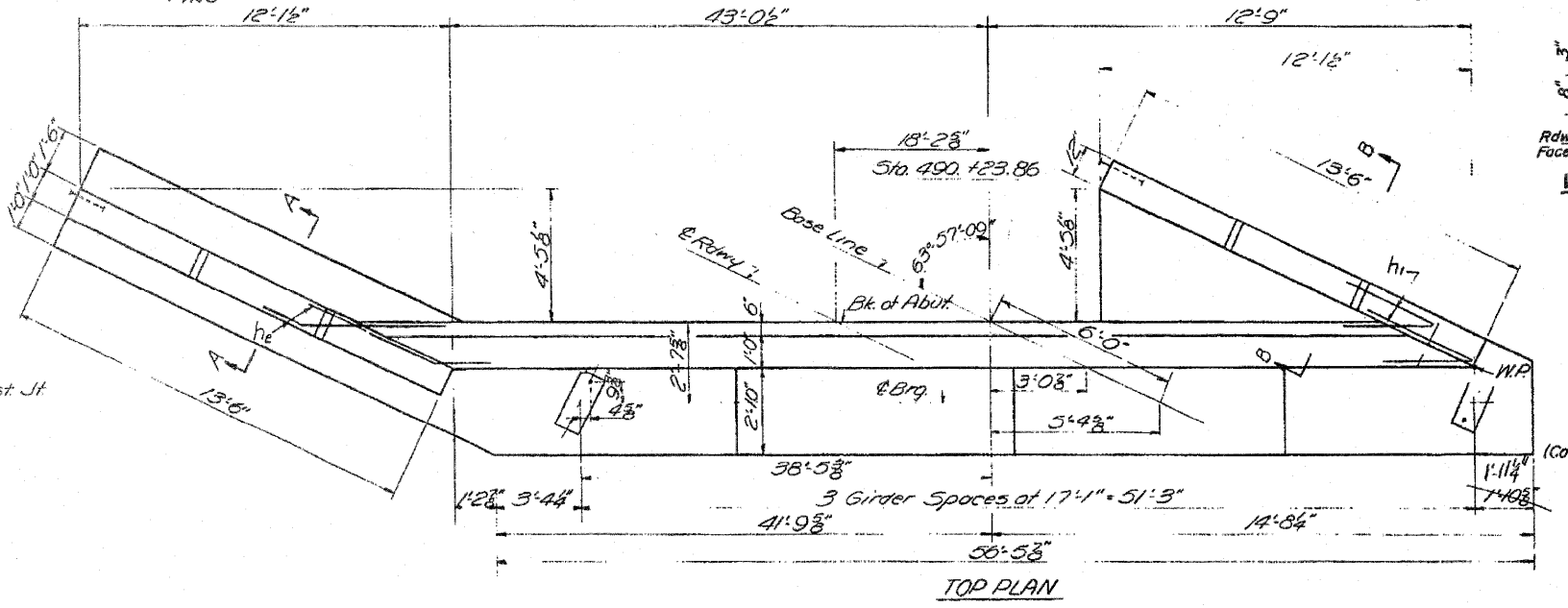
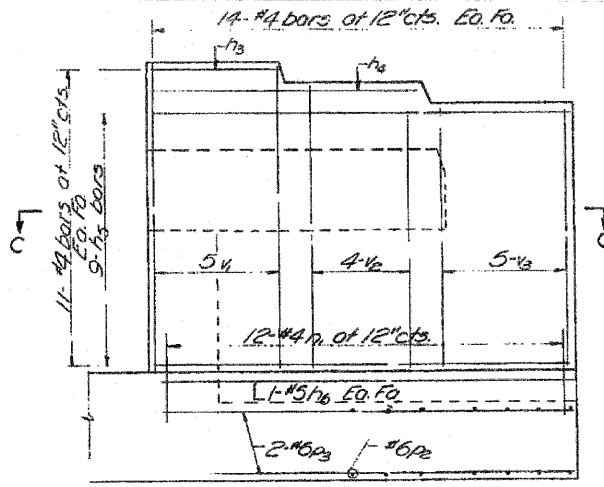
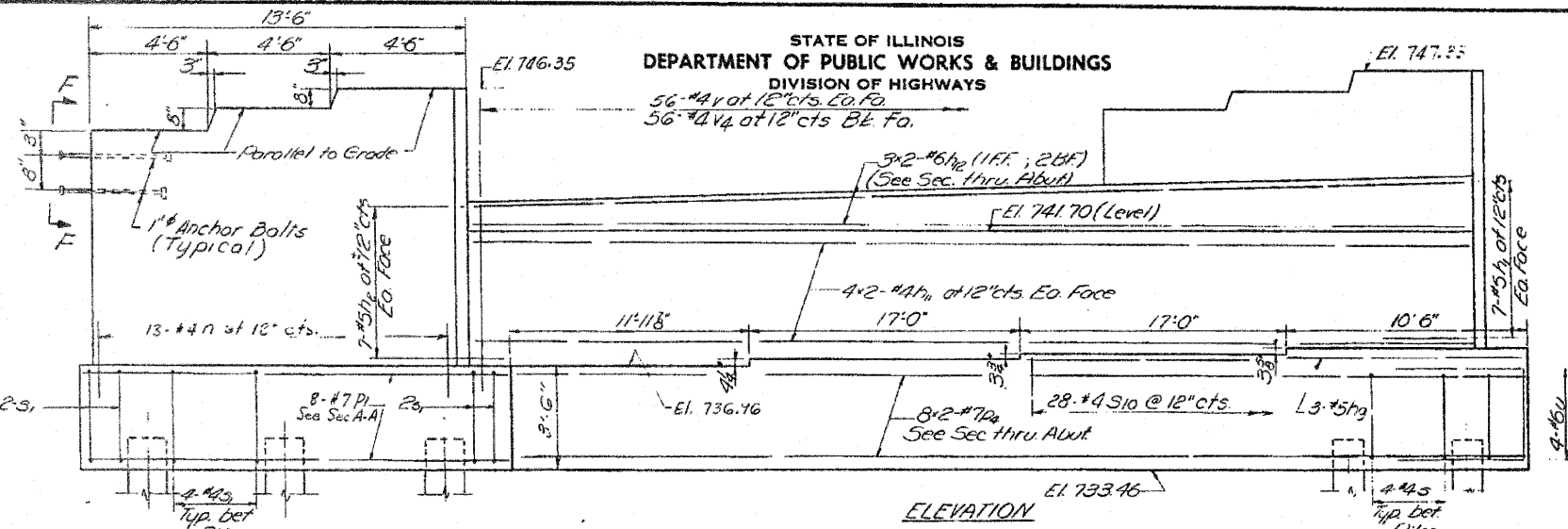
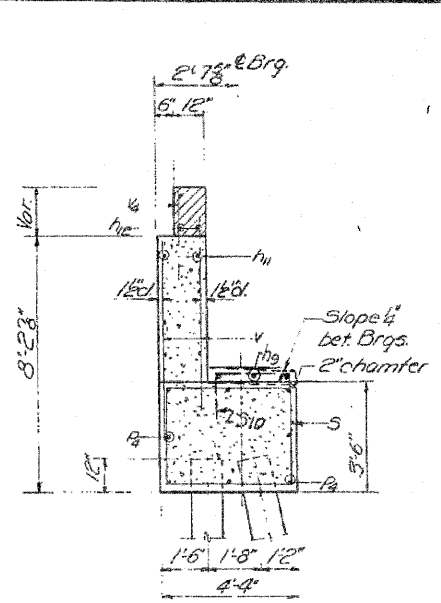
ROUTE
FAP 303 (IL 251) &
FAU 5146 (FOREST HILLS ROAD)

SECTION
1-HBR &
1-2-HB-D

COUNTY
WINNEBAGO

SHEET
171 OF 216

CONTRACT
64B79

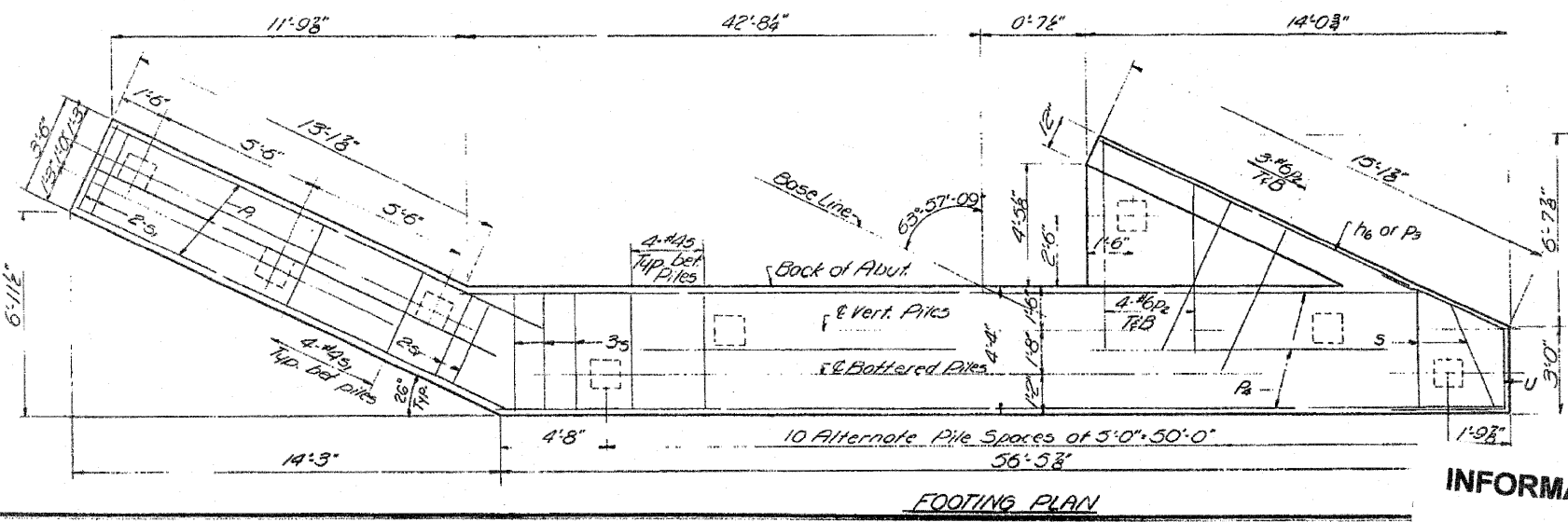


Note:
For bar bending details, see Sheet 13
For location of Electrical conduit, see sheet 14.

BILL OF MATERIALS

Bar	No.	Size	Length	Shape
h1	14	#5	7'-0"	
h2	14	#5	3'-6"	
h3	4	#4	4'-0"	
h4	4	#4	8'-6"	
h5	36	#4	13'-3"	
h6	2	#5	13'-0"	
h7	3	#5	27'-3"	
h11	16	#4	28'-3"	
h12	6	#6	28'-9"	
n	13	#4	11'-9"	
n1	12	#4	8'-9"	
p1	8	#7	15'-9"	
p2	14	#6	6'-0"	
p3	2	#6	12'-0"	
p4	16	#7	29'-0"	
s	44	#4	13'-11"	
s1	12	#4	13'-3"	
s10	28	#4	8'-0"	
u	4	#6	11'-6"	
v	112	#4	7'-0"	
v1	20	#4	9'-3"	
v2	16	#4	8'-6"	
v3	20	#4	7'-9"	
v4	56	#4	4'-0"	
Class X Concrete				Cu. Yds. 68.1
Reinforcement Bars				Lbs. 4520
Concrete Piles				Lin. Ft. 350
Test Piles Concrete				Each 1

PILE DATA
Type: Concrete
Capacity: 35 Tons
Estd Length: 25 Ft.
No. Reqd: 15 (Incl 1 Test Pile)



DESIGNED: [Signature]
CHECKED: [Signature]
DRAWN: [Signature]
CHECKED: [Signature]

APRIL 20 1966
EXAMINED: [Signature]
PASSED: [Signature]
APPROVED: [Signature]

NORTH ABUTMENT
F.A. RTE 188 SEC. 1-24B
WINNEBAGO COUNTY
STA. 688 + 32.18

INFORMATION ONLY