

STATE OF ILLINOIS  
DEPARTMENT OF TRANSPORTATION

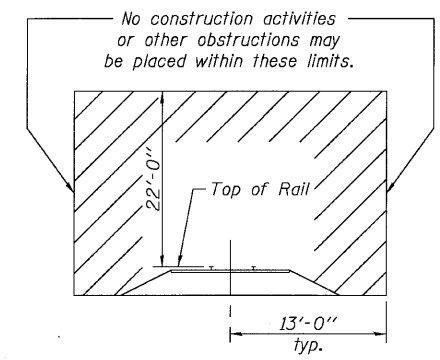
Bench Mark: #38 Spike in RR Tie Fence Post Approx. 175' from Exist. Sect. Line. Elevation: 648.80. Station 47+89 Lt.  
Existing Structure: S.N. 053-0144 (SB) and 053-0145 (NB) built in 1980 as FAI Route 55, Section 53-1VB at Station 270+31.86.  
Each structure consists of 3-Spans of reinforced concrete deck on continuous steel wide flange beams supported by three-column piers on spread footings with creosoted piles and pile bent abutments with concrete piles. 142'-9" back to back of abutments, 42'-0" out to out width. Existing structures to be removed and replaced. Traffic to be maintained using Stage Construction.  
No salvage.

STATION 270+31.86  
BUILT 2011 BY  
STATE OF ILLINOIS  
F.A.I. RT. 55 SEC. (53-1)BR & BR-1  
LOADING HL-93  
STRUCTURE NO. 053-0187

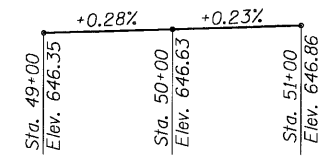
**N.B. NAME PLATE**  
See Std. 515001

STATION 270+31.86  
BUILT 2011 BY  
STATE OF ILLINOIS  
F.A.I. RT. 55 SEC. (53-1)BR & BR-1  
LOADING HL-93  
STRUCTURE NO. 053-0186

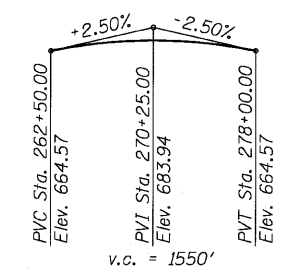
**S.B. NAME PLATE**  
See Std. 515001



**MINIMUM CONSTRUCTION CLEARANCES**



**TOP OF RAIL ELEVATIONS  
NORFOLK SOUTHERN RAILWAY**



**PROFILE GRADE**  
Along C I-55 (SB) & I-55 (NB)

**DESIGN SPECIFICATIONS**

2007 AASHTO LRFD Bridge Design Specifications with 2008 & 2009 Interims

**LOADING HL-93**

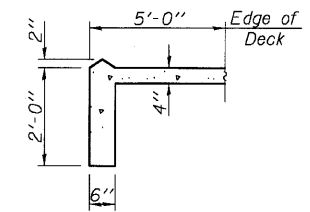
Allow 50 #/Sq.Ft. for future wearing surface.

**DESIGN STRESSES**

**FIELD UNITS**  
f'c = 3,500 psi  
fy = 60,000 psi (Reinf.)  
fy = 50,000 (M270 Grade 50W)

**SEISMIC DATA**

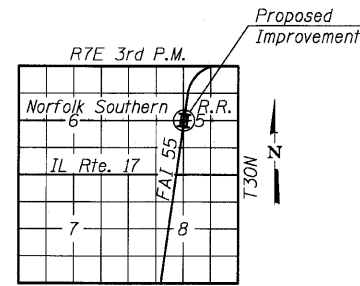
Seismic Performance Zone (SPZ) = 1  
Soil Site Class = C  
Design Spectral Acceleration at 1.0 sec (SD1) = 0.077g  
Design Spectral Acceleration at 0.2 sec (SD5) = 0.13g



**SECTION A-A**

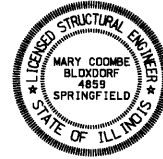
**APPROVED**  
FOR STRUCTURAL ADEQUACY ONLY

*Ralph E. Anderson*  
ENGINEER OF BRIDGES AND STRUCTURES



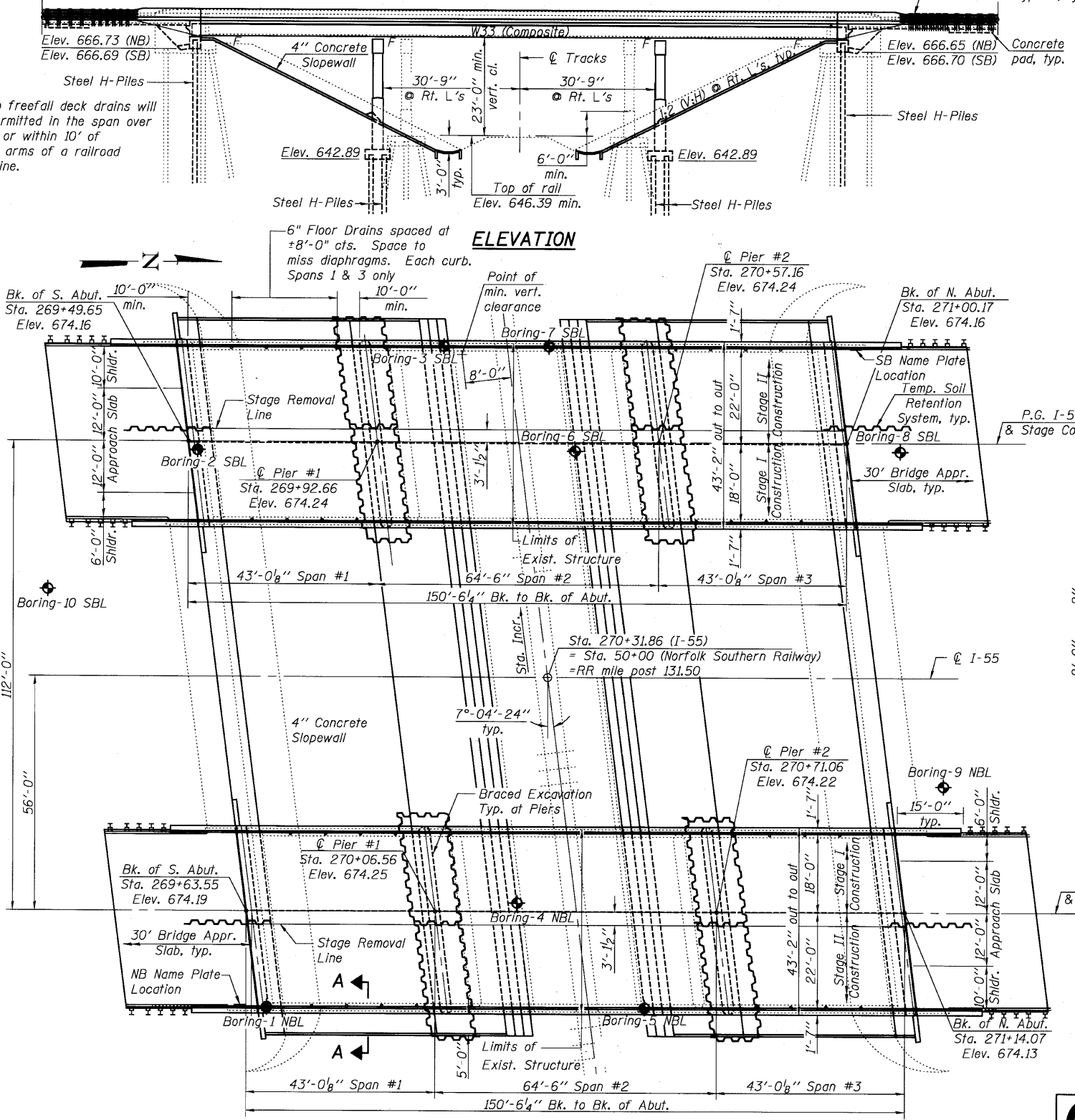
**LOCATION SKETCH**

P.G. I-55 (NB)  
& Stage Const. Line



*Mary Coombe Bloxdorf*  
ILLINOIS STRUCTURAL NO. 4859  
EXPIRES 11/30/10  
DATE: 8/10/10

**GENERAL PLAN**  
**I-55 OVER NORFOLK SOUTHERN RAILWAY**  
**FAI 55 - SECTION (53-1)HBR & HBR-1**  
**STATION 270+31.86**  
**LIVINGSTON COUNTY**  
**STRUCTURE NO. 053-0187 (NB)**  
**STRUCTURE NO. 053-0186 (SB)**



PLOT DATE = 8/10/2010  
FILE NAME = 05030186\_0187-66856-01-01.dgn  
PLOT SCALE = 0.0031' / IN.  
USER NAME = GTC

<b>Coombe-Bloxdorf P.C.</b> - CIVIL ENGINEERS - - STRUCTURAL ENGINEERS - - LAND SURVEYORS - Design Firm License No. 184-002703	PROJECT NO. 05004-10 SCALE DATE 8/10/10 DESIGN BY GB/MCB DRAWN BY MML CHECKED BY MCB	SHEET NO. 1 42 SHEETS	F.A.I. RTE. 55 SECTION (53-1) HBR & HBR-1 COUNTY LIVINGSTON TOTAL SHEETS 102 SHEET NO. 20	CONTRACT NO. 66856 FED. ROAD DIST. NO. ILLINOIS FED. AID PROJECT
--	---	--------------------------	---	---