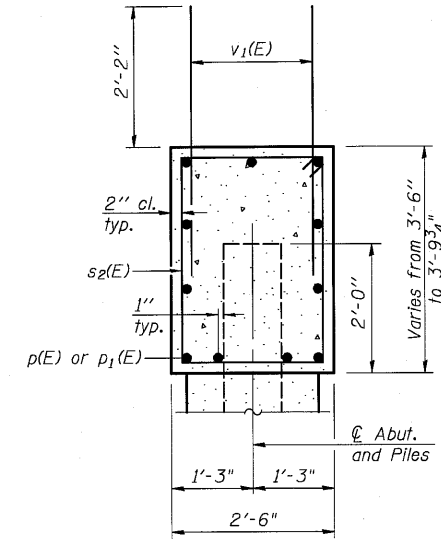
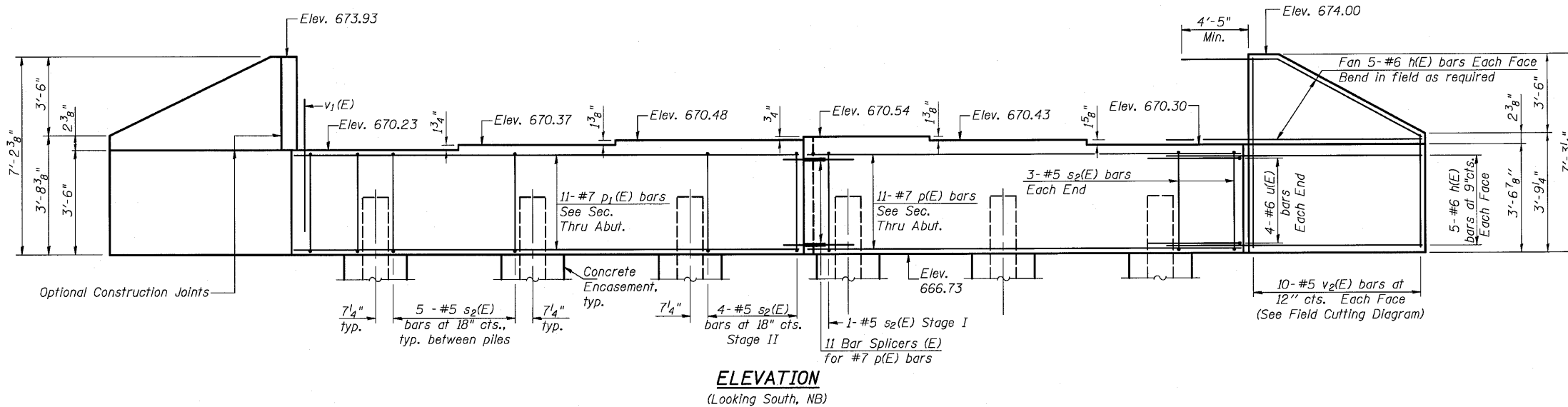
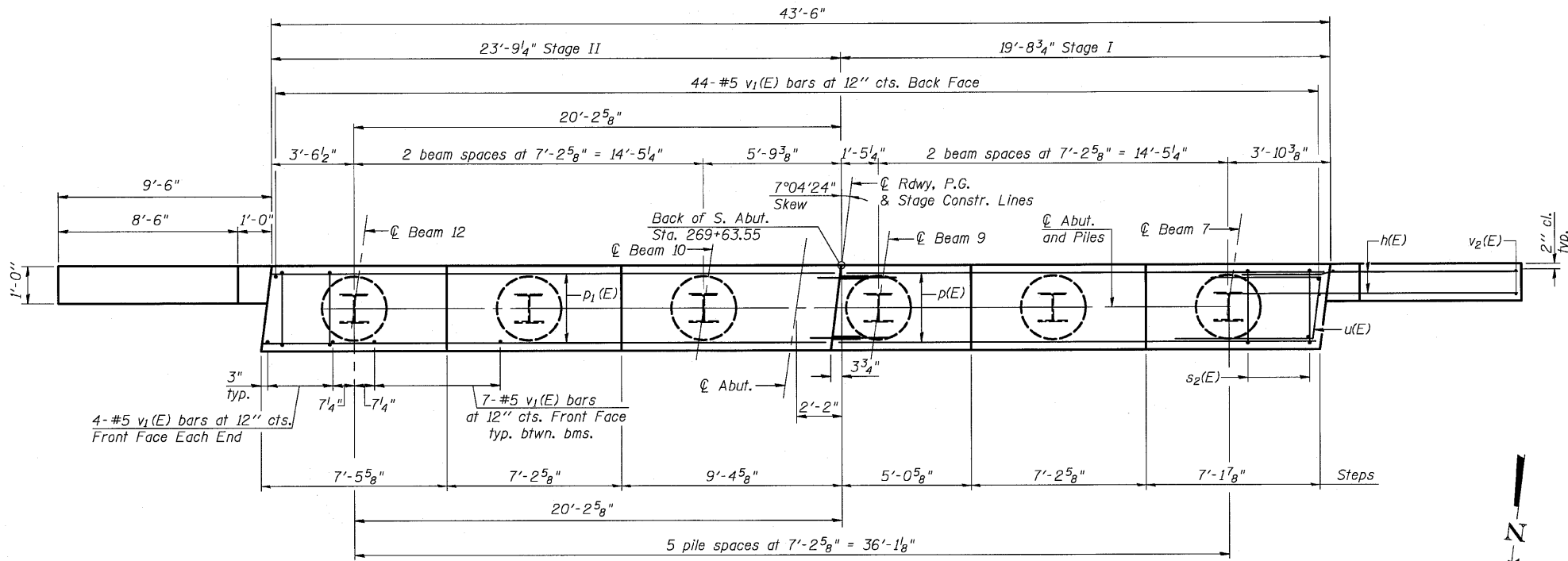


Notes:
Pour steps monolithically with cap.



SEC. THRU ABUT.



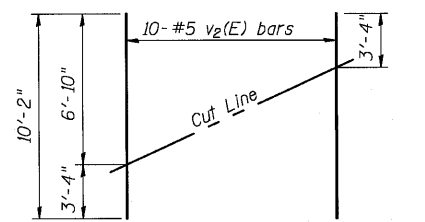
ABUTMENT
BILL OF MATERIAL

Bar	No.	Size	Length	Shape
h(E)	40	#6	13'-11"	—
p(E)	11	#7	19'-5"	—
p1(E)	11	#7	23'-5"	—
s2(E)	31	#5	11'-7"	□
u(E)	8	#6	10'-11"	┘
v1(E)	87	#5	4'-4"	—
v2(E)	20	#5	10'-2"	—
Structure Excavation				Cu. Yd. 148
Concrete Structures				Cu. Yd. 18.8
Reinforcement Bars, Epoxy Coated				Pound 2910
Furnishing Steel Piles, HP 12x53				Foot 140
Driving Piles				Foot 140
Test Pile, HP 12x53				Each 1
Concrete Encasement				Cu. Yd. 2.1
Bar Splicers (E)				Each 11

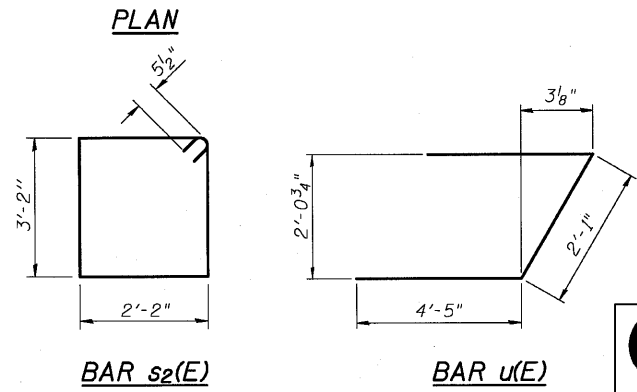
For details of Bar Splicers, see sheet 34 of 42.
For details of piles and Concrete Encasement, see sheet 33 of 42.

PILE DATA

Type: HP 12x53
Nominal Required Bearing: 280 Kips
Factored Resistance Available: 140 Kips
Est. Length: 28'
No. Production Piles: 5
No. Test Piles: 1



FIELD CUTTING DIAGRAM
Order v2(E) full length. Cut as shown and use remainder of bars in opposite face.



BAR s2(E) BAR u(E)

SOUTH ABUTMENT NB
STRUCTURE NO. 053-0187 (NB)

GB Coombe-Bloxdorf P.C. -CIVIL ENGINEERS- -STRUCTURAL ENGINEERS- -LAND SURVEYORS- Design Firm License No. 184-002703	PROJECT NO. 05004-10	F.A.I. RTE. 55	SECTION (53-1) HBR & HBR-1	COUNTY LIVINGSTON	TOTAL SHEETS 102	SHEET NO. 46
	SCALE 1/4" = 1'-0"	DATE 8/10/10	CONTRACT NO. 66856			
	DESIGN BY GB/MCB DRAWN BY MML CHECKED BY MCB	SHEET NO. 27 42 SHEETS	FED. ROAD DIST. NO.	ILLINOIS	FED. AID PROJECT	