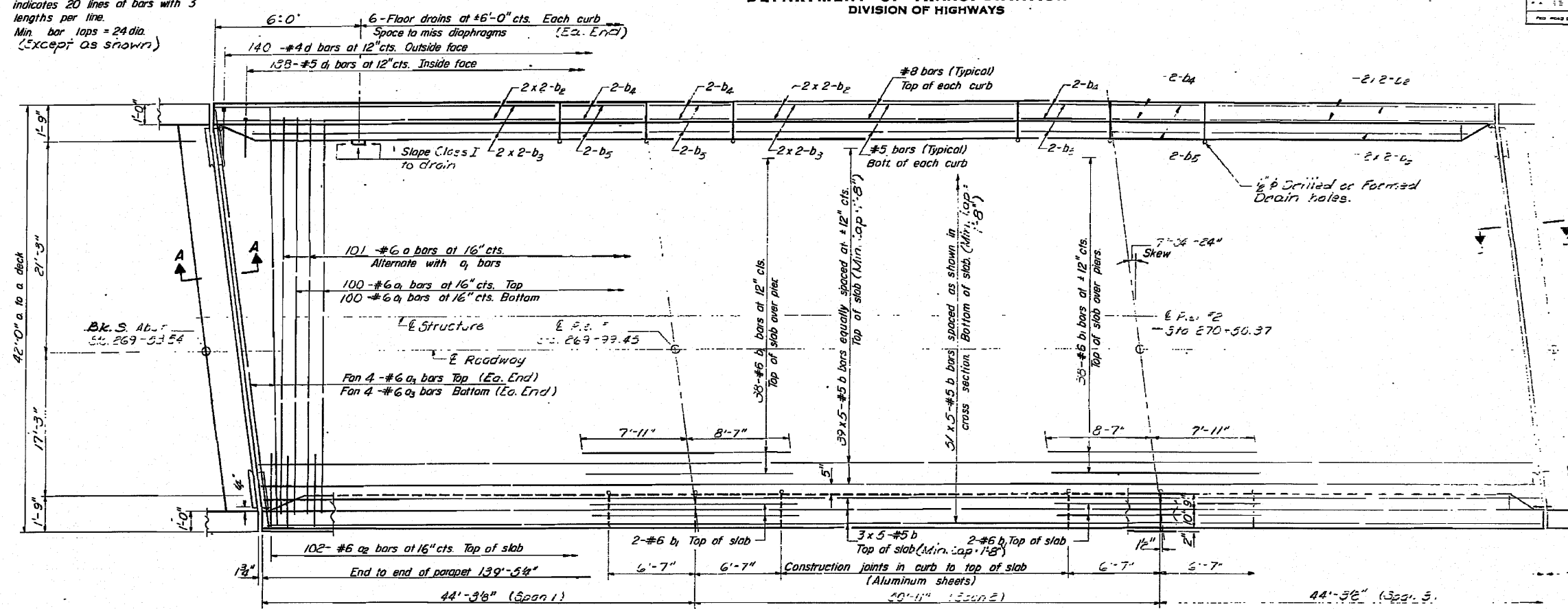


STATE OF ILLINOIS
DEPARTMENT OF TRANSPORTATION
DIVISION OF HIGHWAYS

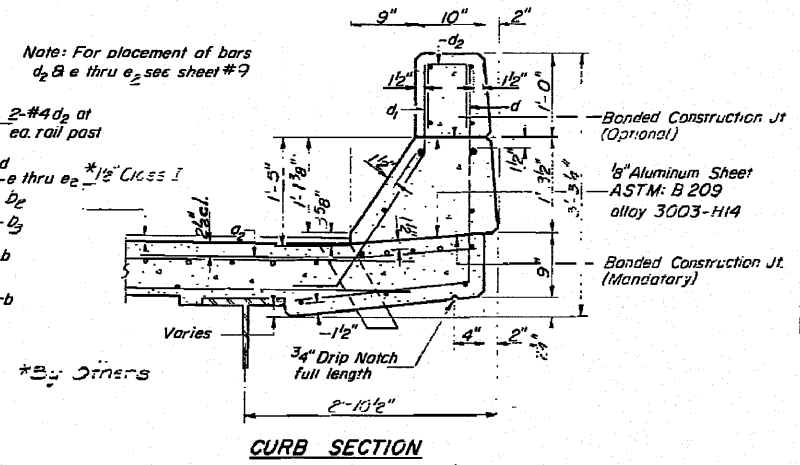
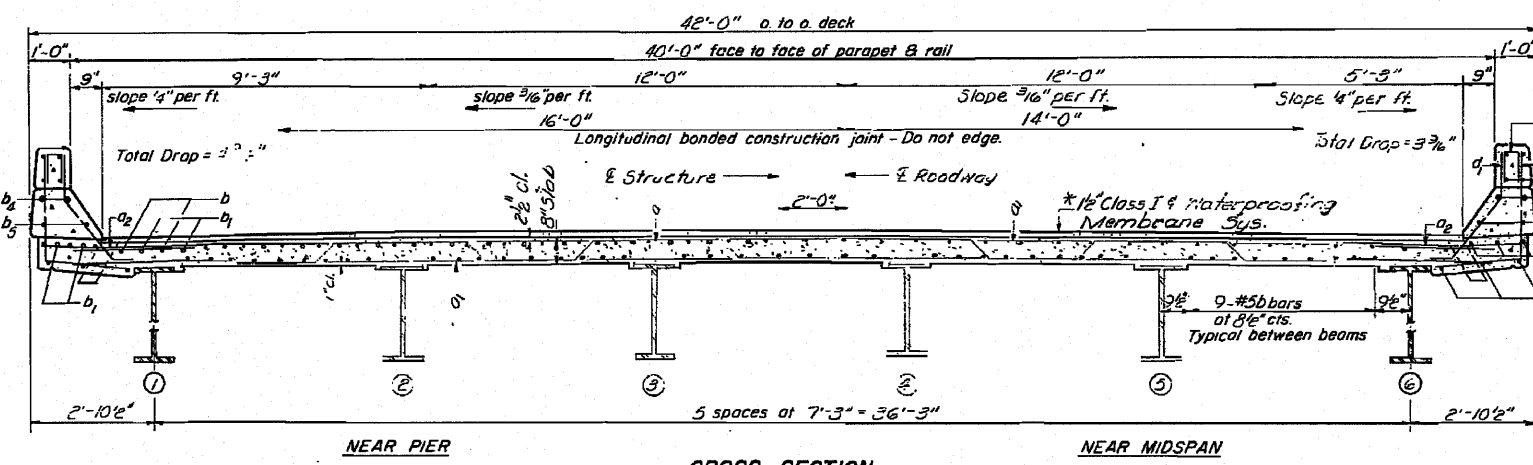
ROUTE NO.	SECTION	POST-MILE	SHEET NO.	SHEET NO.
55	(53-DHBR & HBR-1)		102	63

Note:
Bars indicated thus 20 x 3-#5 etc.
indicates 20 lines of bars with 3
lengths per line.
Min. bar laps = 24 dia.
(Except as shown)



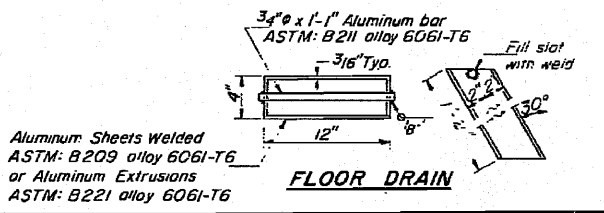
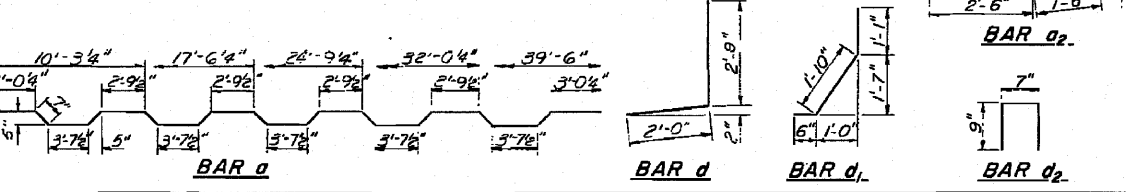
BILL OF MATERIAL

Bar No	Size	Length	Shape
a	101 #6	41'-2"	~
a ₁	200 #6	25'-0"	~
a ₂	200 #6	4'-0"	~
a ₃	16 #6	4'-5"	~
b	25 #5	20'-2"	~
b ₁	24 #6	16'-6"	~
b ₂	22 #6	9'-0"	~
b ₃	24 #6	9'-5"	~
b ₄	16 #6	5'-0"	~
b ₅	16 #6	16'-4"	~
d	200 #4	4'-9"	~
d ₁	276 #5	5'-5"	~
d ₂	72 #4	2'-1"	~
Reinforcement Bars Lbs 215.0			
Class X Concrete Cu Yds 73.9			



DESIGNED SHEN, T.M. & FA
CHECKED [Signature]
DRAWN Bev Robinson
CHECKED CG J.T.

EXAMINED [Signature] 10/10/1972
PASSED [Signature]
APPROVED [Signature]



The lengths and quantities of longitudinal reinforcement and Class X Concrete in parapets are not included in above quantities. See sheet

SUPERSTRUCTURE
SOUTH BOUNDARY LINES
LIVINGSTON COUNTY
STA 271+3.36