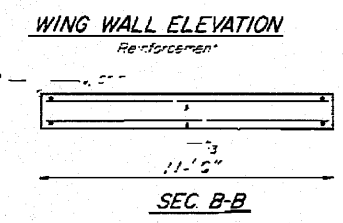
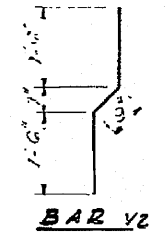
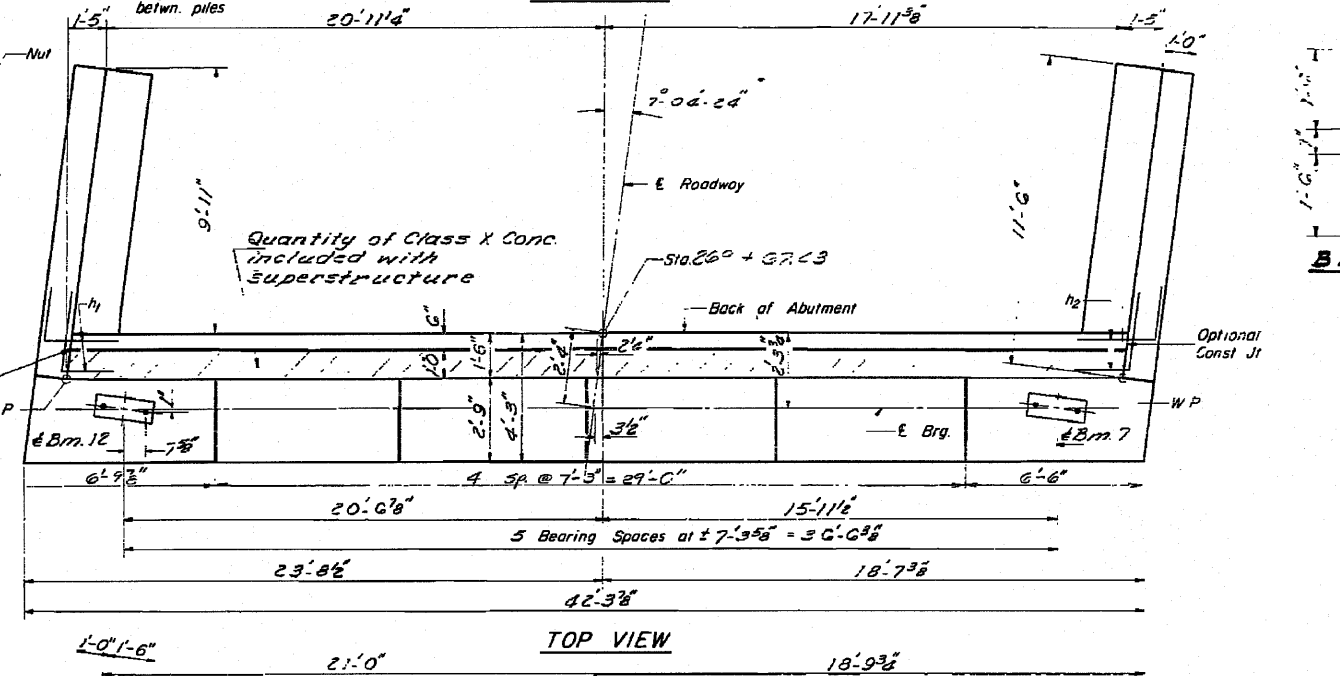
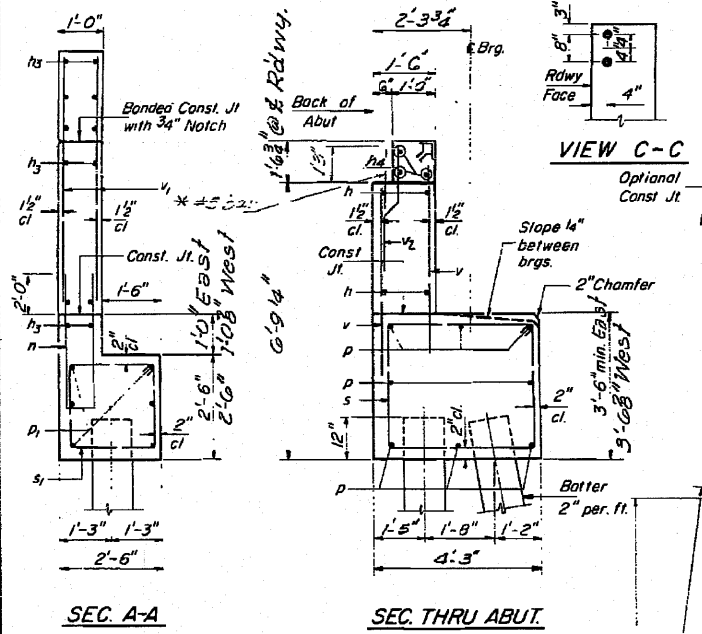
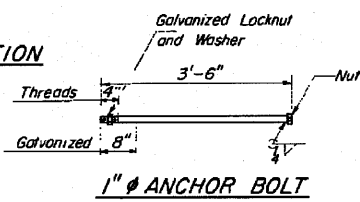
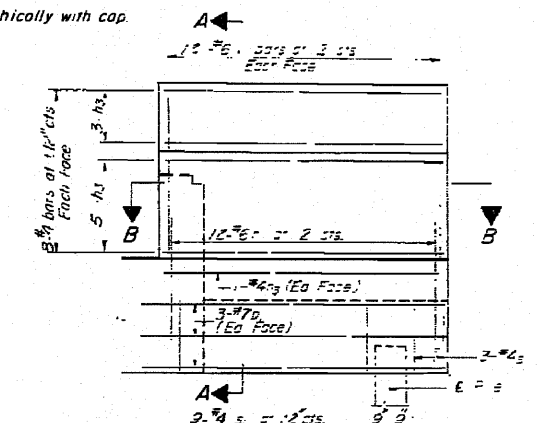
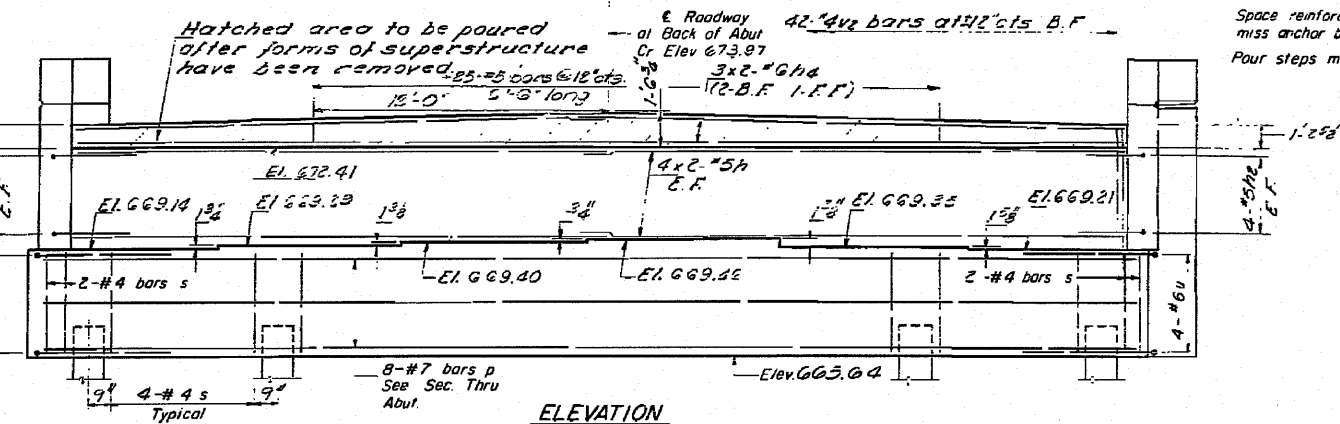
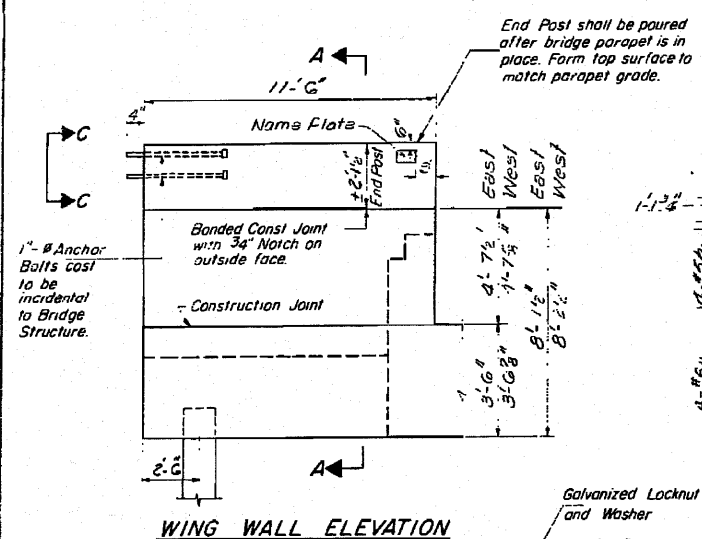


STATE OF ILLINOIS  
 DEPARTMENT OF TRANSPORTATION  
 DIVISION OF HIGHWAYS

PROJECT NO.	DATE	SCALE	SHEET NO.
55-118R-1	10/10/81	1/4" = 1'-0"	12



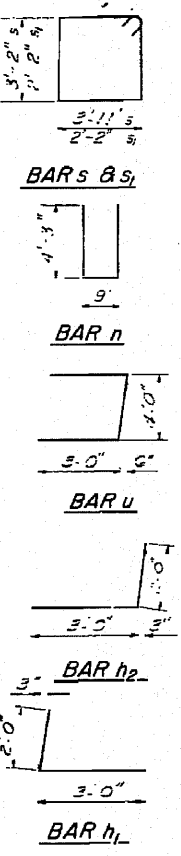
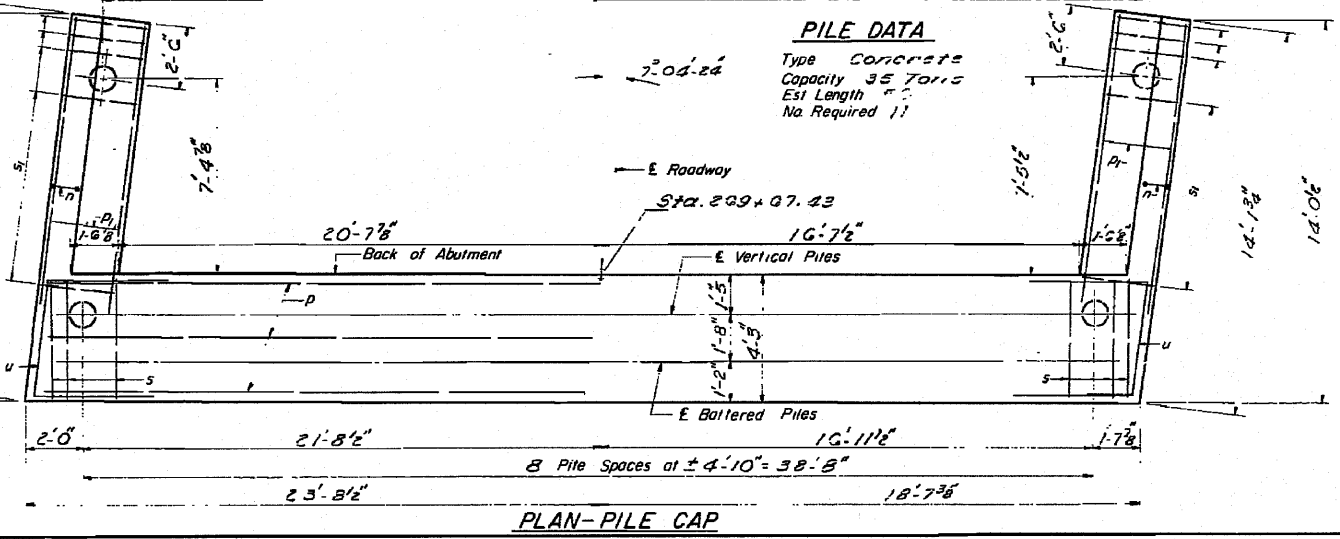
PILE DATA

Type Concrete

Capacity 35 Tons

Est Length 70'

No Required 11



BILL OF MATERIAL

Bz	Nb	Size	Length	S'CSB
1	2	#5	5'-0"	
2	8	#5	5'-0"	
3	8	#5	5'-0"	
4	3	#4	7'-0"	
5	2	#6	20'-9"	
6	2	#6	10'-0"	
7	24	#6	5'-3"	
8	8	#7	42'-0"	
9	2	#7	3'-0"	
10	30	#6	4'-11"	
11	24	#4	5'-5"	
12	8	#6	10'-0"	
13	24	#6	5'-3"	
14	28	#5	3'-3"	
15	42	#6	3'-9"	
Class X Concrete				
Reinforcement Bars				
Concrete Piles				

DESIGNED: HEN. T. AIFA

CHECKED: [Signature]

DRAWN: J. KESLER

CHECKED: S.T.

APPROVED: [Signature]

CHIEF HIGHWAY ENGINEER

SO ABUT. NO. BD. LANE  
 F.A.I. RT. 55 SEC. 53-1VB  
 LIVINGSTON COUNTY  
 STATION 270+31.56