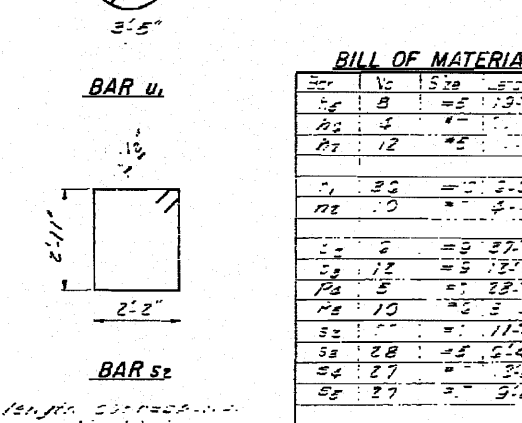
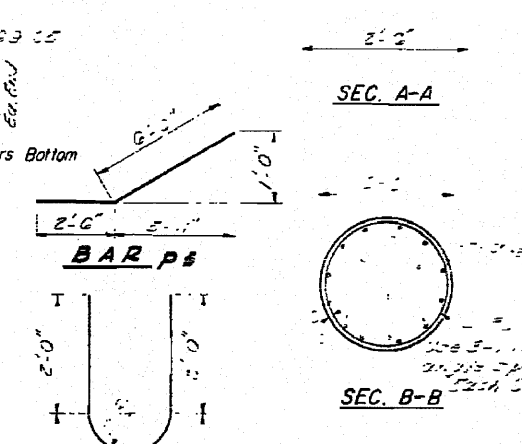
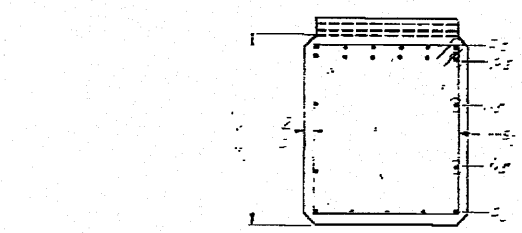
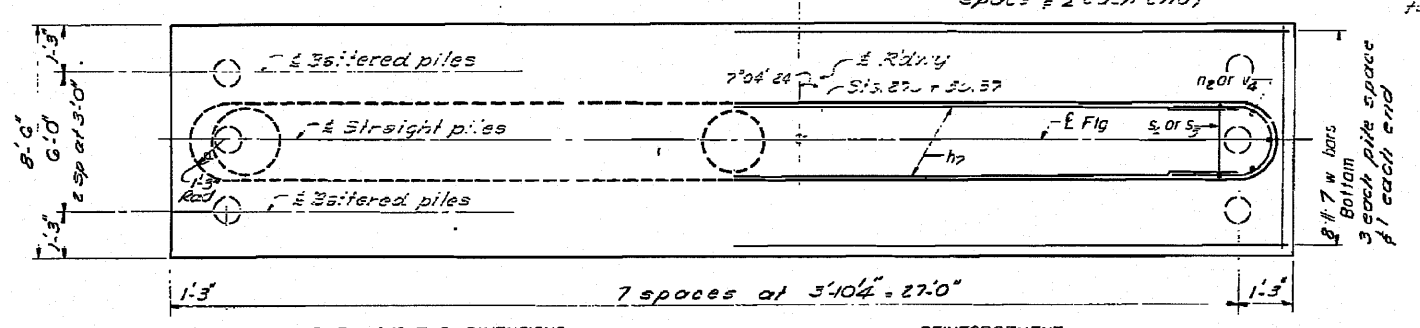
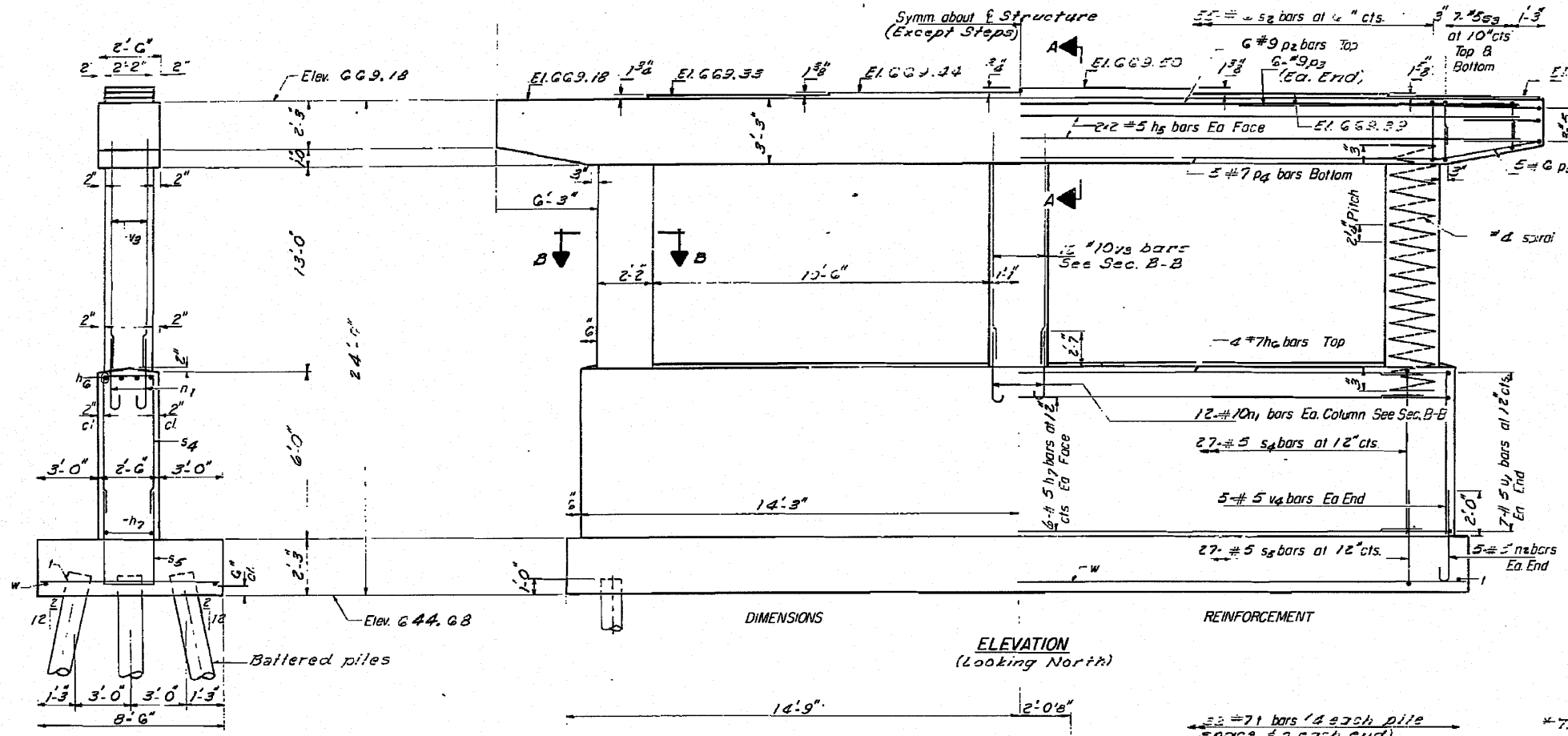
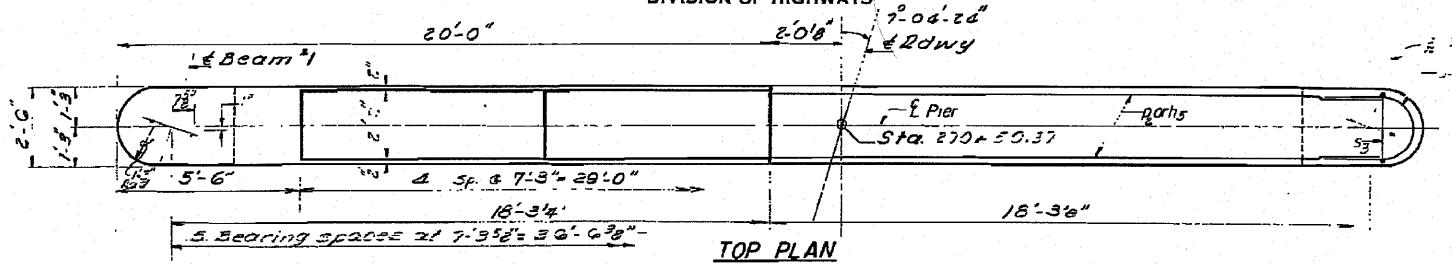


**NOTES:**  
 Space Reinforcement in cap to miss anchor bolts.  
 All edges shall have standard 3/4 chamfer except as noted.  
 Pour steps monolithically with cap  
 All 5/8" dia. 1/2 turns.

STATE OF ILLINOIS  
 DEPARTMENT OF TRANSPORTATION  
 DIVISION OF HIGHWAYS

PROJECT NO.	55-118R	SHEET NO.	102
SECTION	(53-118R & HBR-1)	COUNTY	IRROUQUOIS
DATE	11-11-70	TOTAL SHEETS	67
CONTRACT NO.	66856		



**BILL OF MATERIAL**

Bar	No	Size	Length	Notes
p6	8	#5	13'-0"	
p7	4	#5	13'-0"	
p7	12	#5	13'-0"	
u1	20	#5	13'-0"	
u2	10	#5	13'-0"	
s3	5	#5	13'-0"	
s3	12	#5	13'-0"	
s3	5	#5	13'-0"	
s3	10	#5	13'-0"	
s3	20	#5	13'-0"	
s3	27	#5	13'-0"	
s3	27	#5	13'-0"	
s3	5	#5	13'-0"	
s3	132	#5	13'-0"	WWW
s3	20	#5	13'-0"	
s3	20	#5	13'-0"	
s3	10	#5	13'-0"	
s3	10	#5	13'-0"	
s3	5	#5	13'-0"	
s3	5	#5	13'-0"	

**ABB DIMENSIONS**

Bar	A	B
s3	2'-2"	2'-1"
s4	2'-2"	3'-5"
s5	2'-2"	3'-9"

**PILE DATA**  
 Type Creosoted  
 Capacity 24 Tons  
 Est. Length 19  
 No. Required 23 Piles + 1 Test Pile

Preliminary  
 DESIGNED: SHEN, T.S.A. FA  
 CHECKED: [Signature]  
 DRAWN: J. Kessler  
 CHECKED: S.T.  
 EXAMINED: [Signature] 1970  
 PASSED: [Signature]  
 APPROVED: [Signature]

P-24 0-5-70

**PIER 2, S.O.B.D. LANE  
 I.A.I. RT 55, SEC. 59-1VB  
 LIVINGSTON COUNTY  
 STATION 270+31.86**