

BENCHMARKS:
 BM#1 - CHISELED " " TOP S.W. COR. BRIDGE DECK
 17' RT., STA. 163+11.11
 ELEV. 630.85
 BM#2 - RAILROAD SPIKE IN POWER POLE
 40' RT., STA. 162+98
 ELEV. 630.78

EDDIE A. RABOIN
 SE 1/4, SW 1/4, SEC 24, T. 28 N., R. 14 W., 2ND P.M.

EDDIE A. RABOIN
 SW 1/4, SE 1/4, SEC 24, T. 28 N., R. 14 W., 2ND P.M.

CROPLAND

CROPLAND

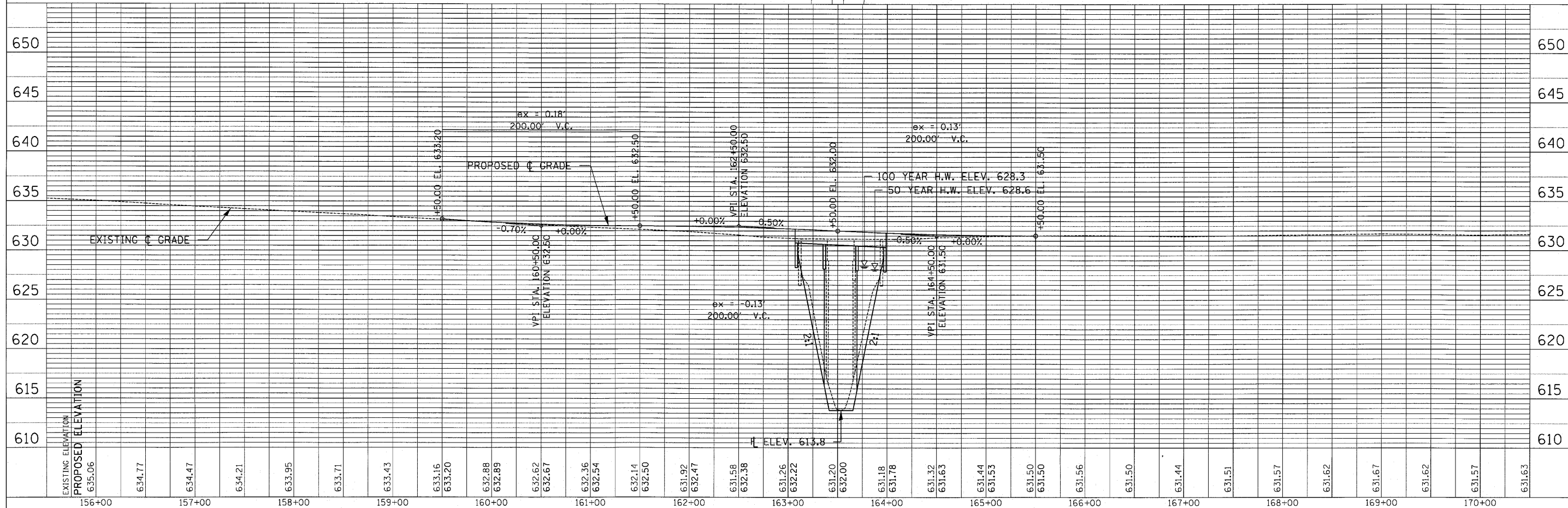
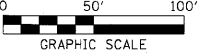
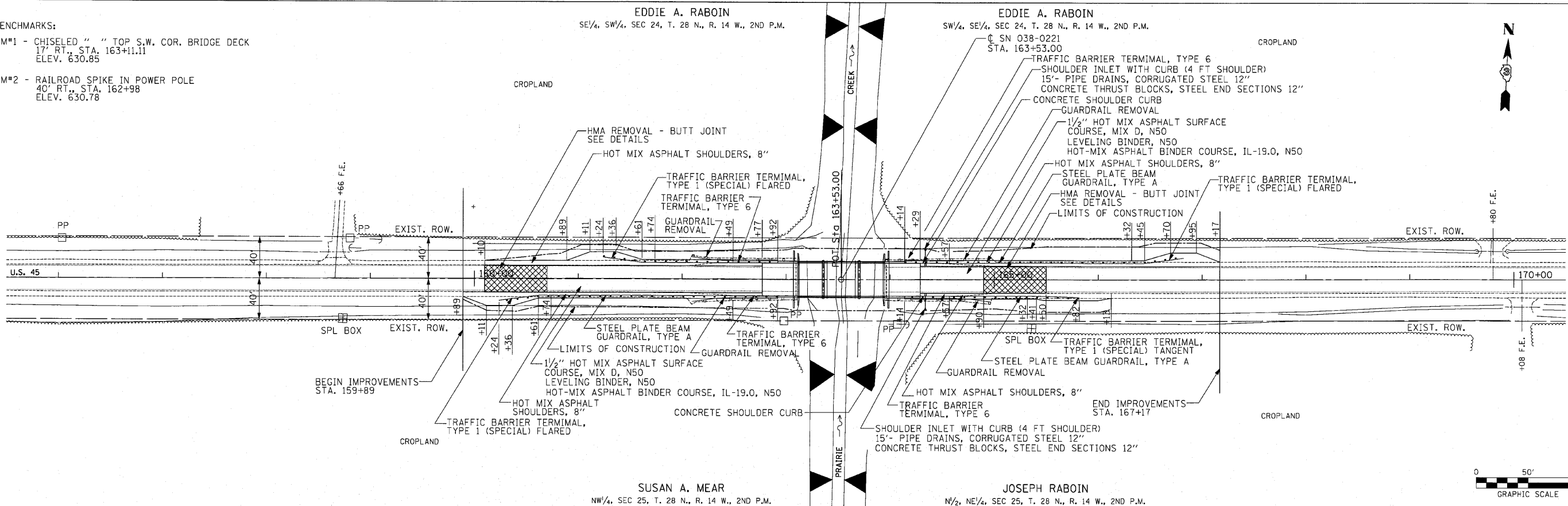
CROPLAND

SUSAN A. MEAR
 NW 1/4, SEC 25, T. 28 N., R. 14 W., 2ND P.M.

JOSEPH RABOIN
 N 1/2, NE 1/4, SEC 25, T. 28 N., R. 14 W., 2ND P.M.

PLAN
 SURVEYED BY
 PLOTTED BY
 CHECKED BY
 DATE
 NO. _____
 FILE NAME _____

PROFILE
 SURVEYED BY
 PLOTTED BY
 CHECKED BY
 DATE
 NO. _____
 FILE NAME _____



FILE NAME = ...ND366861-SHT-plan&profile.dgn	USER NAME = SAW	DESIGNED - RAC	REVISED -	STATE OF ILLINOIS DEPARTMENT OF TRANSPORTATION 	PLAN & PROFILE STA. 159+84 TO STA. 167+24 SCALE: 50 SHEET NO. 7 OF 42 SHEETS	F.A.P. RTE. 681	SECTION 118 BR	COUNTY IROQUOIS	TOTAL SHEETS 42	SHEET NO. 7
PLOT SCALE = 50.0000' / IN.	CHECKED - RAC	REVISOR -	FED. ROAD DIST. NO.			ILLINOIS FED. AID PROJECT				
PLOT DATE = 7/29/2010	DATE - 07/30/10	REVISOR -								