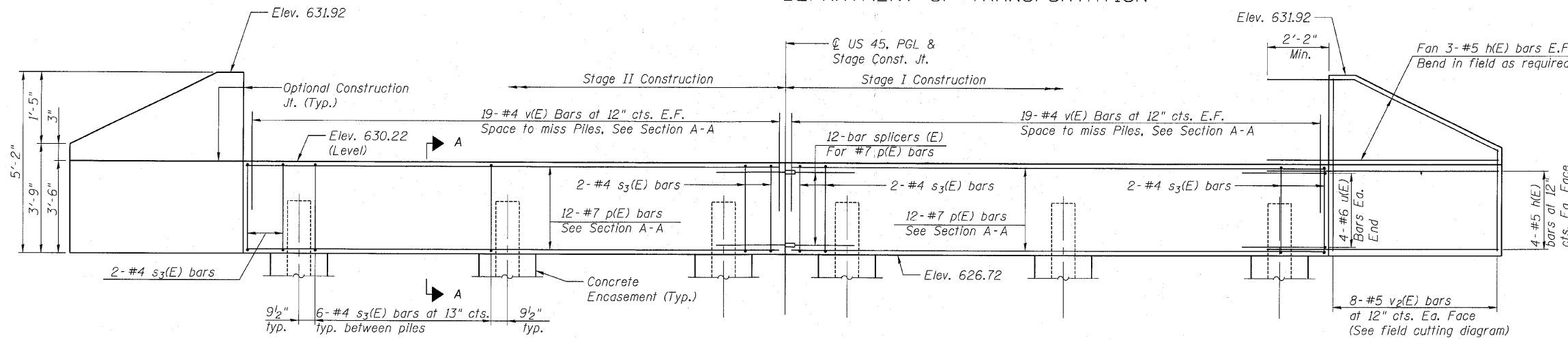
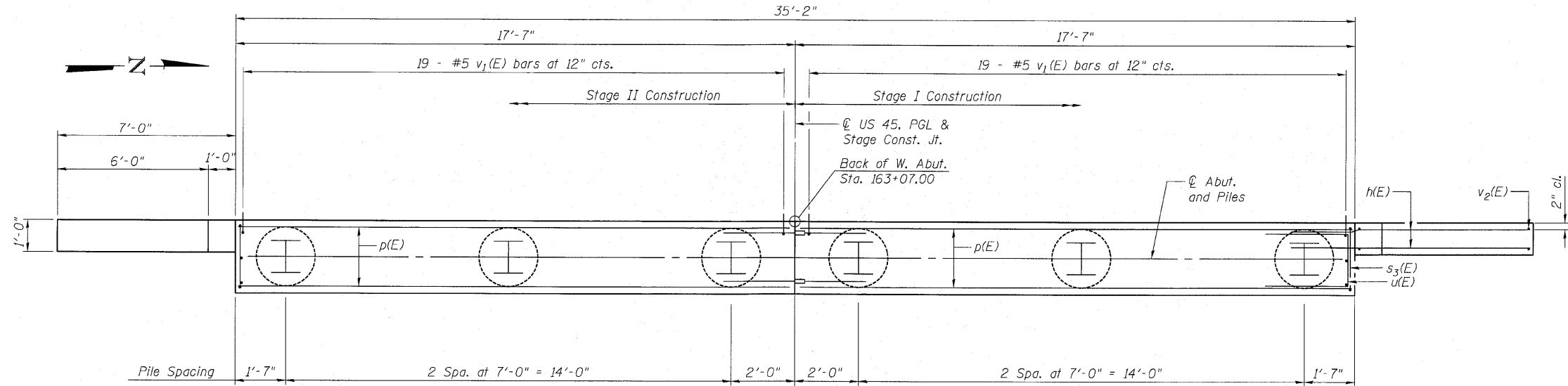


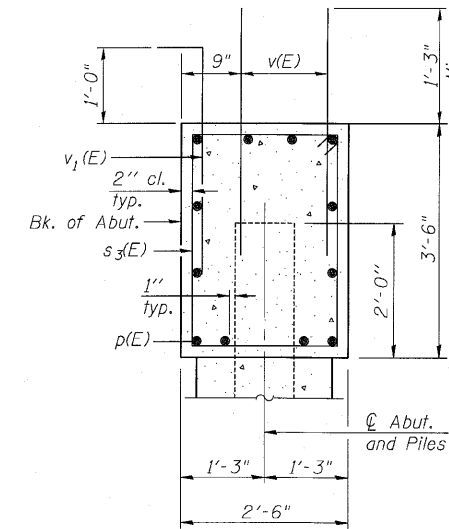
STATE OF ILLINOIS  
DEPARTMENT OF TRANSPORTATION



ELEVATION



PLAN



SECTION A-A

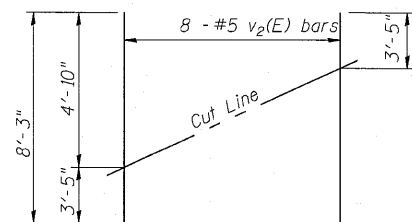
BILL OF MATERIAL

Bar No.	Size	Length	Shape
h(E)	#5	9'-0"	—
p(E)	#7	17'-3"	—
s3(E)	#4	11'-5"	□
u(E)	#6	11'-1"	□
v(E)	#4	2'-9"	—
v1(E)	#5	2'-10"	—
v2(E)	#5	8'-3"	—
Structure Excavation	Cu. Yd.	23.8	
Concrete Structures	Cu. Yd.	13.8	
Reinforcement Bars, Epoxy Coated	Pound	2,015	
Furnishing Steel Piles HP12x74	Foot	205	
Driving Piles	Foot	205	
Test Pile HP12x74	Each	1	
Pile Shoes	Each	6	
Concrete Encasement	Cu. Yd.	2.1	

PILE DATA

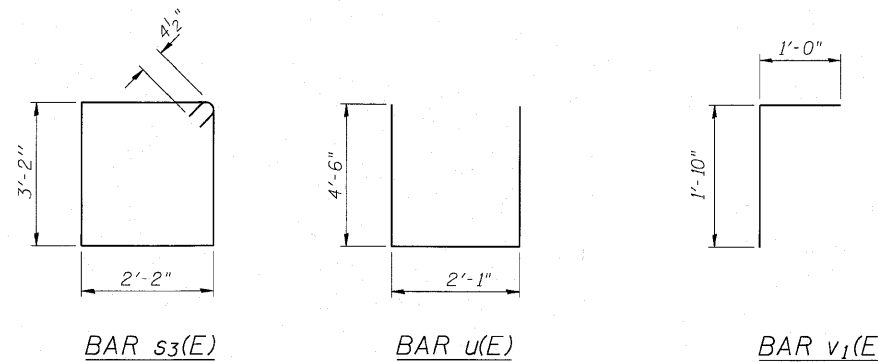
Type: HP 12x74 with Pile Shoes  
Nominal Required Bearing: 359 kips  
Factored Resistance Available: 180 kips  
Est. Length: 41'-0"  
No. Production Piles: 5  
No. Test Piles: 1

Notes:  
For Details of Bar Splicers, see Sheet 17 of 20.  
For Details of Piles and Concrete Encasement, see Sheet 18 of 20.  
For section thru abutment showing drainage see Sheet 2 of 20.



FIELD CUTTING DIAGRAM

Order v2(E) full length. Cut as shown and use remainder of bars in opposite face.



BAR S3(E)

BAR U(E)

BAR v1(E)

WEST ABUTMENT  
STRUCTURE NO. 038-0221

SHEET NO. 13 OF 20 SHEETS	F.A.P. RTE.	SECTION	COUNTY	TOTAL SHEETS	SHEET NO.
	681	118BR	IROQUOIS	42	22
			CONTRACT NO. 66861		
FED. ROAD DIST. NO. _ ILLINOIS FED. AID PROJECT					



Zroka Engineering, P.C.  
4216 North Hermitage  
Chicago, IL 60613

Date: 7-28-10 Drawn By: FJS Checked By: DZ

AI-0 11-1-09