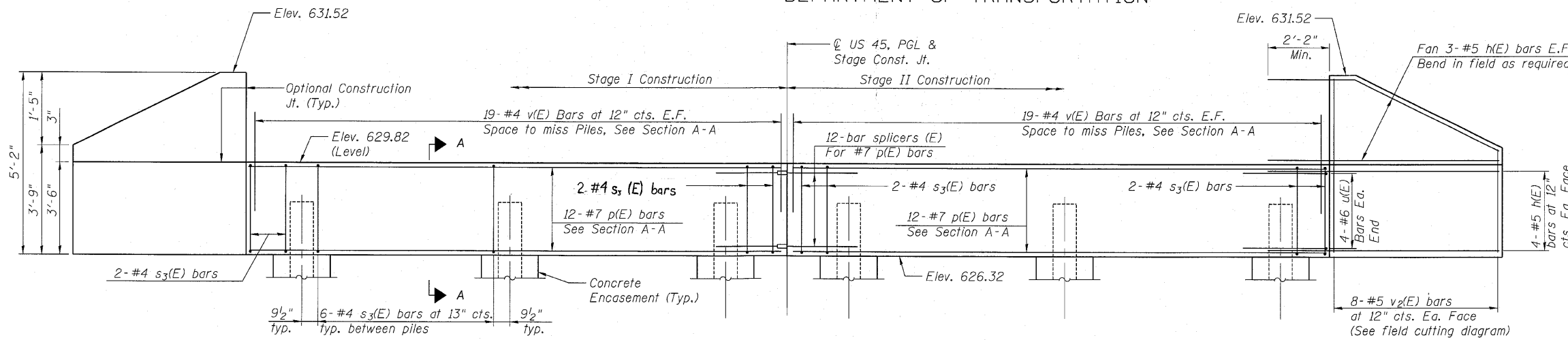
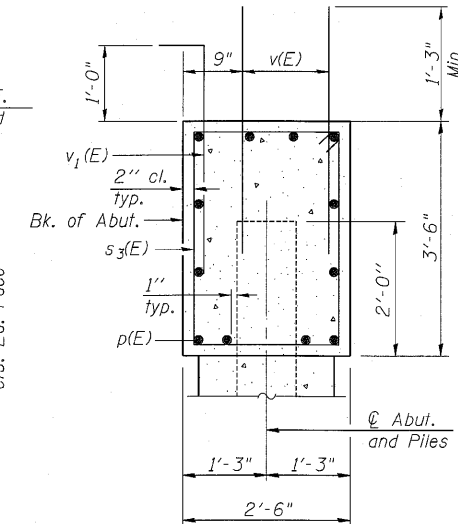


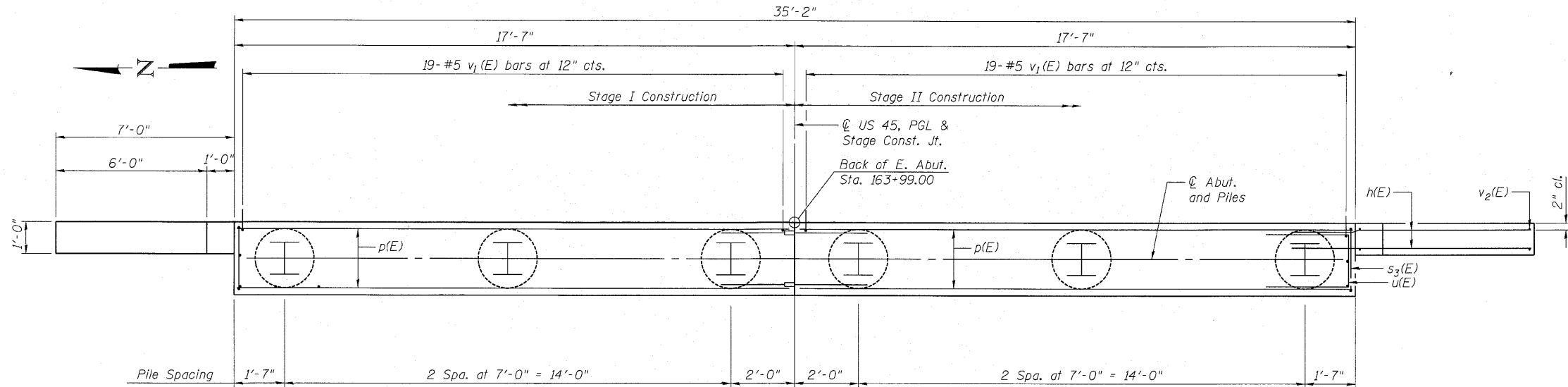
STATE OF ILLINOIS  
DEPARTMENT OF TRANSPORTATION



ELEVATION



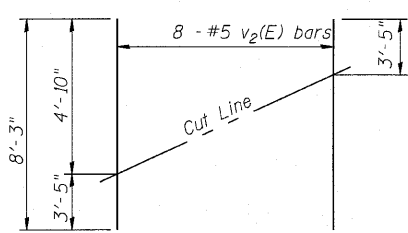
SECTION A-A



PLAN

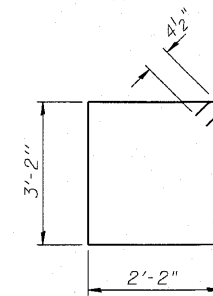
BILL OF MATERIAL

Bar	No.	Size	Length	Shape
h(E)	28	#5	9'-0"	—
p(E)	24	#7	17'-3"	—
s3(E)	32	#4	11'-5"	□
u(E)	8	#6	11'-1"	—
v(E)	76	#4	2'-9"	—
v1(E)	38	#5	2'-10"	—
v2(E)	32	#5	8'-3"	—
Structure Excavation		Cu. Yd.	26.2	
Concrete Structures		Cu. Yd.	13.8	
Reinforcement Bars, Epoxy Coated		Pound	2,015	
Furnishing Steel Piles HP12x74		Foot	246	
Driving Piles		Foot	246	
Pile Shoes		Each	6	
Concrete Encasement		Cu. Yd.	2.1	

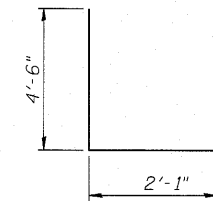


FIELD CUTTING DIAGRAM

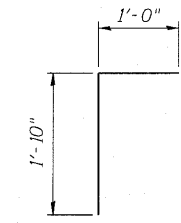
Order v2(E) full length. Cut as shown and use remainder of bars in opposite face.



BAR s3(E)



BAR u(E)



BAR v1(E)

PILE DATA

Type: HP 12x74 with Pile Shoes  
Nominal Required Bearing: 347 kips  
Factored Resistance Available: 173 kips  
Est. Length: 41'-0"  
No. Production Piles: 6  
No. Test Piles: 0

Notes:

- For Details of Bar Splicers, see Sheet 17 of 20.
- For Details of Piles and Concrete Encasement, see Sheet 18 of 20.
- For section thru abutment showing drainage see Sheet 2 of 20.

EAST ABUTMENT  
STRUCTURE NO. 038-0221

SHEET NO. 14 OF 20 SHEETS	F.A.P. RTE.	SECTION	COUNTY	TOTAL SHEETS	SHEET NO.
	681	118BR	IROQUOIS	42	23
CONTRACT NO. 66861					
FED. ROAD DIST. NO. _ ILLINOIS FED. AID PROJECT					