

Notes:
For Pile Details See Sheet 18 of 20.

For Bar Splicer Details See Sheet 17 of 20.

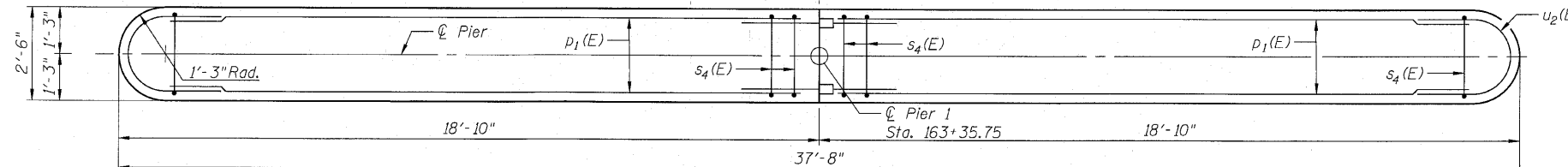
If a portion of the pier or concrete encasement is under water, reinforcement may be placed underwater into forms. Concrete shall be tremied according to article 503.08 of the Standard Specifications to an elevation of 1'-0" above the water line at the time of construction.

Item Underwater Structure Excavation Protection Location 2 is located at Pier 2.

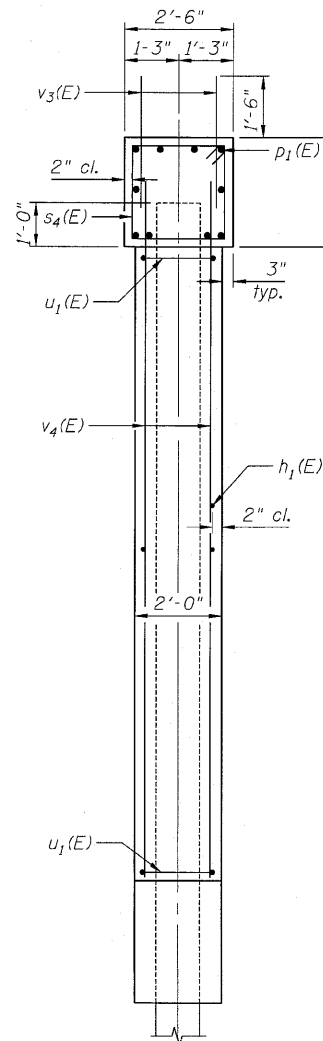
STATE OF ILLINOIS
DEPARTMENT OF TRANSPORTATION

Stage II Construction Stage I Construction

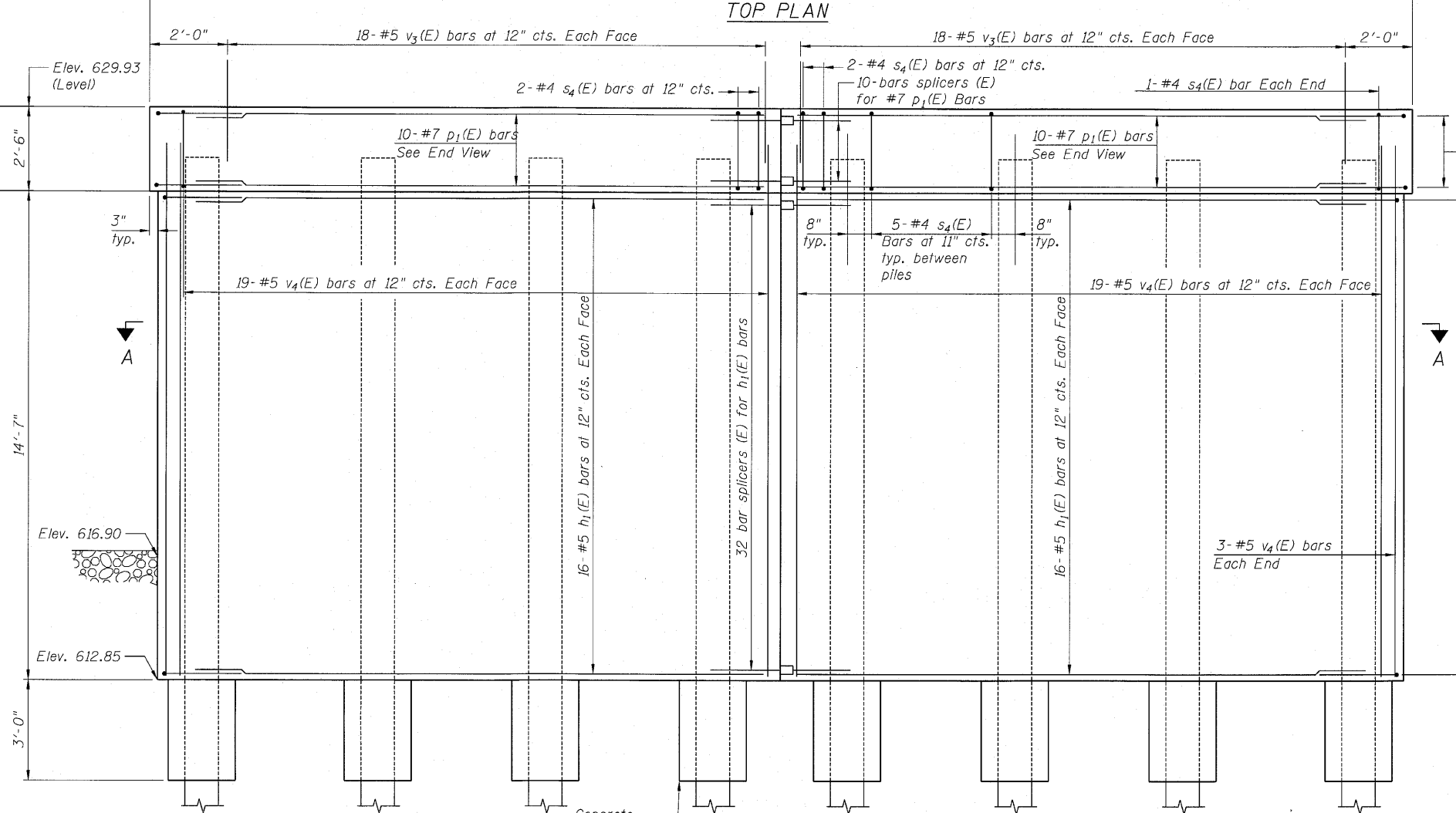
US 45, PGL & Stage Const. Jt.



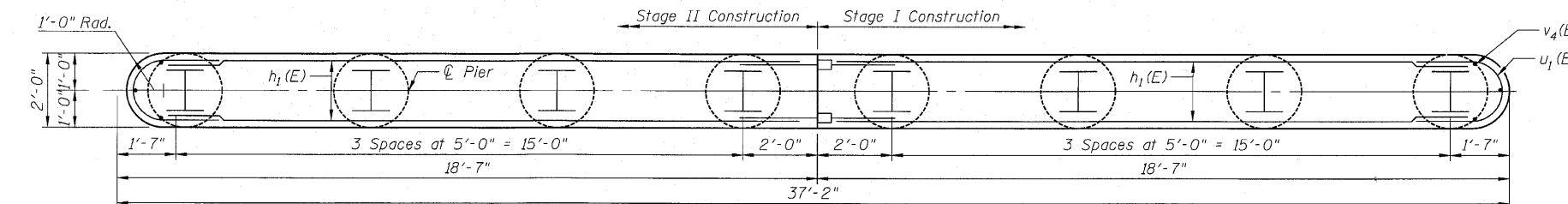
TOP PLAN



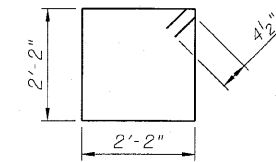
END VIEW



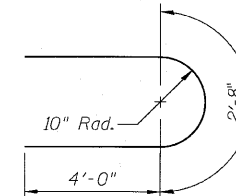
ELEVATION
(Looking West)



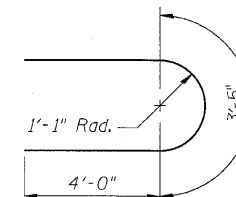
SECTION A-A



BAR s4(E)



BAR u1(E)



BAR u2(E)

BILL OF MATERIAL

Bar	No.	Size	Length	Shape
h1(E)	64	#5	17'-5"	—
p1(E)	20	#7	17'-5"	—
s4(E)	36	#4	9'-5"	□
u1(E)	32	#6	10'-8"	U
u2(E)	8	#6	11'-5"	U
v3(E)	72	#5	3'-6"	—
v4(E)	82	#5	16'-4"	—
Structure Excavation		Cu. Yd.	36.5	
Concrete Structures		Cu. Yd.	48.3	
Reinforcement Bars, Epoxy Coated		Pound	4,415	
Furnishing Steel Piles HP12x74		Foot	464	
Driving Piles		Foot	464	
Pile Shoes		Each	8	
Concrete Encasement		Cu. Yd.	2.8	
Underwater Structure Excavation Protection Location 2		Each	1	

PIER 2
STRUCTURE NO. 038-0221

PILE DATA

Type: HP 12X74 with Pile Shoes
Nominal Required Bearing: 446 Kips
Factored Resistance Available: 223 Kips
Est. Length: 58'-0"
No. Production Piles: 8
No. Test Piles: 0

ZROKA Engineering, P.C.
4216 North Hermitage
Chicago, IL 60613

Date: 7-28-10 Drawn By: AJP Checked By: DZ

PC-1

11-1-09

SHEET NO. 16 OF 20 SHEETS	F.A.P. RTE.	SECTION	COUNTY	TOTAL SHEETS	SHEET NO.
	681	118BR	IROQUOIS	42	25
CONTRACT NO. 66861					
FED. ROAD DIST. NO. _ ILLINOIS FED. AID PROJECT					