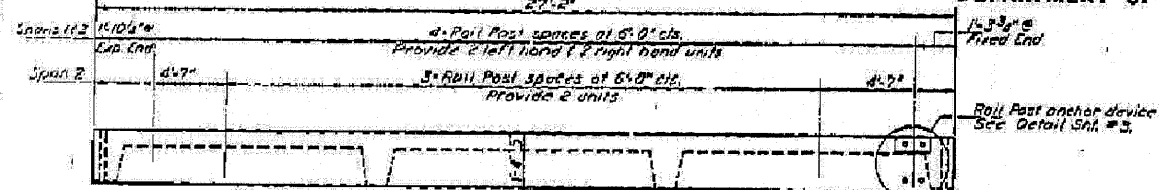
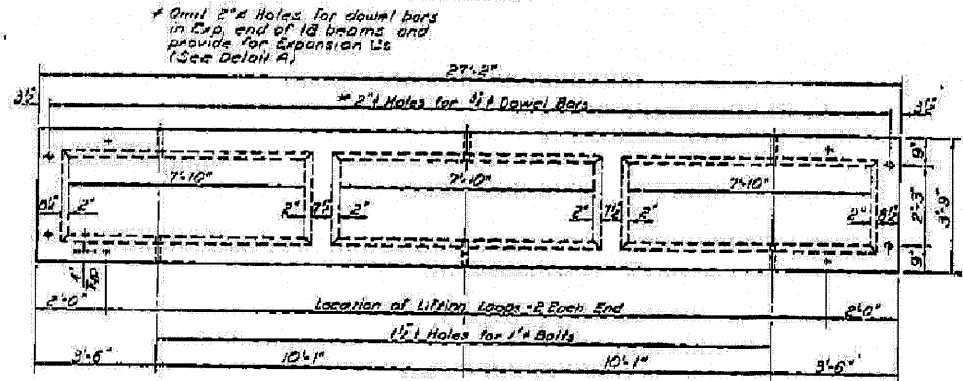


STATE OF ILLINOIS  
DEPARTMENT OF TRANSPORTATION

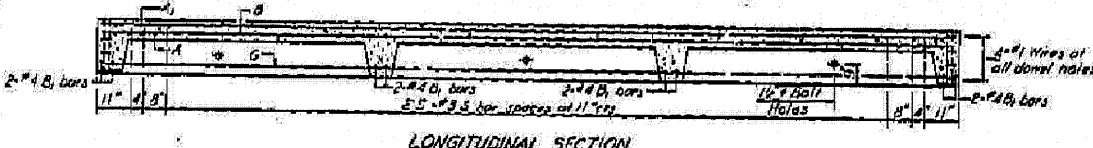
PROJECT NO.	SECTION	COUNTY	TOTAL SHEETS	SHEET NO.
159-89	118 BR	IROQUOIS	42	31



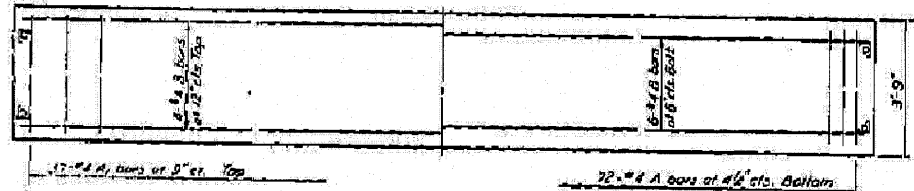
ELEVATION



PLAN OF ONE UNIT



LONGITUDINAL SECTION



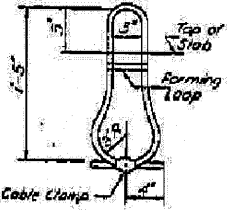
SLAB REINFORCEMENT

DESIGNED	SAW
CHECKED	DAZ
DRAWN	SAW
CHECKED	DAZ

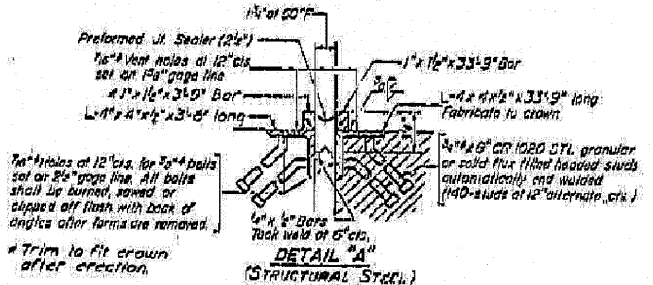
DESIGNED: SAW  
CHECKED: DAZ  
DRAWN: SAW  
CHECKED: DAZ

STRESSES  
12 = 4,500 psi  
16 = 1,000 psi  
18 = 20,000 psi  
n = 8

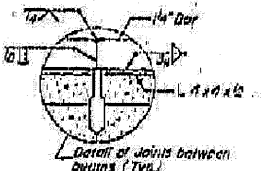
LOADING HS-20



LIFTING LOOP DETAIL

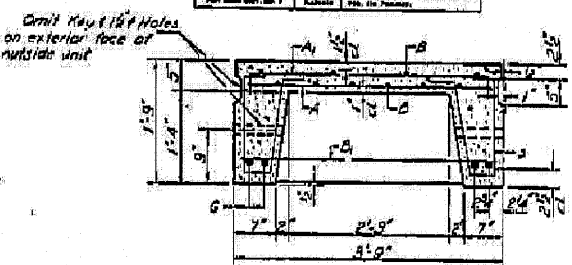


DETAIL "A"  
(STRUCTURAL STEEL)



Detail of joint between beams (Typ.)

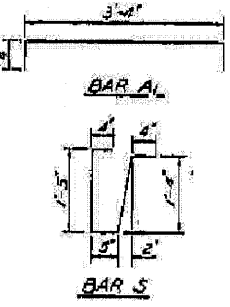
PREFORMED JOINT SEALER (2 1/2")



SECTION THRU PRECAST UNIT

BAR LIST - ONE UNIT

Bar No.	Size	Length	Splice
A	#4	35'-9"	
A1	#4	6'-0"	
B	#4	25'-0"	
B1	#4	3'-0"	
C	#11	25'-9"	
S	#3	3'-10"	1"

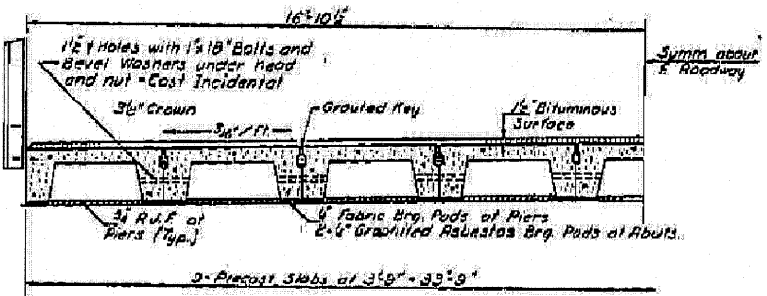


NOTES

Unless otherwise approved by the Engineer, lifting loops shall be 1/2" 6x18 class wire rope with fiber core and shall have a minimum ultimate strength of 18,700 lbs. Loops shall be burned off after slab has been erected. Holes shall be drilled and anchor dowels grouted in place. Cost of reinforcement and accessories cast into the slab unit, bearing pads, furnishing, drilling, for placing and grouting anchor dowels is included in Unit bid price for "Precast Concrete Bridge Slab." Longitudinal shear keys shall be packed with a very dry mix of 2:1 sand and R.C. mortar. The transverse tie bolts, nuts and washers shall be hot-dipped galvanized in accordance with AASHTO Designation M232. End of beams shall be aligned at the expansion joints. Any linear variation in the beam lengths shall be placed at the fixed joint.

BILL OF MATERIAL

Item	Unit	Quantity
Precast Concrete Bridge Slab	Sq. Ft.	2751
Removal of Existing Structure	Each	1



HALF CROSS SECTION

SUPERSTRUCTURE  
S.B.I. RT. 116 - SEC. 118X-BR  
IROQUOIS COUNTY  
STA. 163+53.00

FILE NAME = ...ND366861-SHT-Existing Bridge Plans.dgn  
PLOT SCALE = 5/8" = 1'-0"  
PLOT DATE = 7/29/2010

USER NAME = SAW	DESIGNED - RAC	REVISED -
DESIGNED - RAC	DRAWN - SAW	REVISED -
CHECKED - DAZ	CHECKED - DAZ	REVISED -
DATE - 07/30/10	DATE - 07/30/10	REVISED -

STATE OF ILLINOIS  
DEPARTMENT OF TRANSPORTATION



Zroka Engineering, P.C.  
4216 North Hermitage  
Chicago, IL 60613

EXISTING BRIDGE PLANS  
FOR INFORMATION ONLY

F.A. RTE.	SECTION	COUNTY	TOTAL SHEETS	SHEET NO.
681	118 BR	IROQUOIS	42	31
			CONTRACT NO. 66681	
ILLINOIS FED. AID PROJECT				

SCALE: 1" = 50' SHEET NO. 31 OF 42 SHEETS STA. 159+89 TO STA. 167+17