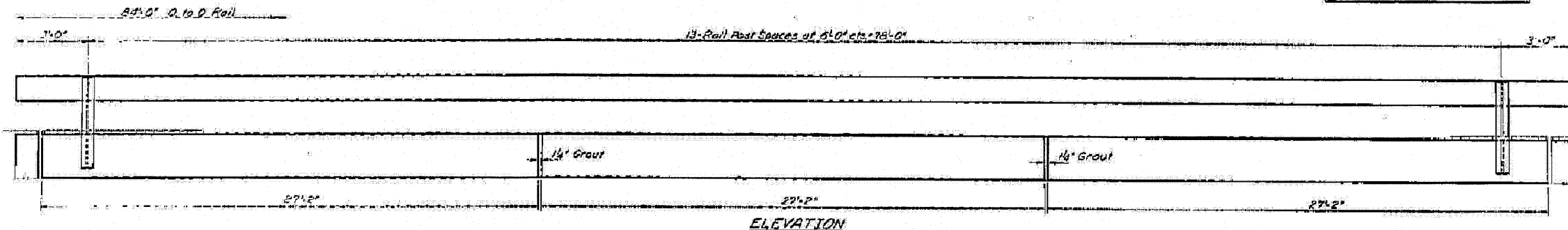
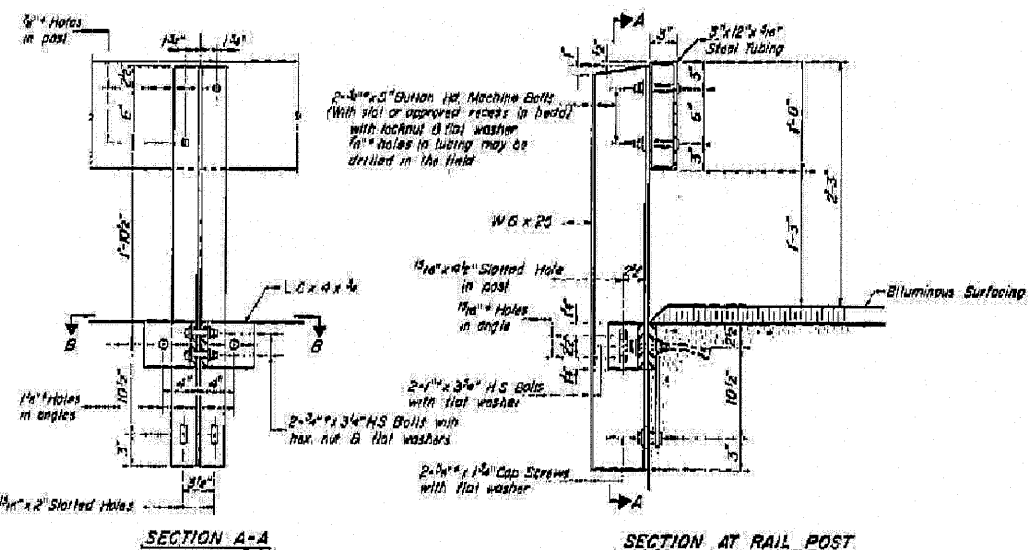


STATE OF ILLINOIS  
DEPARTMENT OF TRANSPORTATION

PROJECT NO.	SECTION	DATE	SHEET NO.	TOTAL SHEETS
13-118-BR	118 BR	7/29/2010	32	42

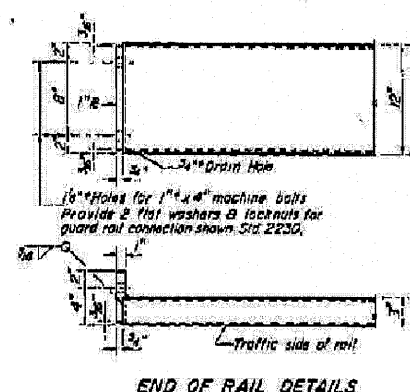


ELEVATION



SECTION A-A

SECTION AT RAIL POST



END OF RAIL DETAILS

**NOTES**

Hollow structural steel tubing shall conform to the requirements of ASTM designation A-500 Grade B or A-501 Structural Steel Tubing.

All other steel shapes and plates shall conform to the requirements of AASHTO designation M183 except posts shall conform to AASHTO M185.

Bolts, nuts, screws, and washers shall conform to the requirements of ASTM designation A-307 except for high strength bolts, nuts and washers noted which shall conform to ASTM designation A-325.

All bolts, nuts, screws, washers and lock washers shall be galvanized in accordance with AASHTO designation M232E.

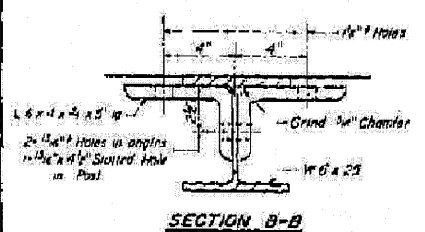
All posts, railing, rail splices, anchor devices and angles shall be galvanized after shop fabrication in accordance with AASHTO M111 and ASTM A-302. Galvanized rail shall not be painted.

Railing shall be in accordance with Section 709 of the Standard Specifications, except as noted, and shall be paid for at the contract unit price per lineal foot for STEEL RAILING, TYPE S.

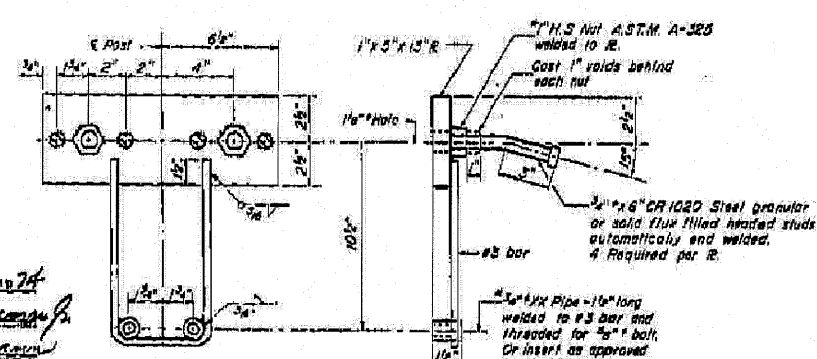
All end drilled holes shall be coated with an approved zinc rich paint before erection.

The lower portion of the post flange in contact with concrete shall receive two coats of asphalt paint conforming to Section 714.06 Type B or place 1/2" fabric bearing pad between the post and concrete.

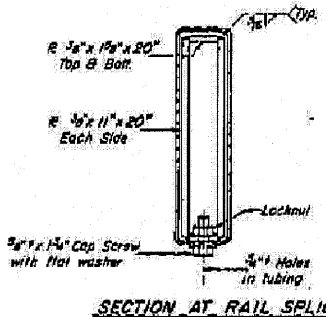
The 1/2" high strength bolts used to connect the 6" x 4" x 1/2" angles to the post shall be tightened in accordance with Article 802.04(p)(3) of the Standard Specifications. The 1" high strength bolts connecting the angles to the concrete shall be tightened to a snug fit and given an additional 1/2 turn.



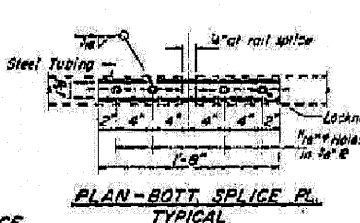
SECTION B-B



ANCHOR DEVICE



SECTION AT RAIL SPLICE



PLAN-BOTT SPLICE PL. TYPICAL

**BILL OF MATERIAL**

Item	Unit	Quantity
Steel Railing, Type S	lin. ft.	165

**TYPE S-STEEL RAILING**  
SBI RT. 118-SEC. 118X-BR  
IROQUOIS COUNTY  
STR. 163+53.00

DESIGNED: [Signature]  
CHECKED: [Signature]  
DRAWN: [Signature]  
CHECKED: [Signature]

EXAMINED: [Signature]  
PASSED: [Signature]  
APPROVED: [Signature]

R-23 R-10-71 (6'-3" Maximum Post Spacing)

\* Threaded areas shall be plugged or blocked off during casting of beam.

FILE NAME = ...D366861-SHT-Existing Bridge Plans.dgn

USER NAME = SAW  
PLOT SCALE = 50.00000 ' / IN.  
PLOT DATE = 7/29/2010

DESIGNED - RAC  
DRAWN - SAW  
CHECKED - DAZ  
DATE - 07/30/10

REVISED -  
REVISED -  
REVISED -  
REVISED -

STATE OF ILLINOIS  
DEPARTMENT OF TRANSPORTATION

**ZROKA**  
engineering  
Zroka Engineering, P.C.  
4216 North Hermitage  
Chicago, IL 60613

EXISTING BRIDGE PLANS  
FOR INFORMATION ONLY

F.A. RTE.	SECTION	COUNTY	TOTAL SHEETS	SHEET NO.
681	118 BR	IROQUOIS	42	32
			CONTRACT NO. 66861	
ILLINOIS FED. AID PROJECT				

SCALE: 1" = 50'  
SHEET NO. 32 OF 42 SHEETS  
STA. 159+89 TO STA. 167+17