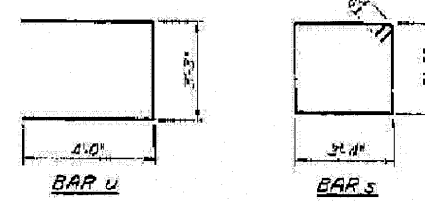
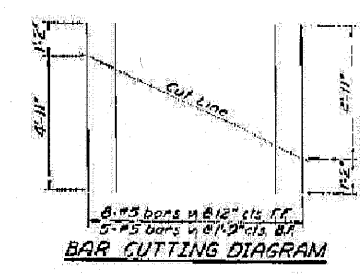
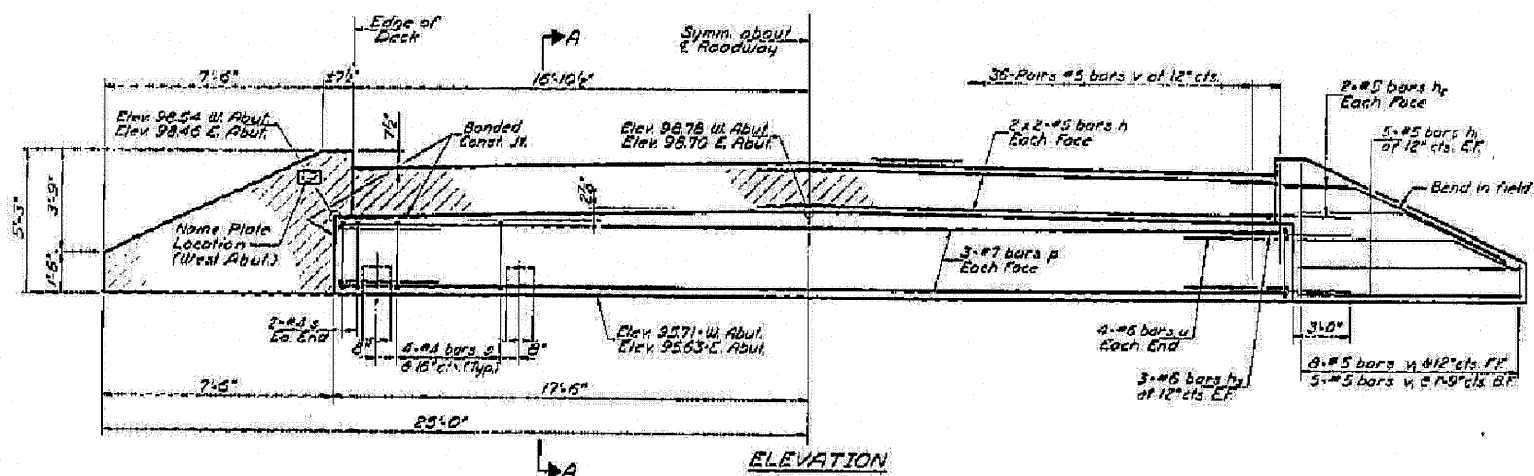
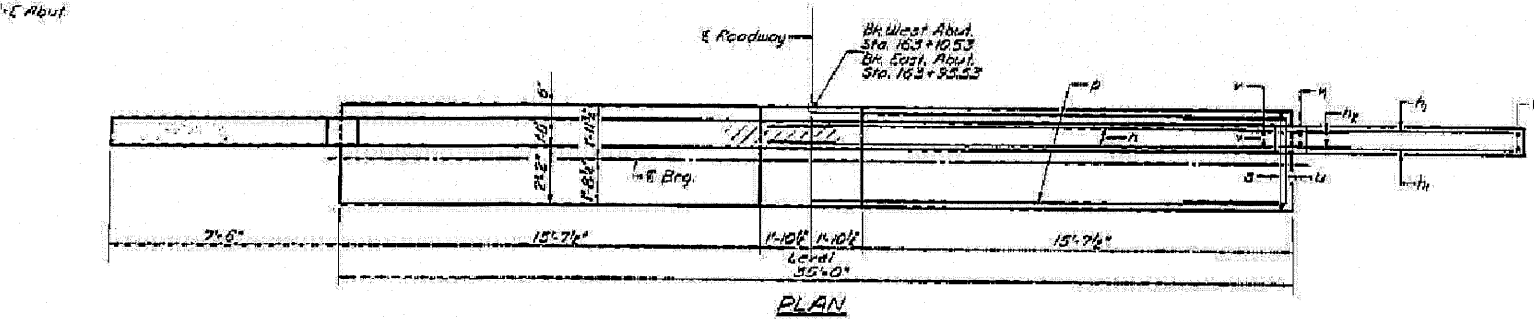
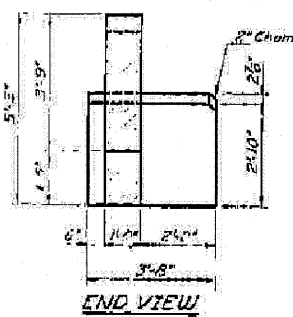
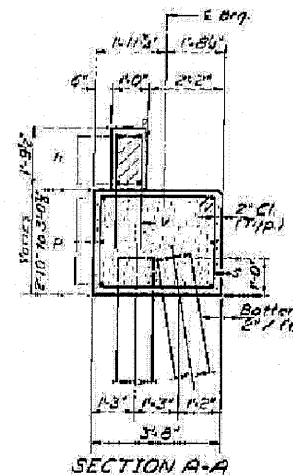


STATE OF ILLINOIS  
DEPARTMENT OF TRANSPORTATION

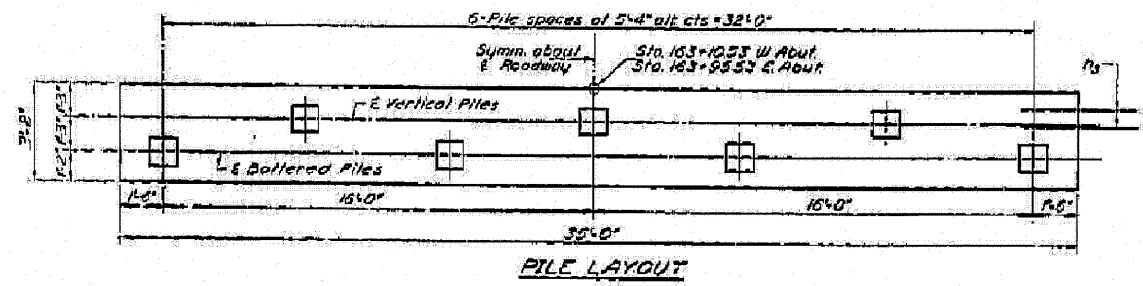
DATE	BY	CHKD	APP'D	SHEET NO.
10/20/10	DAZ	DAZ	DAZ	8
PROJECT				66861
SHEET TITLE				EXISTING BRIDGE PLANS FOR INFORMATION ONLY

**PILE DATA**  
TYPE: Concrete  
CAPACITY: 25 TONS  
EST. LENGTH: 27' W/ Abut, 35' E Abut  
No. Req'd: 14



**TWO ABUTMENTS  
BILL OF MATERIAL**

Bar	No.	Size	Length	Shape
h	16	#5	17'-6"	—
h1	40	#5	7'-2"	—
h2	16	#5	5'-0"	—
h3	24	#6	5'-0"	—
p	12	#7	34'-6"	—
s	56	#4	12'-5"	□
u	16	#6	11'-3"	—
v	14	#5	2'-9"	—
w	26	#5	6'-1"	—
Class 1 Concrete		Cu Yds	36.0	
Reinforcement Bars		Lbs	3080	
Concrete Piles		Lin Ft	439	



NOTES:  
Hatched areas to be poured after beams are in place.  
All edges shall have standard 1/4" chamfers except as noted.

DESIGNED: RAC  
CHECKED: [Signature]  
DRAWN: [Signature]  
CHECKED: [Signature]  
REVISIONS:  
1. 08/28/10 [Signature]  
2. [Signature]  
3. [Signature]

**ABUTMENT DETAILS**  
S.B.I. RT. 116 - SEC. 118X-BR  
IROQUOIS COUNTY  
STA. 163+53.00