

CP 40
 NORTHING: 1,406,654.106
 EASTING: 2,517,313.857
 ELEV.: 595.707
 STA.: 767+86
 OFF.: 0'

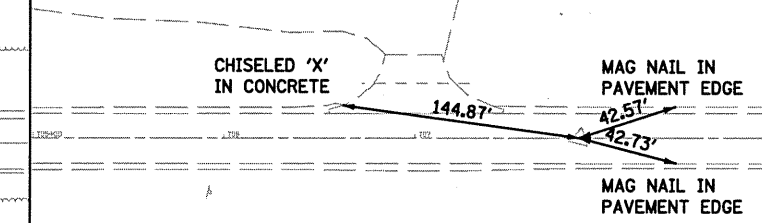
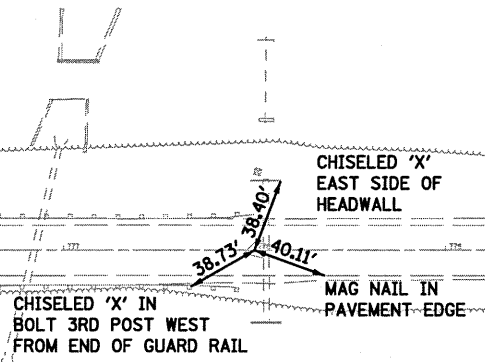
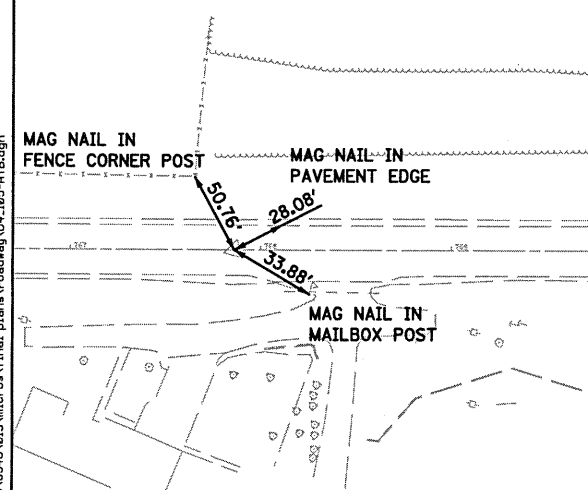
CP 50
 NORTHING: 1,406,911.700
 EASTING: 2,518,294.391
 ELEV.: 614.031
 STA.: 778+00
 OFF.: 0'

CP 60
 NORTHING: 1,407,161.999
 EASTING: 2,519,248.181
 ELEV.: 622.161
 STA.: 787+86
 OFF.: 0'

BM G162:
 FOUND BM SET IN CONCRETE POST SET IN NORTHEAST QUADRANT OF INT. N. HOFFMAN AVENUE AND STATE HIGHWAY 9, ±57' NORTH OF CL HIGHWAY 9 AND ±106' EAST OF CL OF NORTH HOFFMAN AVENUE.
 EL. 591.41

BM CB*1:
 FOUND CHISELED SQUARE IN SOUTHEAST ABUTMENT OF HOFFMAN AVENUE BRIDGE.
 EL. 585.61

BM CB*2:
 FOUND CHISELED SQUARE IN SOUTHWEST ABUTMENT OF S.N. 090-0064.
 EL. 598.63



FILE NAME = m:\p1\6388-6389\6389\6389\m\plan\roadway\04_105-ATB.dgn

STRAND ASSOCIATES, INC.
 ENGINEERS
 1170 SOUTH HOUBOLT ROAD
 JOLIET, ILLINOIS 60431
 (815) 744-4200

USER NAME = rjend	DESIGNED VLF	REVISED -
PLOT SCALE = 100.0000' / IN.	DRAWN VLF	REVISED -
PLOT DATE = 7/9/2010	CHECKED AJS	REVISED -
	DATE 3/31/10	REVISED -

STATE OF ILLINOIS
 DEPARTMENT OF TRANSPORTATION

ALIGNMENTS AND BENCHMARKS

SCALE: AS SHOWN SHEET NO. OF SHEETS STA. 758+00 TO STA. 788+00

F.A.P. RTE.	SECTION	COUNTY	TOTAL SHEETS	SHEET NO.
693	(119 BR-2)BR	TAZEWELL	65	7
FED. ROAD DIST. NO. 4 [ILLINOIS] FED. AID PROJECT				

CONTRACT NO. 68660