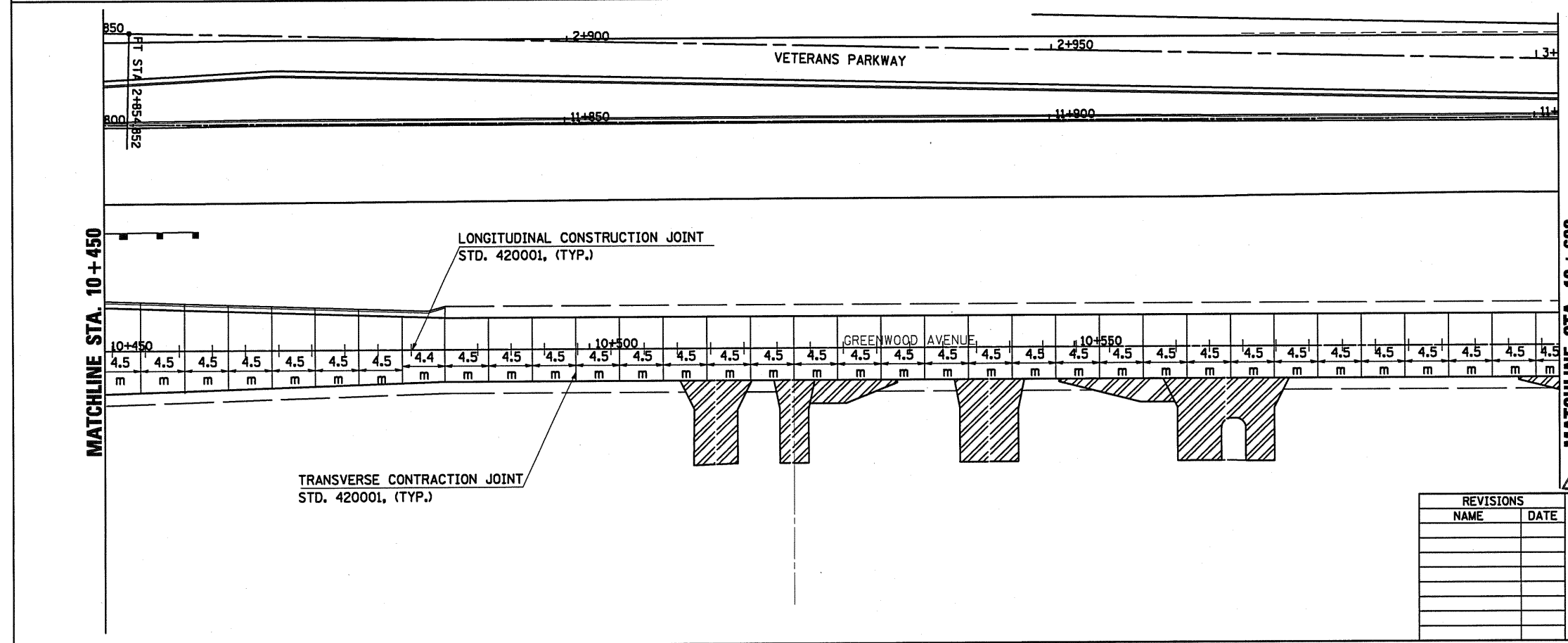
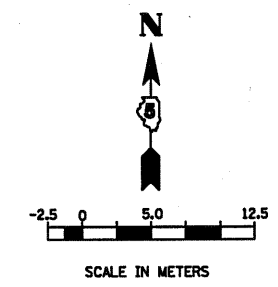
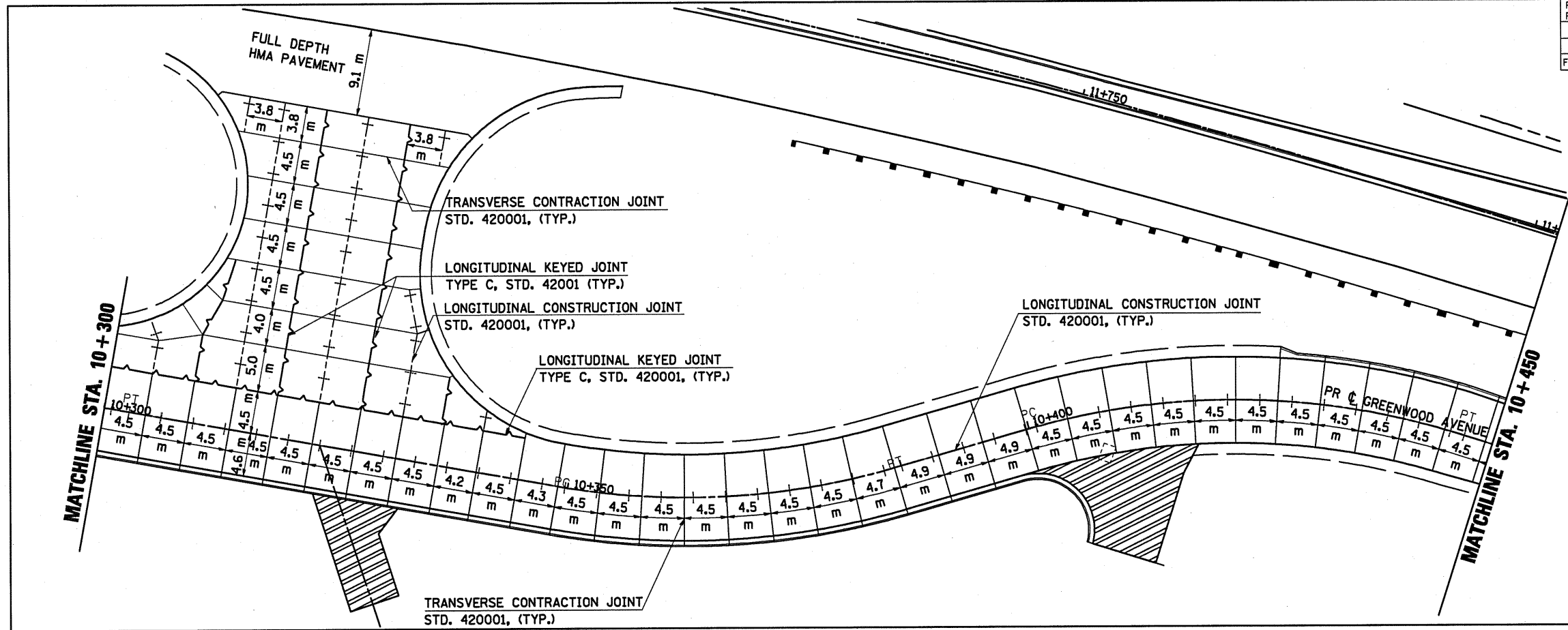
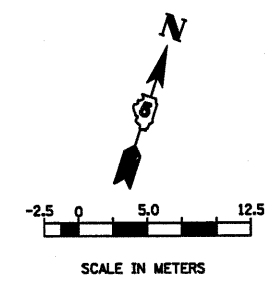


F.A.P. RTE.	SECTION	COUNTY	TOTAL SHEETS	SHEET NO.
704	(1)N & TS-1	McLEAN	497	244
STA. 10+300.000		TO STA. 10+600.000		
FED. ROAD DIST. NO.		ILLINOIS	FED. AID PROJECT	
CONTRACT NO. 70514				



MATCHLINE STA. 10+600

REVISIONS
 NAME DATE
 ILLINOIS DEPARTMENT OF TRANSPORTATION

PAVEMENT JOINTING PLAN
 GREENWOOD AVENUE (EAST)
 DRAWN BY SAM
 CHECKED BY PMH
 DATE 05-27-09

GREENWOOD AVENUE PAVEMENT JOINTING PLAN STA. 10+300.000 TO STA. 10+600.000