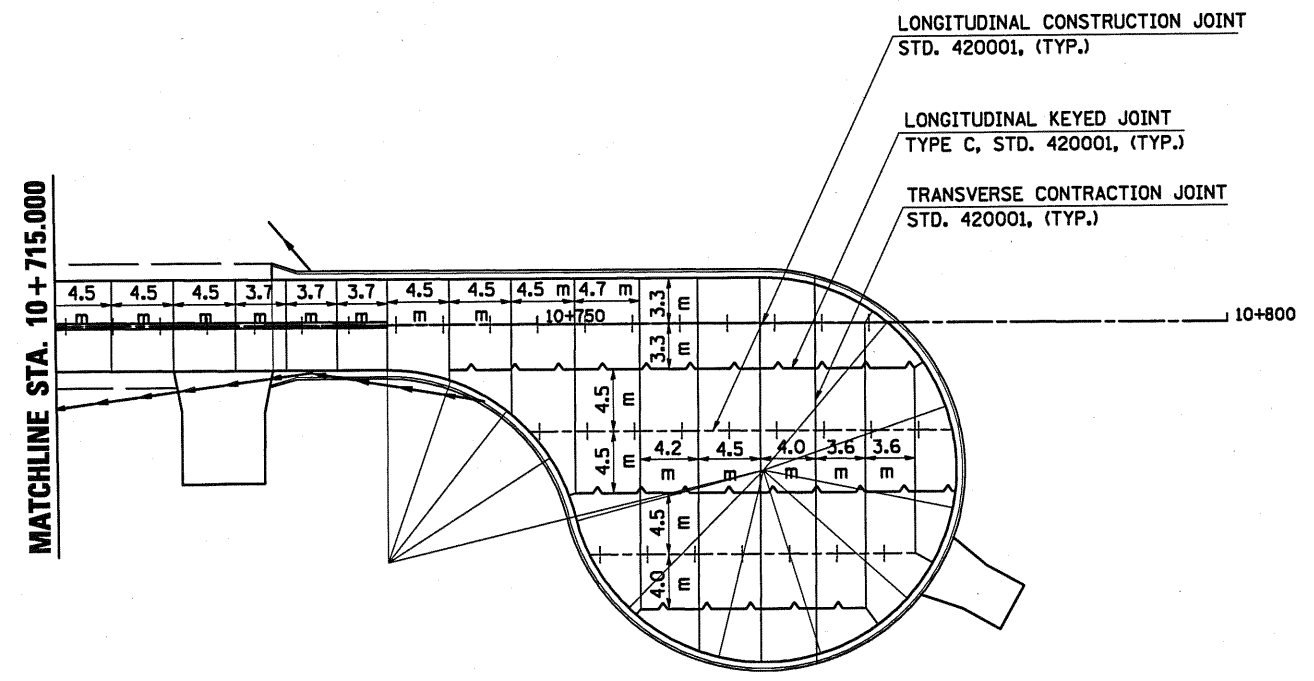
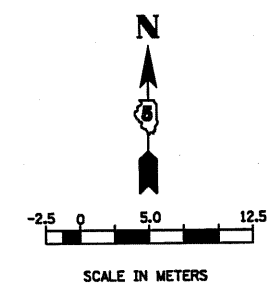


F.A.P. RTE.	SECTION	COUNTY	TOTAL SHEETS	SHEET NO.
704	(LN & TS-1)	McLEAN	497	246
STA. 10+715.000		TO STA. 10+800.000		
FED. ROAD DIST. NO.	ILLINOIS	FED. AID PROJECT		
CONTRACT NO. 70514				



REVISIONS

NAME	DATE

REVISIED SHEET 10/25/10

ILLINOIS DEPARTMENT OF TRANSPORTATION

PAVEMENT JOINTING PLAN
GREENWOOD AVENUE (EAST)

DRAWN BY SAM
CHECKED BY PMH
DATE 05-27-09