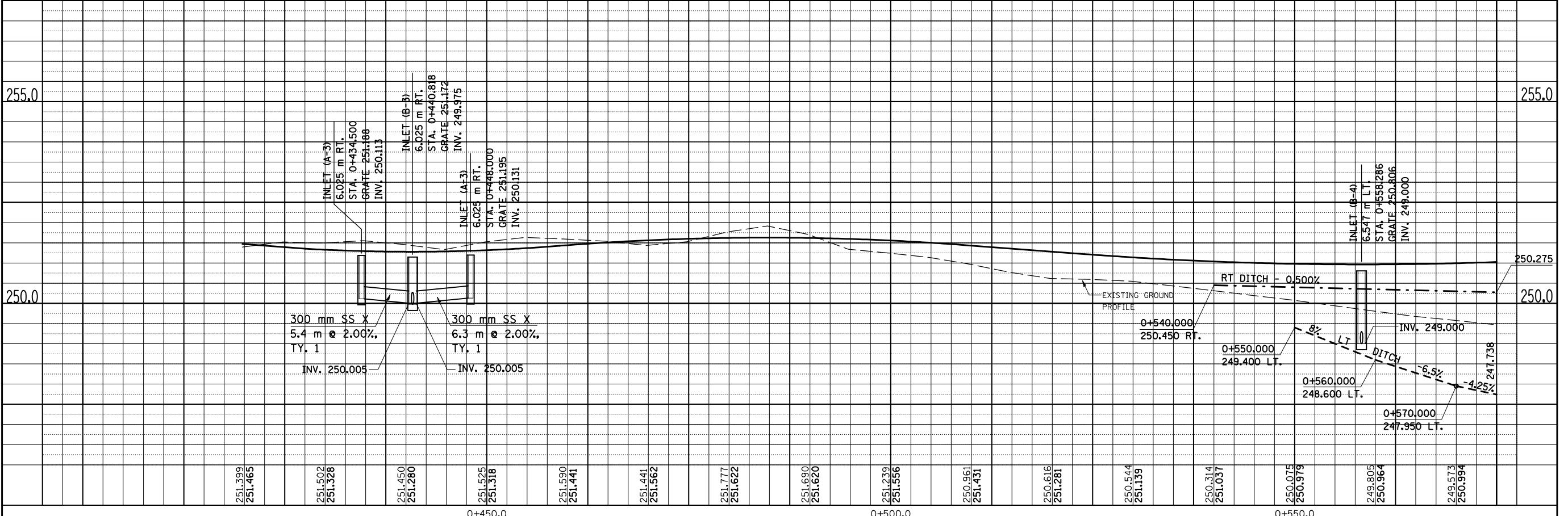
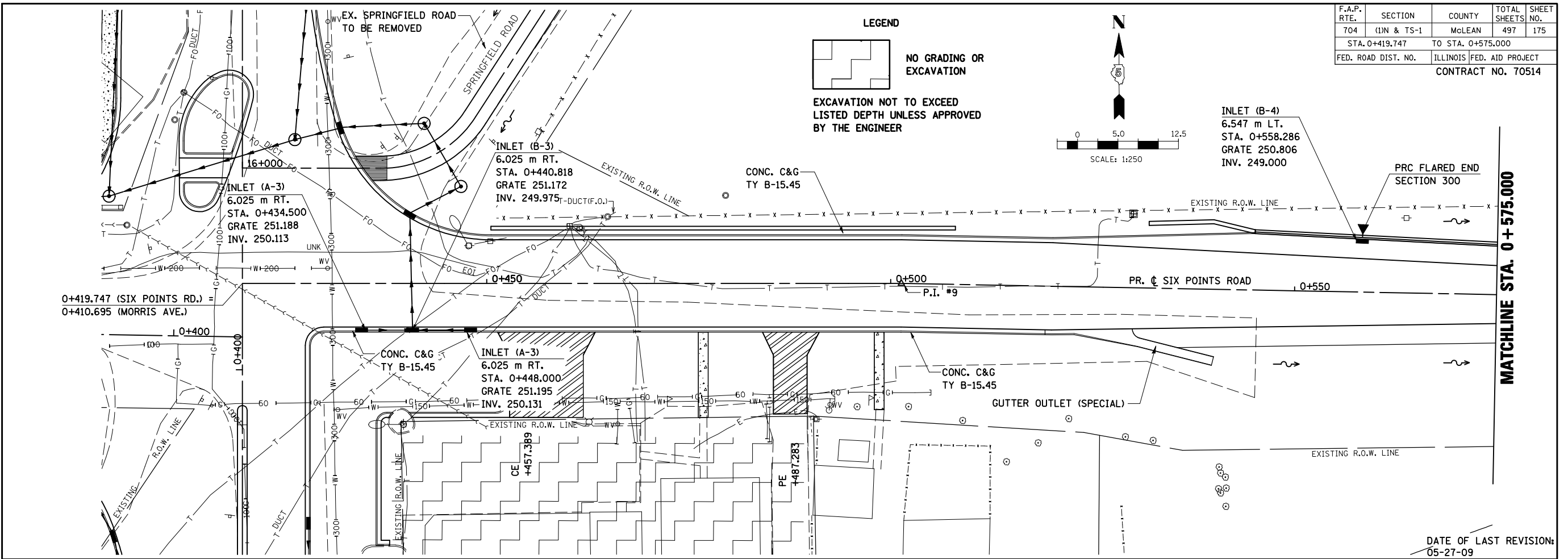


F.A.P. RTE.	SECTION	COUNTY	TOTAL SHEETS	SHEET NO.
704	(1)N & TS-1	McLEAN	497	175
STA. 0+419.747 TO STA. 0+575.000		ILLINOIS FED. AID PROJECT		
FED. ROAD DIST. NO.		CONTRACT NO. 70514		

BY	DATE
FINAL SURVEYED	
SURVEY PLOTTED	
NOTE BOOK TEMPLATE	
AREAS CHECKED	
NO.	

BY	DATE
ORIGINAL SURVEYED	
SURVEY PLOTTED	
NOTE BOOK TEMPLATE	
AREAS CHECKED	
NO.	



SIX POINTS ROAD, DRAINAGE & UTILITIES SHEETS, STA. 0+419.747 TO STA. 0+575.000

DATE OF LAST REVISION:  
05-27-09

MATCHLINE STA. 0+575.000