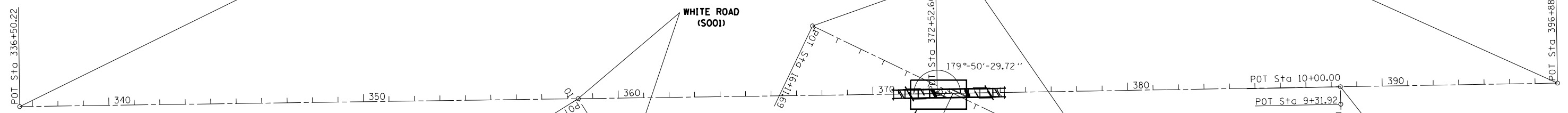


I-55 FRONTAGE ROAD (E001)

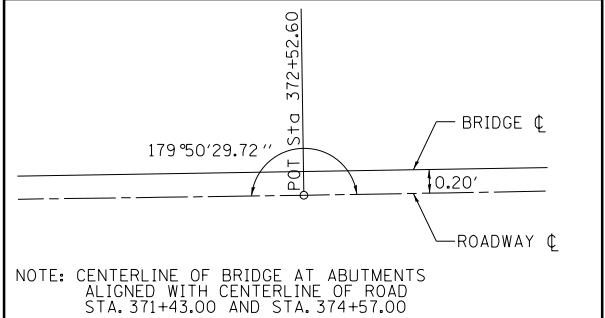
ILLINOIS CENTRAL RAILROAD (R001)

WHITE ROAD (S001)

JUDD STREET (S002)



EXIST. CURVE 6031
 PI STA. = 8+47.17
 $\Delta = 57^\circ 36' 15''$ (RT)
 $D = 35^\circ 02' 18''$
 $R = 163.52'$
 $T = 89.91'$
 $L = 164.40'$
 $E = 23.09'$
 P.C. STA. = 7+57.26
 P.T. STA. = 9+21.67



INSET

"GLENARM 1960" - STANDARD BRASS TABLET IN CONCRETE POST, FLUSH W/GROUND 0.5 FEET SOUTH OF METAL WITNESS POST. TO REACH MONUMENT GO 0.85 MILES EAST ON OLD ROUTE 66 FROM THE INTERSECTION OF CENTER OF GLENARM OVERPASS BRIDGE OVER I-55, MONUMENT IS ON NORTH SIDE OF ROAD.

BM EB*1 - CHISELED SQUARE ON TOP OF CONCRETE HEADWALL, TO REACH BENCHMARK GO 0.78 MILES EAST ON OLD ROUTE 66 FROM THE INTERSECTION OF CENTER OF GLENARM OVERPASS BRIDGE AND I-55 TO BURTLE LANE, THEN 0.1 MILES WESTERLY ALONG BURTLE LANE. BENCHMARK IS ON EAST HEADWALL OF CULVERT ON THE SOUTH SIDE OF ROAD. (ELEVATION=601.621)

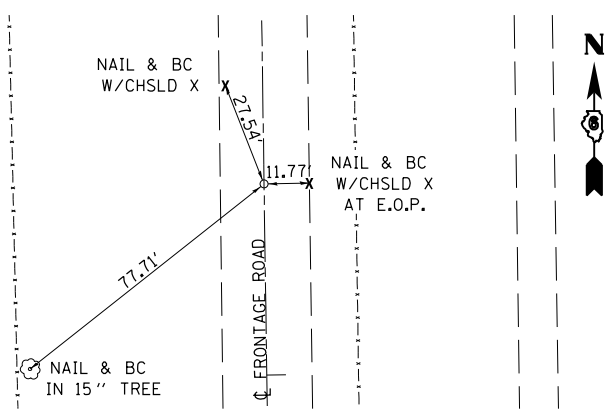
BM EB*2 - PK NAIL WITH BOTTLE CAP TO REACH BENCHMARK GO 0.78 MILES EAST ON OLD ROUTE 66 FROM THE INTERSECTION OF CENTER OF GLENARM OVERPASS BRIDGE AND I-55 TO BURTLE LANE, THEN 0.3 MILES WESTERLY ALONG BURTLE LANE. BENCHMARK IS ON NORTH EDGE OF PAVEMENT, WHERE ROAD DEAD ENDS. (ELEVATION=604.223)

BM EB*3 - CHISELED SQUARE ON TOP OF OLD CONCRETE FOUNDATION, TO REACH BENCHMARK GO 0.85 MILES NORTH FROM THE INTERSECTION OF OLD ROUTE 66 AND WEST FRONTAGE ROAD. BENCHMARK IS ON WEST SIDE OF ROAD. (ELEVATION=602.805)

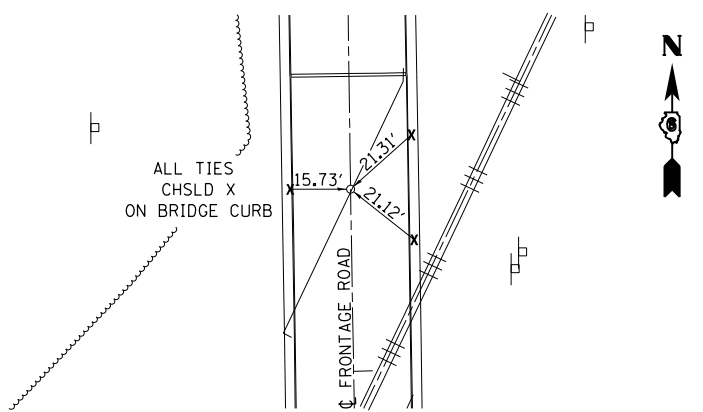
BM EB*4 - CHISELED SQUARE ON TOP CENTER OF S.E. WINGWALL STR# 084-0005, (RAILROAD OVERPASS BRIDGE) TO REACH BENCHMARK GO 1.03 MILES NORTH FROM THE INTERSECTION OF OLD ROUTE 66 AND WEST FRONTAGE ROAD. (ELEVATION=627.136)

BM EB*7 - CHISELED SQUARE ON TOP S.W. CORNER OF CONCRETE UTILITY VAULT, TO REACH BENCHMARK GO 1.3 MILES NORTH FROM THE INTERSECTION OF OLD ROUTE 66 AND WEST FRONTAGE ROAD, BENCHMARK IS ON WEST SIDE OF ROAD, ± 75' SOUTH OF WHITE ROAD. (ELEVATION=600.240)

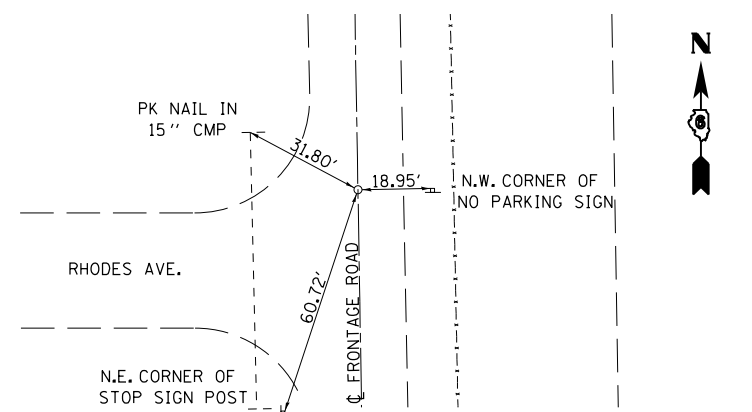
BM EB*8 - CHISELED SQUARE ON TOP CENTER OF WEST HEADWALL, 2' x 2' CONCRETE BOX CULVERT, TO REACH BENCHMARK GO 1.5 MILES NORTH FROM THE INTERSECTION OF OLD ROUTE 66 AND WEST FRONTAGE ROAD. (ELEVATION=597.253)



P.O.T. 336 + 50.22
PK NAIL W/BC



P.O.T. 372 + 52.60
STARDRILL HOLE IN BRIDGE DECK



P.O.T. 396 + 88.03
PK NAIL W/BC

DECATUR, ILLINOIS

ENGINEERS - CONSULTANTS

BLANK, WESSELINK, COOK & ASSOCIATES

FILE NAME =	USER NAME = laughl1nr1	DESIGNED - CWG	REVISED -
ei:\pwork\pwork\dot\laughl1nr1\0232385\0672692-sh1-ATB.dgn		DRAWN - BWC	REVISED -
		CHECKED - RMD	REVISED -
		DATE - 02/09/09	REVISED -

STATE OF ILLINOIS
 DEPARTMENT OF TRANSPORTATION

ALIGNMENT, TIES, & BENCHMARKS

SCALE: SHEET NO. 1 OF 1 SHEETS STA. TO STA.

F.A.U. RTE.	SECTION	COUNTY	TOTAL SHEETS	SHEET NO.
8159	110X-3VB-4	SANGAMON	78	11
FED. ROAD DIST. NO.			ILLINOIS FED. AID PROJECT	
			CONTRACT NO. 72692	