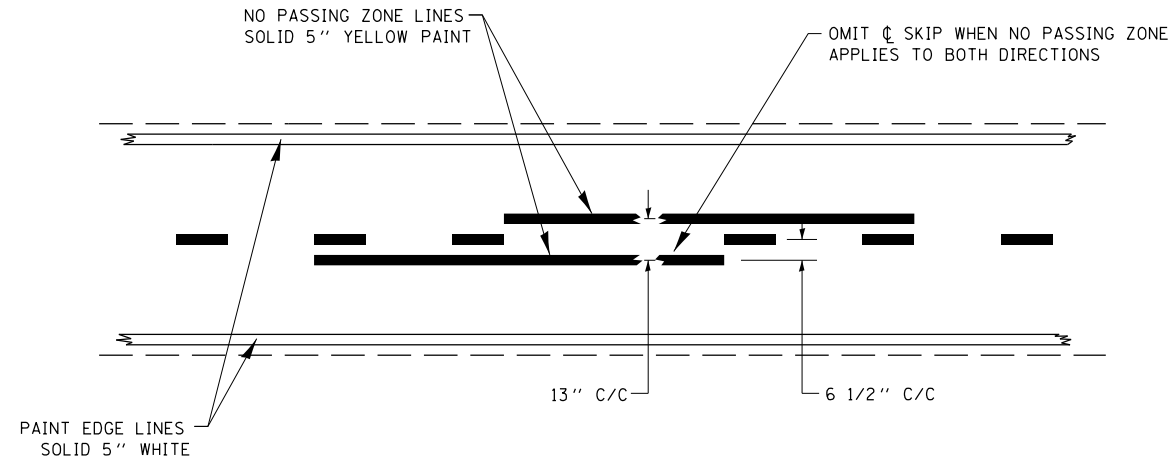
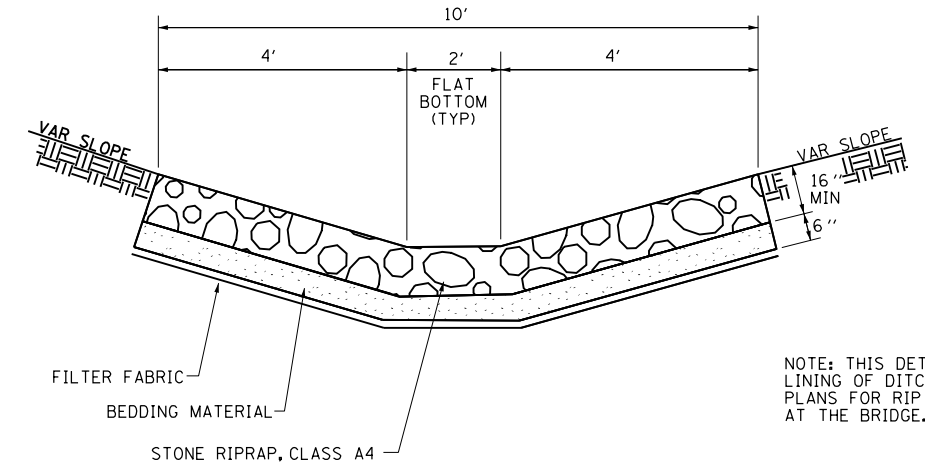


"NO PASSING ZONES" ARE TO BE FIELD VERIFIED BY THE BUREAU OF OPERATIONS.



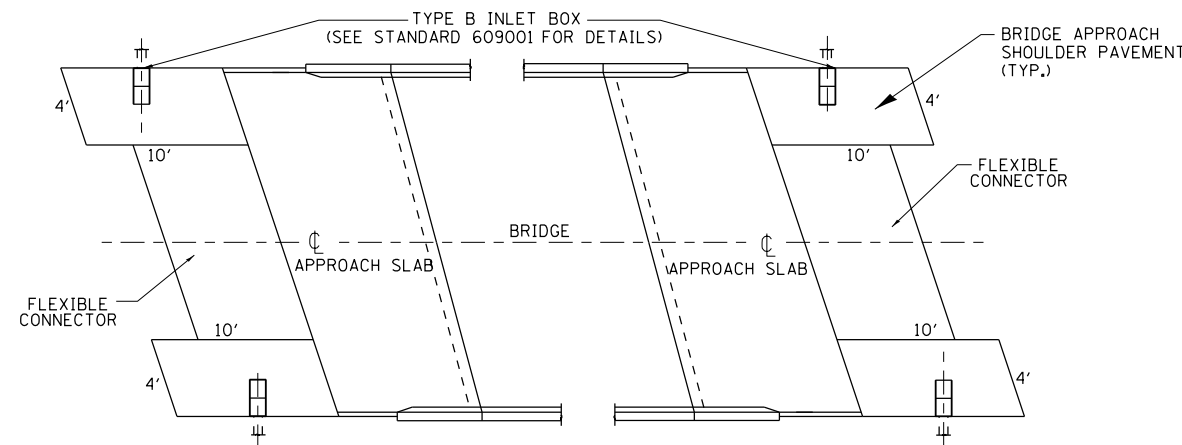
**PAVEMENT MARKING**



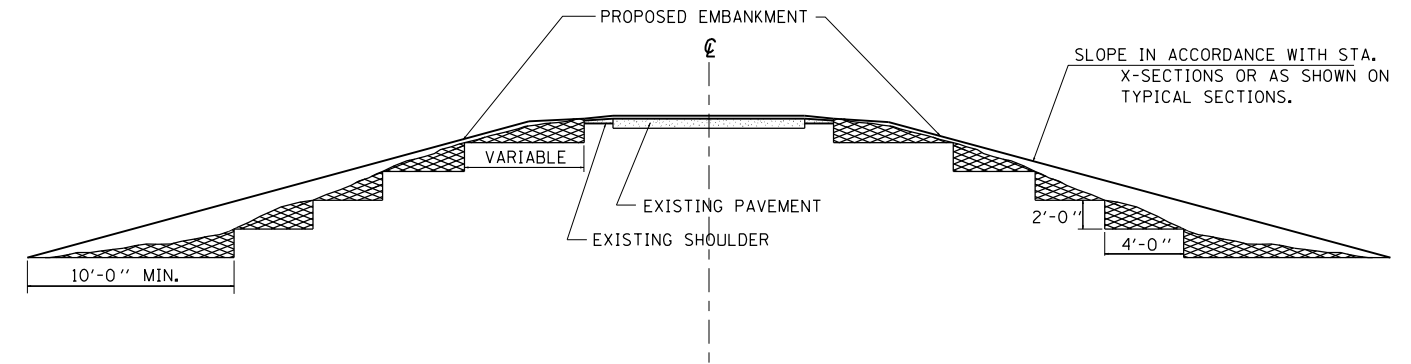
NOTE: THIS DETAIL IS FOR RIP RAP LINING OF DITCHES. SEE BRIDGE PLANS FOR RIP RAP PROTECTION AT THE BRIDGE.

**DETAIL OF STONE RIPRAP, CLASS A4**

APPROXIMATE STATION 9+87 TO 10+00



**APPROACH SHOULDER PAVEMENT & DRAIN**



MATERIAL TO BE REMOVED AND REPLACED IN THE EMBANKMENT IN ACCORDANCE WITH ART. 205.04 OF THE STANDARD SPECIFICATION. COST TO BE INCLUDED IN THE VARIOUS ITEMS OF EXCAVATION AND NO ADDITIONAL COMPENSATION WILL BE ALLOWED BECAUSE OF THIS WORK.

**TYPICAL CROSS SECTION SHOWING STEP CONSTRUCTION ON EXISTING FILL**

FILE NAME =	USER NAME = laughlrm1	DESIGNED - CWG	REVISED -
ei:\pwork\pwork\laughlrm1\02232385\0672692-shd-details.dgn		DRAWN - BWC	REVISED -
	PLOT SCALE = 48.0000' / in.	CHECKED - RMD	REVISED -
	PLOT DATE = Aug-12-2010 11:50:23AM	DATE - 02/09/09	REVISED -

STATE OF ILLINOIS  
DEPARTMENT OF TRANSPORTATION

ROADWAY DETAILS

SCALE: SHEET NO. 1 OF 3 SHEETS STA. TO STA.

F.A.U. RTE.	SECTION	COUNTY	TOTAL SHEETS	SHEET NO.
8159	110X-3VB-4	SANGAMON	78	22
FED. ROAD DIST. NO. ILLINOIS FED. AID PROJECT			CONTRACT NO. 72692	