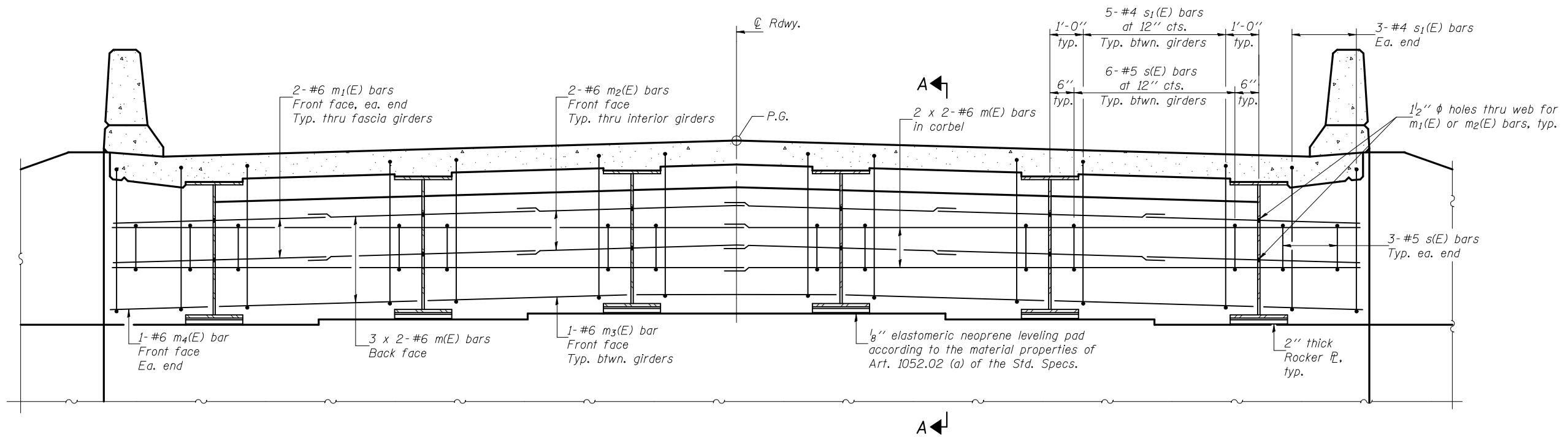
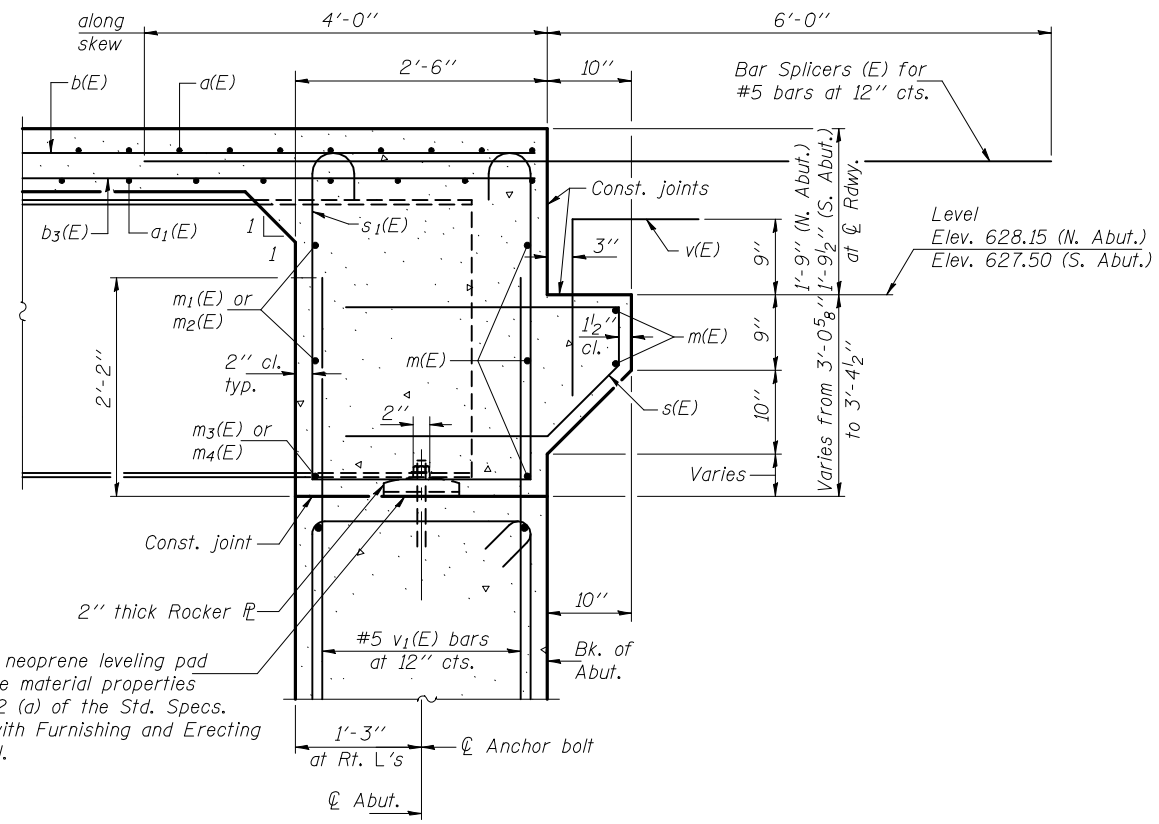


STATE OF ILLINOIS  
DEPARTMENT OF TRANSPORTATION



**DIAPHRAGM ELEVATION AT SOUTH ABUTMENT**  
(Looking South - North abutment similar)

Notes: Reinforcement bars in diaphragm are billed with superstructure on sheet 11 of 27.  
Concrete in diaphragm is included with Concrete Superstructure on sheet 11 of 27.  
For details of bars s(E) & s1(E) see sheet 11 of 27.  
See sheet 16 of 27 for holes thru web for m2(E) bars.  
For bar splicer (E) details see sheet 23 of 27.  
The s(E) & s1(E) bars shall be placed parallel to the girders, spacing for these bars shall be at right angles to the girders.



**SECTION A-A**

**MIN. BAR LAP**  
#6 bar = 3'-10"

DESIGNED	Nicholas R. Barnett
CHECKED	Michael D. Rolape
DRAWN	h.t. duong
CHECKED	NRB/MDR

September 17, 2010  
 EXAMINED *Thomas J. Demagala*  
 ENGINEER OF BRIDGE DESIGN  
 PASSED *Ralph E. Anderson*  
 ENGINEER OF BRIDGES AND STRUCTURES

**DIAPHRAGM DETAILS**  
**STRUCTURE NO. 084-0517**

SHEET NO. 12 27 SHEETS	F.A.U. RTE.	SECTION	COUNTY	TOTAL SHEETS	SHEET NO.
	8159	110X-3VB-4	SANGAMON	78	37
CONTRACT NO. 72692					
ILLINOIS FED. AID PROJECT					