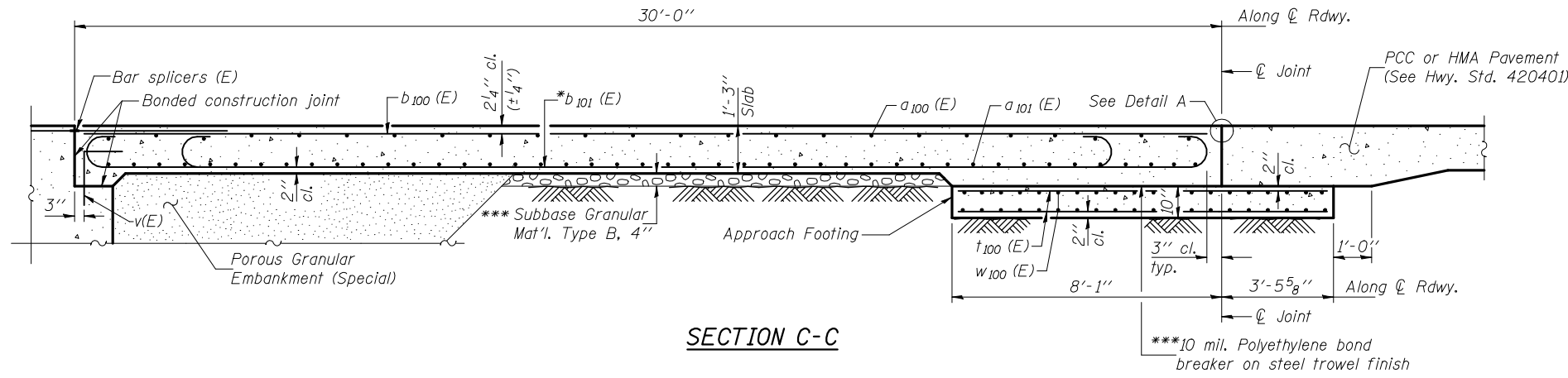
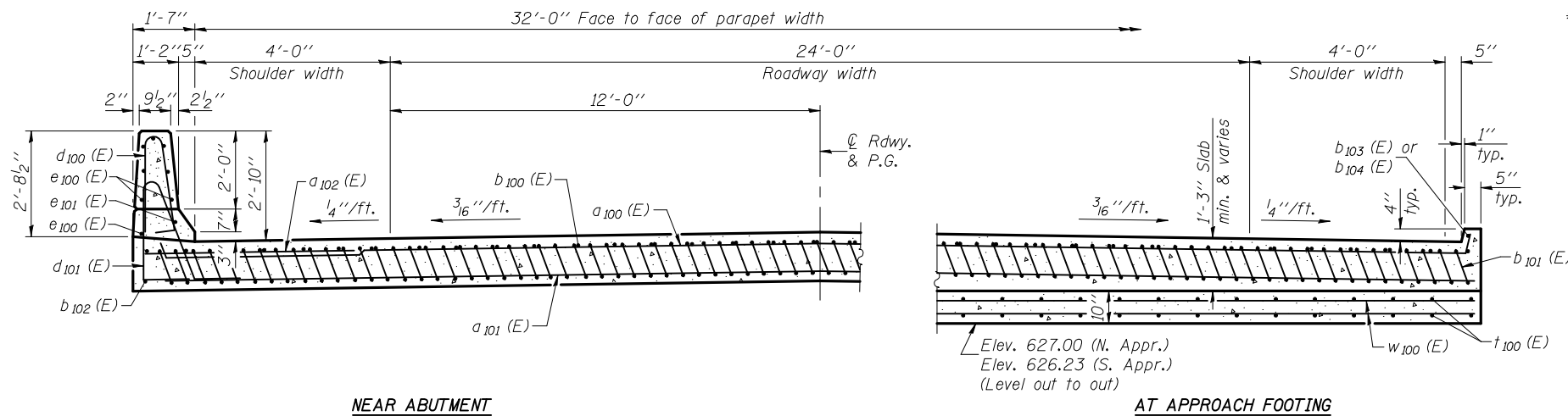


STATE OF ILLINOIS
DEPARTMENT OF TRANSPORTATION

Notes:
See sheet 13 of 27 for Detail A and View B-B.
Approach slab and parapet concrete shall be paid for as Concrete Superstructure.
Approach footing concrete shall be paid for as Concrete Structures.
Reinforcement shall be paid for as Reinforcement Bars, Epoxy Coated.
For v(E) bar details, see sheet 11 of 27.
The approach footing maximum applied service bearing pressure (Qmax) = 2.0 ksf.
For bar splicer details, see sheet 23 of 27.
Cost of excavation for approach footing included with Concrete Structures.
For Porous Granular Embankment (Special) and drainage treatment details, see sheet 2 of 27.
For additional parapet details, see sheet 11 of 27.



SECTION C-C

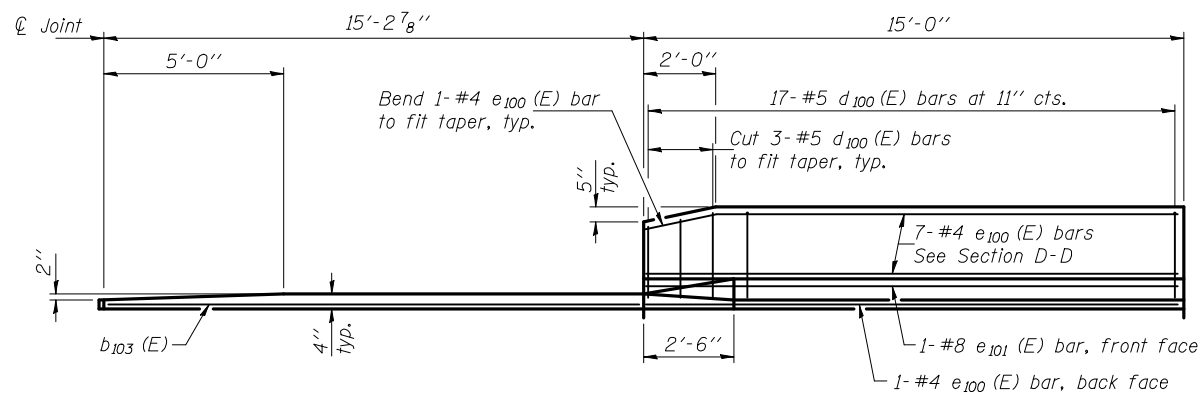


NEAR ABUTMENT

SECTION D-D

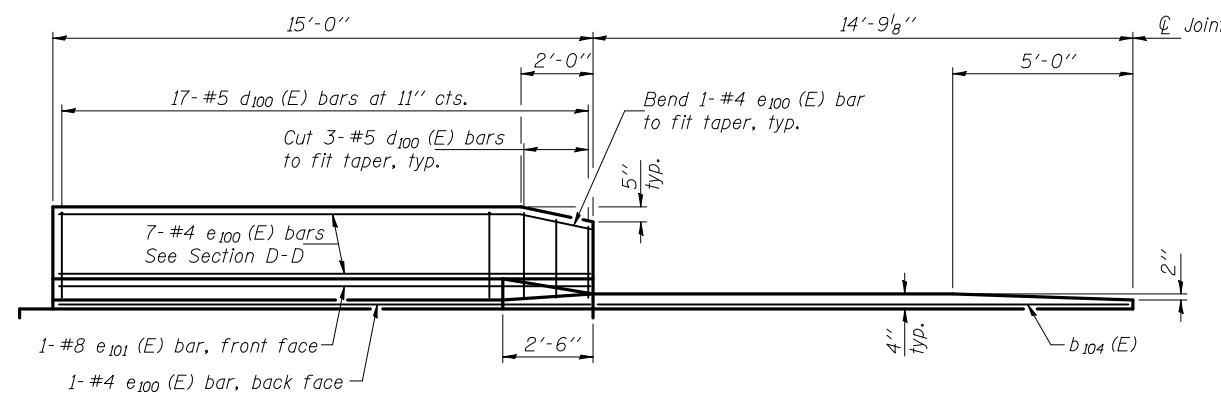
(See Plan for dimensions not shown)

AT APPROACH FOOTING



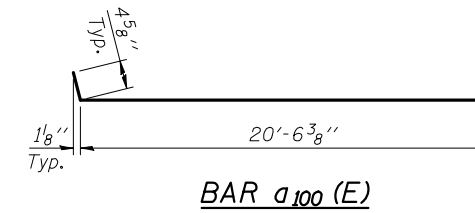
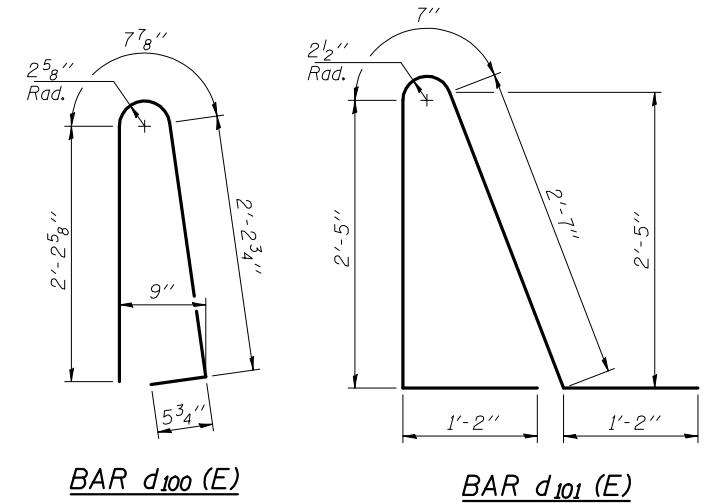
VIEW E-E

(West dimensions at S. Appr.; East dimensions at N. Appr.)
(Dimensions measured along inside of curb)



VIEW G-G

(East dimensions at S. Appr.; West dimensions at N. Appr.)
(Dimensions measured along inside of curb)

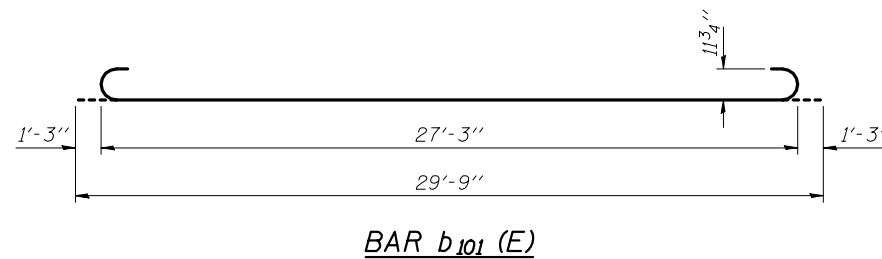


TWO APPROACHES
BILL OF MATERIAL

Bar	No.	Size	Length	Shape
a ₁₀₀ (E)	100	#4	20'-11"	—
a ₁₀₁ (E)	276	#5	15'-1"	—
a ₁₀₂ (E)	48	#6	6'-6"	—
b ₁₀₀ (E)	56	#4	29'-8"	—
b ₁₀₁ (E)	160	#9	29'-9"	U
b ₁₀₂ (E)	4	#4	14'-8"	—
b ₁₀₃ (E)	2	#4	14'-11"	—
b ₁₀₄ (E)	2	#4	14'-4"	—
d ₁₀₀ (E)	68	#5	5'-7"	U
d ₁₀₁ (E)	68	#5	7'-11"	U
e ₁₀₀ (E)	32	#4	14'-8"	—
e ₁₀₁ (E)	4	#8	14'-8"	—
t ₁₀₀ (E)	140	#4	11'-2"	—
w ₁₀₀ (E)	80	#5	21'-0"	—
Concrete Superstructure		Cu. Yd.	110.0	
Concrete Structures		Cu. Yd.	24.1	
Reinforcement Bars, Epoxy Coated		Pound	27800	

DESIGNED Nicholas R. Barnett
CHECKED Michael D. Rolape
DRAWN h.t. duong
CHECKED NRB/MDR

September 17, 2010
EXAMINED Thomas J. Domagalick
PASSED Ralph E. Anderson



BAR b₁₀₁ (E)

BRIDGE APPROACH SLAB DETAILS
STRUCTURE NO. 084-0517

SHEET NO.	F.A.U. RTE.	SECTION	COUNTY	TOTAL SHEETS	SHEET NO.
14	8159	110X-3VB-4	SANGAMON	78	39
CONTRACT NO. 72692					
ILLINOIS FED. AID PROJECT					