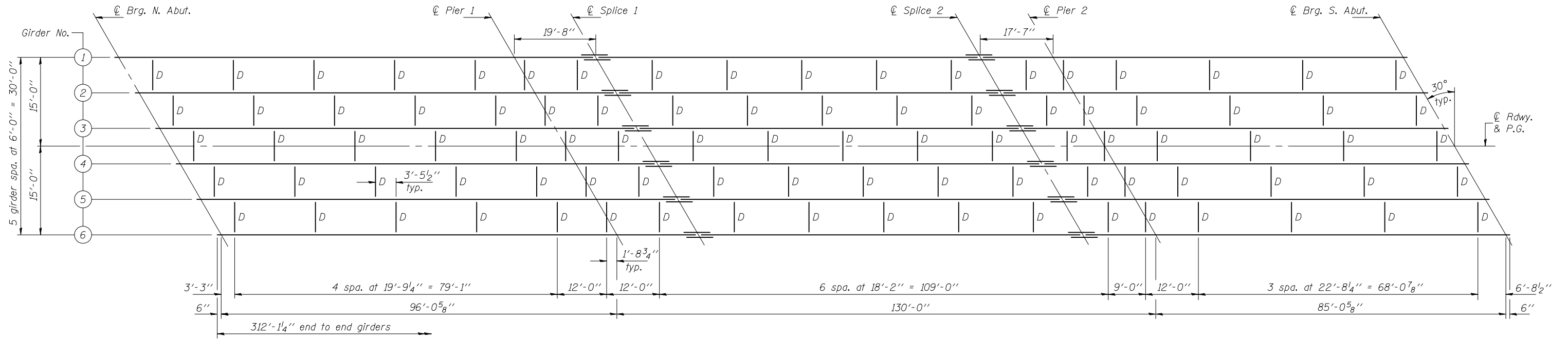
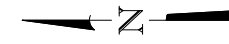
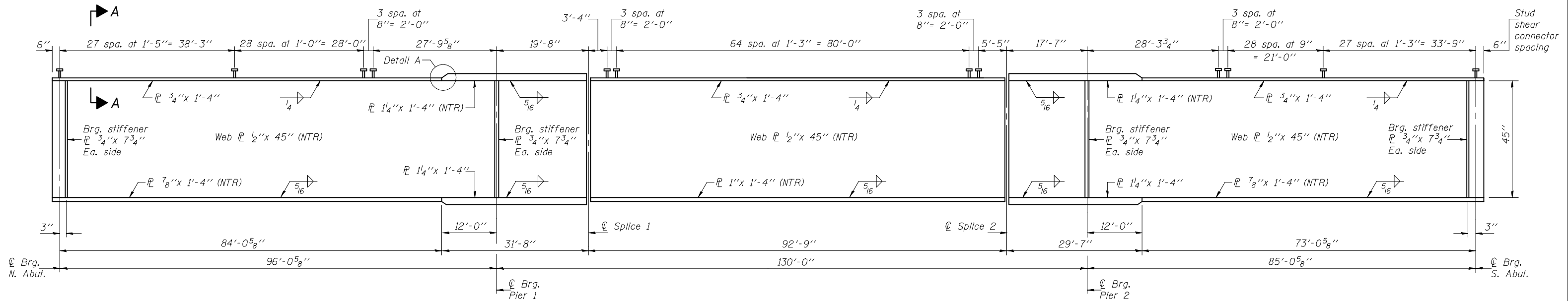


STATE OF ILLINOIS  
DEPARTMENT OF TRANSPORTATION



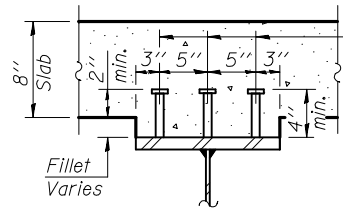
PLAN



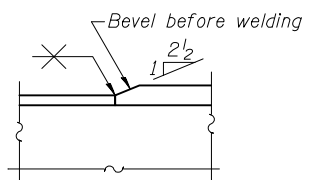
GIRDER ELEVATION

All structural steel shall be AASHTO M 270 Grade 50W.

Notes: All diaphragms shall be installed as steel is erected and secured with erection pins and bolts except as otherwise noted. Individual diaphragms at supports may be temporarily disconnected to install bearing anchor rods. Load carrying components designated "NTR" shall conform to the Supplemental Requirements for Notch Toughness, Zone 2.



SECTION A-A



DETAIL A

DESIGNED	Nicholas R. Barnett
CHECKED	Michael D. Rolape
DRAWN	h.t. duong
CHECKED	NRB/MDR

September 17, 2010  
 EXAMINED *Thomas J. Domagalicki*  
 ENGINEER OF BRIDGE DESIGN  
 PASSED *Ralph E. Anderson*  
 ENGINEER OF BRIDGES AND STRUCTURES

SHEET NO. 15 27 SHEETS	F.A.U. RTE.	SECTION	COUNTY	TOTAL SHEETS	SHEET NO.
	8159	110X-3VB-4	SANGAMON	78	40
CONTRACT NO. 72692					
ILLINOIS FED. AID PROJECT					

STRUCTURAL STEEL  
STRUCTURE NO. 084-0517