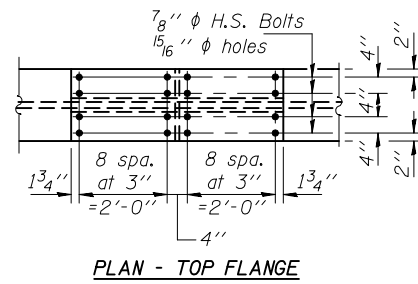
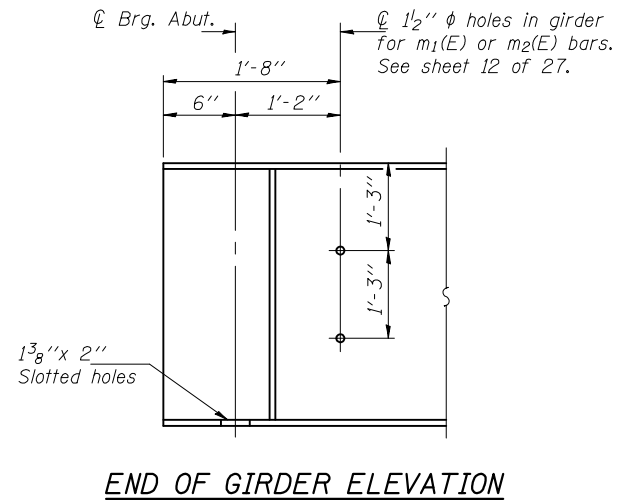


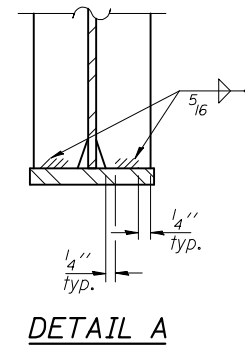
STATE OF ILLINOIS  
DEPARTMENT OF TRANSPORTATION



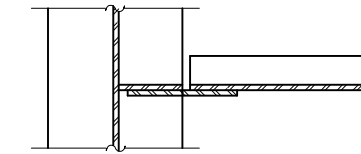
PLAN - TOP FLANGE



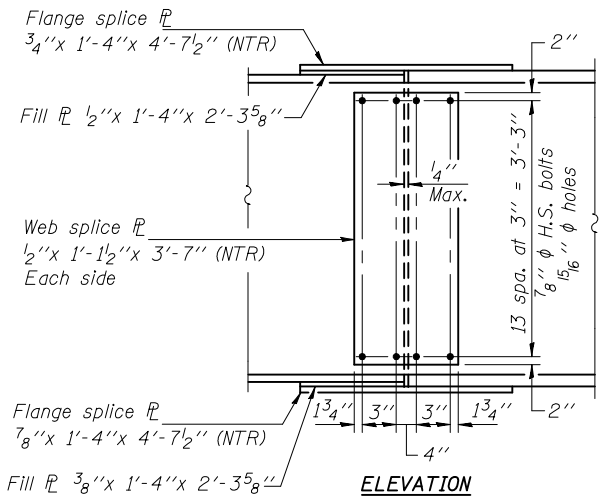
END OF GIRDER ELEVATION



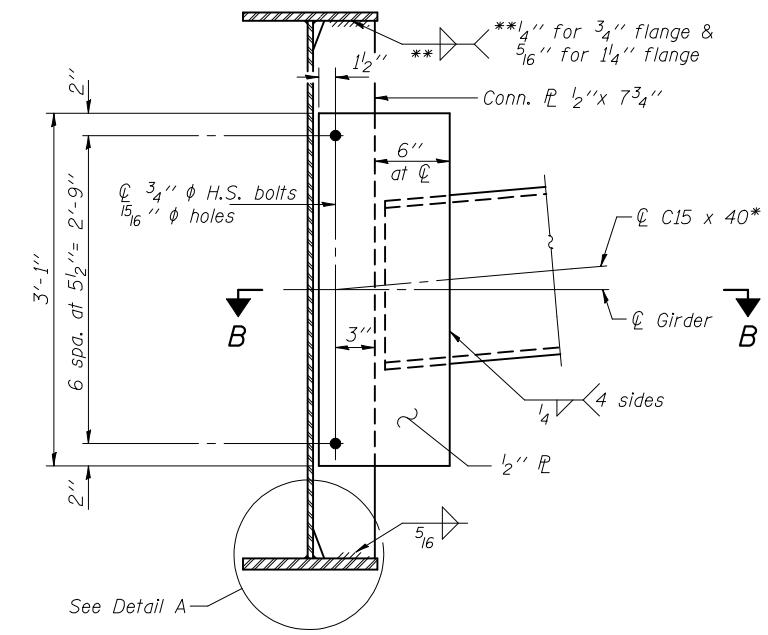
DETAIL A



SECTION B-B

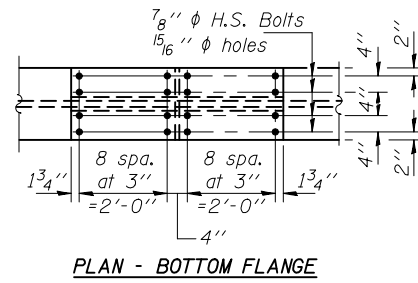


ELEVATION



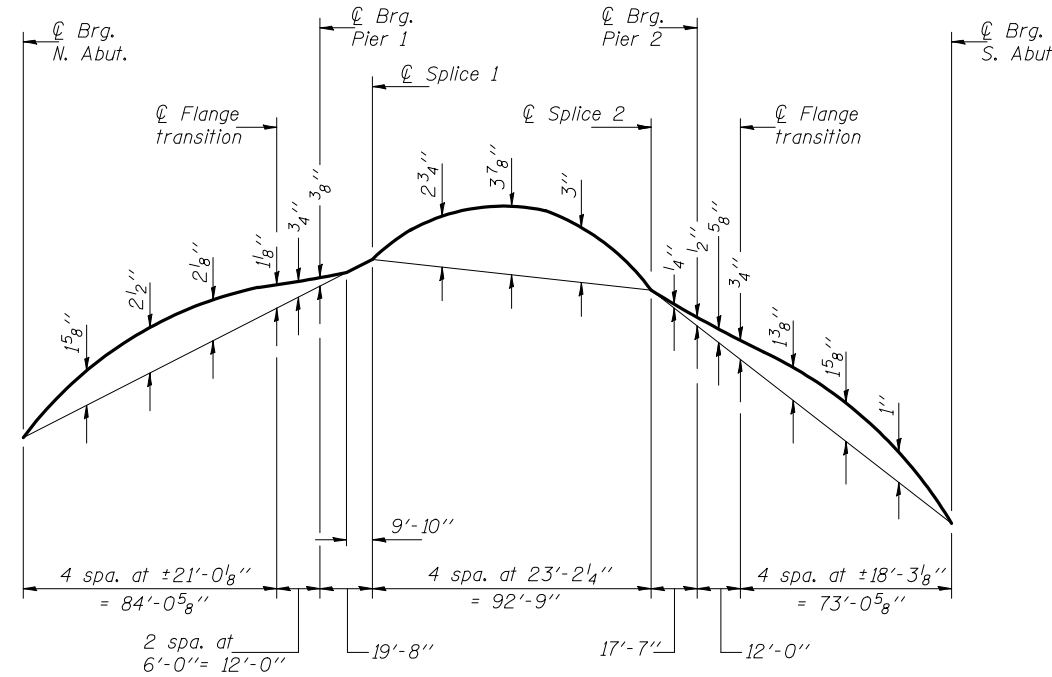
DIAPHRAGM D  
(90 Required)

\*Alternate channels C15x50 are permitted to facilitate material acquisition. Calculated weight of structural steel is based on the lighter section. The alternate, if utilized shall be provided at no extra cost to the Department.



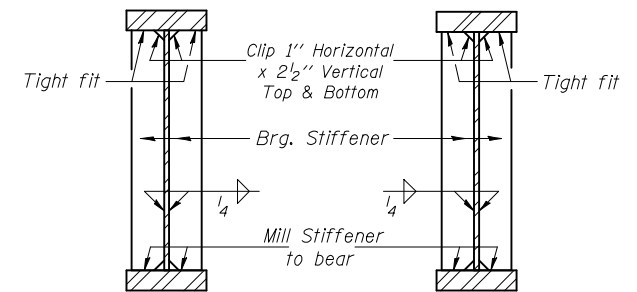
PLAN - BOTTOM FLANGE

SPLICE DETAIL



CAMBER DIAGRAM

Notes: Load carrying components designated "NTR" shall conform to the requirements for Notch Toughness, Zone 2.  
Two hardened washers shall be required for all oversized holes in diaphragms.  
Omit connecting plates on exterior side of exterior girder.



SECTION AT PIER

SECTION AT ABUTMENT

DESIGNED	Nicholas R. Barnett
CHECKED	Michael D. Rolape
DRAWN	h.t. duong
CHECKED	NRB/MDR

EXAMINED	September 17, 2010 <i>Thomas J. Domagala</i> ENGINEER OF BRIDGE DESIGN
PASSED	<i>Ralph E. Anderson</i> ENGINEER OF BRIDGES AND STRUCTURES

STRUCTURAL STEEL DETAILS  
STRUCTURE NO. 084-0517

SHEET NO. 16 27 SHEETS	F.A.U. RTE.	SECTION	COUNTY	TOTAL SHEETS	SHEET NO.
	8159	110X-3VB-4	SANGAMON	78	41
			CONTRACT NO. 72692		
ILLINOIS FED. AID PROJECT					