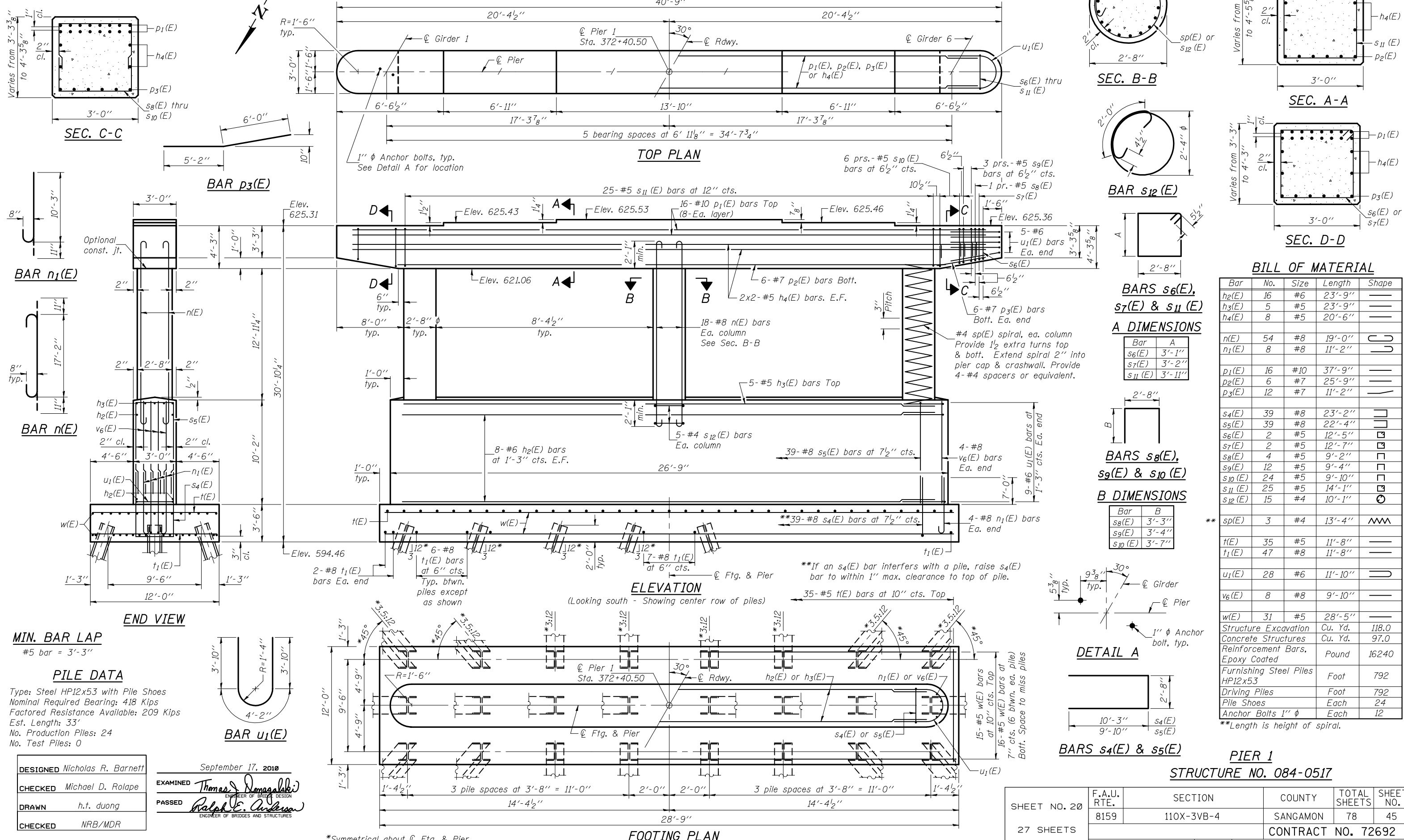


Notes: Space reinforcement in cap to miss anchor bolts.
 Pour steps monolithically with cap.
 For details of piles, see sheet 25 of 27.

STATE OF ILLINOIS
 DEPARTMENT OF TRANSPORTATION



BILL OF MATERIAL

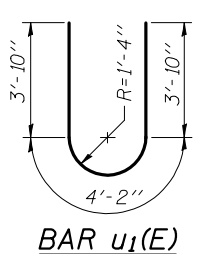
Bar	No.	Size	Length	Shape
h2(E)	16	#6	23'-9"	—
h3(E)	5	#5	23'-9"	—
h4(E)	8	#5	20'-6"	—
n(E)	54	#8	19'-0"	U
n1(E)	8	#8	11'-2"	U
p1(E)	16	#10	37'-9"	—
p2(E)	6	#7	25'-9"	—
p3(E)	12	#7	11'-2"	—
s4(E)	39	#8	23'-2"	U
s5(E)	39	#8	22'-4"	U
s6(E)	2	#5	12'-5"	□
s7(E)	2	#5	12'-7"	□
s8(E)	4	#5	9'-2"	□
s9(E)	12	#5	9'-4"	□
s10(E)	24	#5	9'-10"	□
s11(E)	25	#5	14'-1"	□
s12(E)	15	#4	10'-1"	○
sp(E)	3	#4	13'-4"	W
t(E)	35	#5	11'-8"	—
t1(E)	47	#8	11'-8"	—
u1(E)	28	#6	11'-10"	U
v6(E)	8	#8	9'-10"	—
w(E)	31	#5	28'-5"	—
Structure Excavation			Cu. Yd.	118.0
Concrete Structures			Cu. Yd.	97.0
Reinforcement Bars, Epoxy Coated			Pound	16240
Furnishing Steel Piles HP12x53			Foot	792
Driving Piles			Foot	792
Pile Shoes			Each	24
Anchor Bolts 1" φ			Each	12

**Length is height of spiral.

MIN. BAR LAP
 #5 bar = 3'-3"

PILE DATA

Type: Steel HP12x53 with Pile Shoes
 Nominal Required Bearing: 418 Kips
 Factored Resistance Available: 209 Kips
 Est. Length: 33'
 No. Production Piles: 24
 No. Test Piles: 0



DESIGNED	Nicholas R. Barnett
CHECKED	Michael D. Rolape
DRAWN	h.t. duong
CHECKED	NRB/MDR

EXAMINED	September 17, 2010
PASSED	Thomas J. Domagala ENGINEER OF BRIDGE DESIGN
	Ralph E. Anderson ENGINEER OF BRIDGES AND STRUCTURES

SHEET NO. 20	F.A.U. RTE.	SECTION	COUNTY	TOTAL SHEETS	SHEET NO.
27 SHEETS	8159	110X-3VB-4	SANGAMON	78	45
			CONTRACT NO. 72692		
ILLINOIS FED. AID PROJECT					

PIER 1
STRUCTURE NO. 084-0517

*Symmetrical about Q Ftg. & Pier