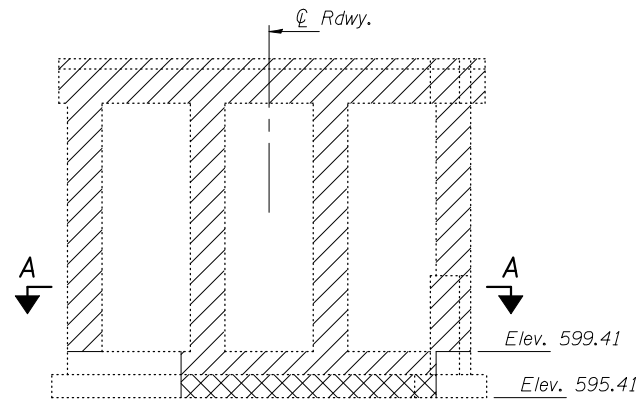
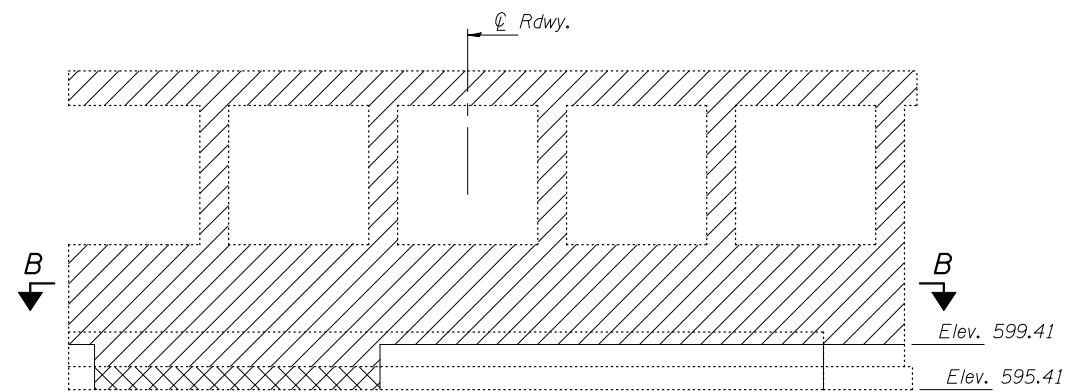


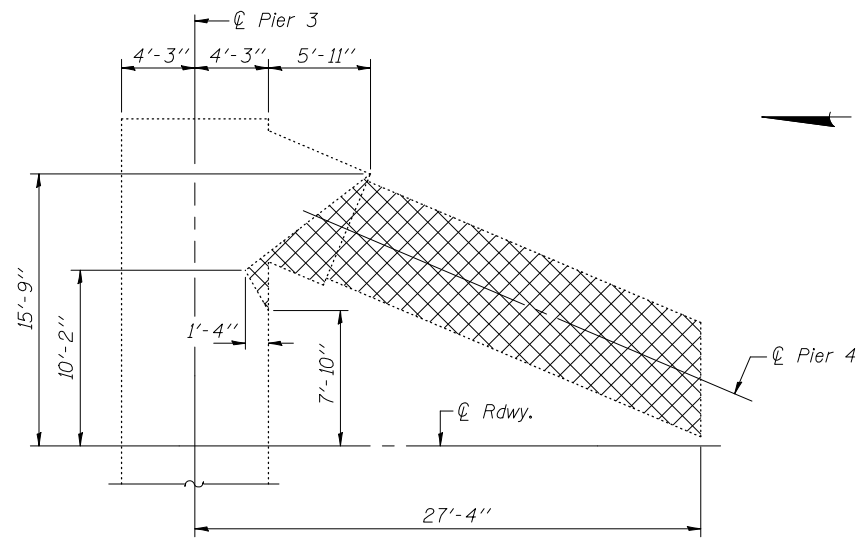
STATE OF ILLINOIS
DEPARTMENT OF TRANSPORTATION



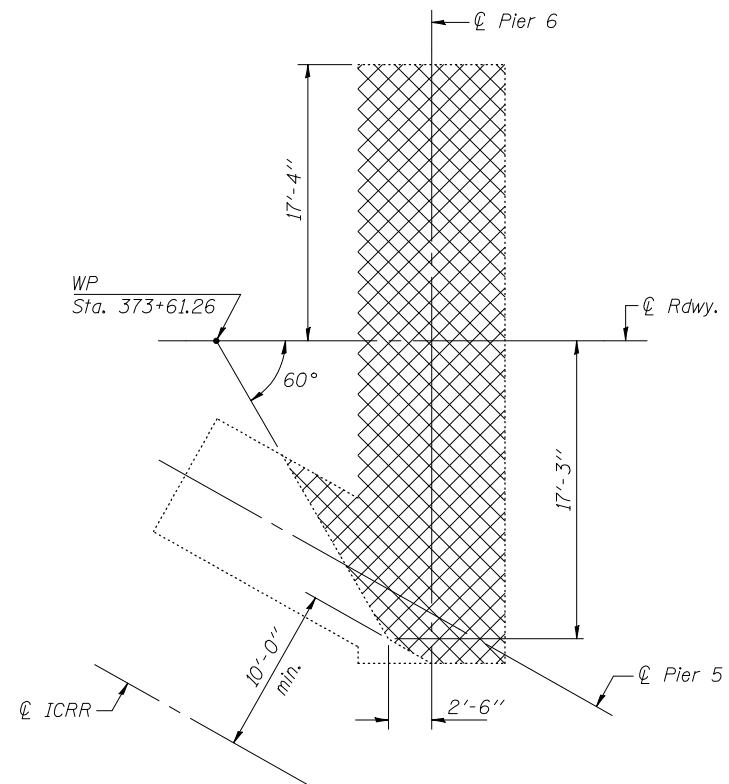
ELEVATION - EXISTING PIER 6
(Looking South)
(Pier 3 similar - Looking North)



ELEVATION - EXISTING PIER 4
(Looking South)
(Pier 5 similar - Looking North)



SECTION B-B - EXISTING PIERS 3 & 4



SECTION A-A - EXISTING PIERS 5 & 6

Notes: Cost of concrete removal is included with Removal of Existing Structures.
Dimensions of concrete removal may be varied in the field to maintain the limits of structure excavation as directed by the Engineer.
Concrete removal shall not take place within 10'-0" of centerline of track.

- LEGEND**
- Limits of concrete removal.
 - Limits of concrete removal in footing.

DESIGNED	Nicholas R. Barnett
CHECKED	Michael D. Rolape
DRAWN	h.t. duong
CHECKED	NRB/MDR

September 17, 2018

EXAMINED *Thomas J. Domagalicki*
ENGINEER OF BRIDGE DESIGN

PASSED *Ralph E. Anderson*
ENGINEER OF BRIDGES AND STRUCTURES

CONCRETE REMOVAL DETAILS
STRUCTURE NO. 084-0517

SHEET NO. 22 27 SHEETS	F.A.U. RTE.	SECTION	COUNTY	TOTAL SHEETS	SHEET NO.
	8159	110X-3VB-4	SANGAMON	78	47
CONTRACT NO. 72692					
ILLINOIS FED. AID PROJECT					