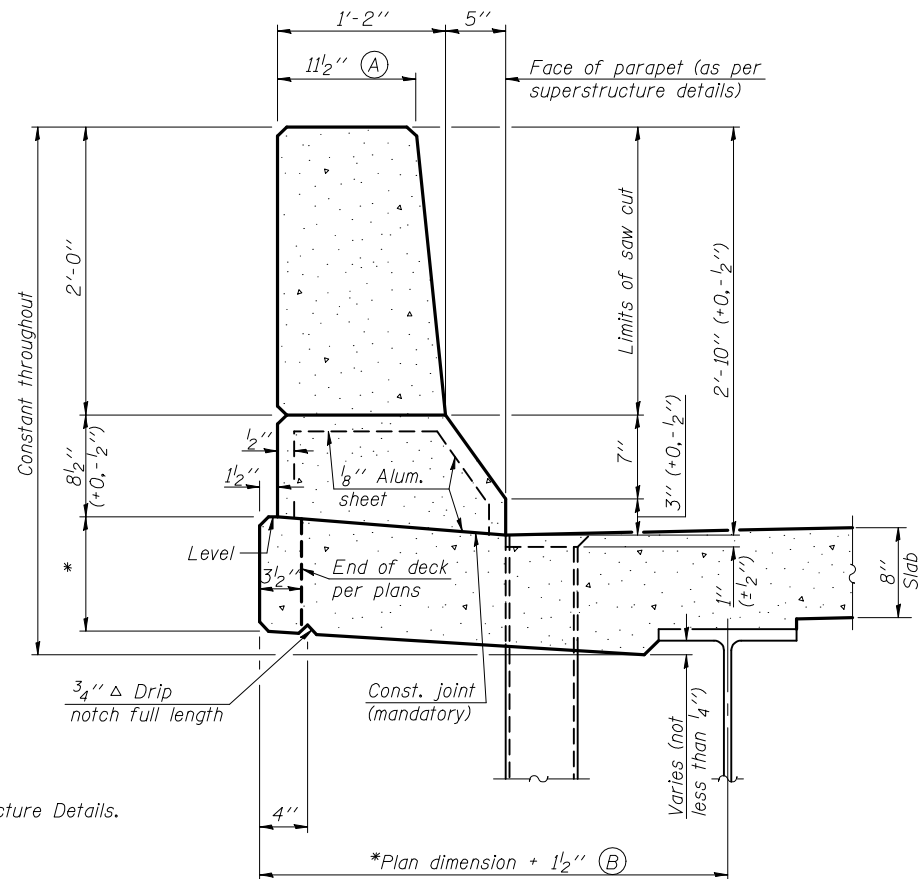
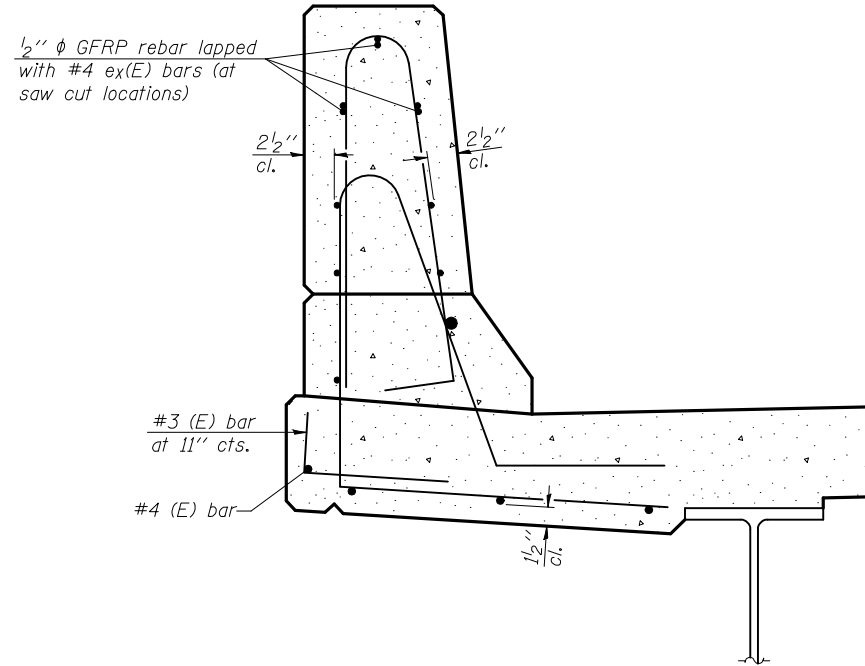


STATE OF ILLINOIS
DEPARTMENT OF TRANSPORTATION

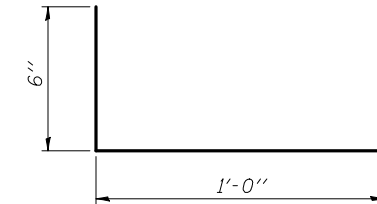


SECTION
(Showing dimensions)

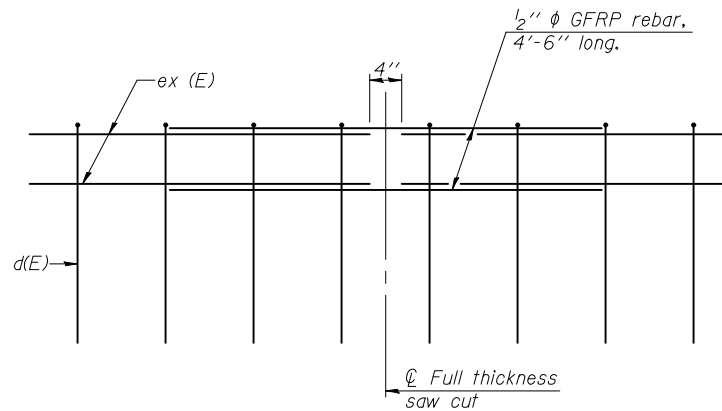


SECTION
(Showing reinforcement clearances for slip forming and additional reinforcement bars)

GENERAL NOTES
All dimensions shall remain the same as shown on superstructure details, except dimensions A and B which are to be revised as shown to provide additional clearance. Additional concrete needed to revise dimension A and B = 0.0165 cu. yds./ft. of parapet.
Place aluminum sheet in curb portion at and near piers. Full thickness saw cut at all joint locations in lieu of cork joint filler.
Steel superstructure shown. Other superstructure types similar.



#3 (E) BAR



GFRP REBAR STIFFENING DETAIL

(Place as shown in parapet section at each parapet joint location.)

CONCRETE PARAPET SLIPFORMING OPTION

STRUCTURE NO. 084-0517

DESIGNED	Nicholas R. Barnett
CHECKED	Michael D. Rolape
DRAWN	h.t. duong
CHECKED	NRB/MDR

EXAMINED	September 17, 2010
PASSED	Thomas J. Demagala ENGINEER OF BRIDGE DESIGN
	Ralph E. Anderson ENGINEER OF BRIDGES AND STRUCTURES

SFP-34

11-1-09

SHEET NO. 24	F.A.U. RTE.	SECTION	COUNTY	TOTAL SHEETS	SHEET NO.
	8159	110X-3VB-4	SANGAMON	78	49
27 SHEETS	CONTRACT NO. 72692				
ILLINOIS FED. AID PROJECT					