

STATE OF ILLINOIS
DEPARTMENT OF TRANSPORTATION
DIVISION OF HIGHWAYS

**PROPOSED
HIGHWAY PLANS**

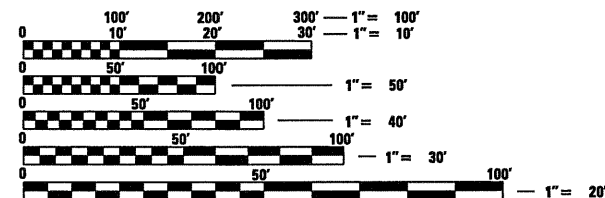
FAU 8159 (FR I-55)
SECTION 110X-3VB-4
PROJECT: ACM-8159(001)
SANGAMON COUNTY
C-96-503-09

FOR INDEX OF SHEETS, SEE SHEET NO. 2

DESIGN DESIGNATION
FAU 8159 (FR I-55)

TWO-LANE MINOR ARTERIAL

EXISTING ADT = 1200 (2008)
PROJECTED ADT = 1620 (2028)
% PU = 96.0%
% SU = 2.0%
% MU = 2.0%

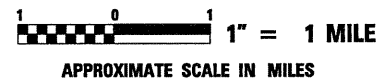
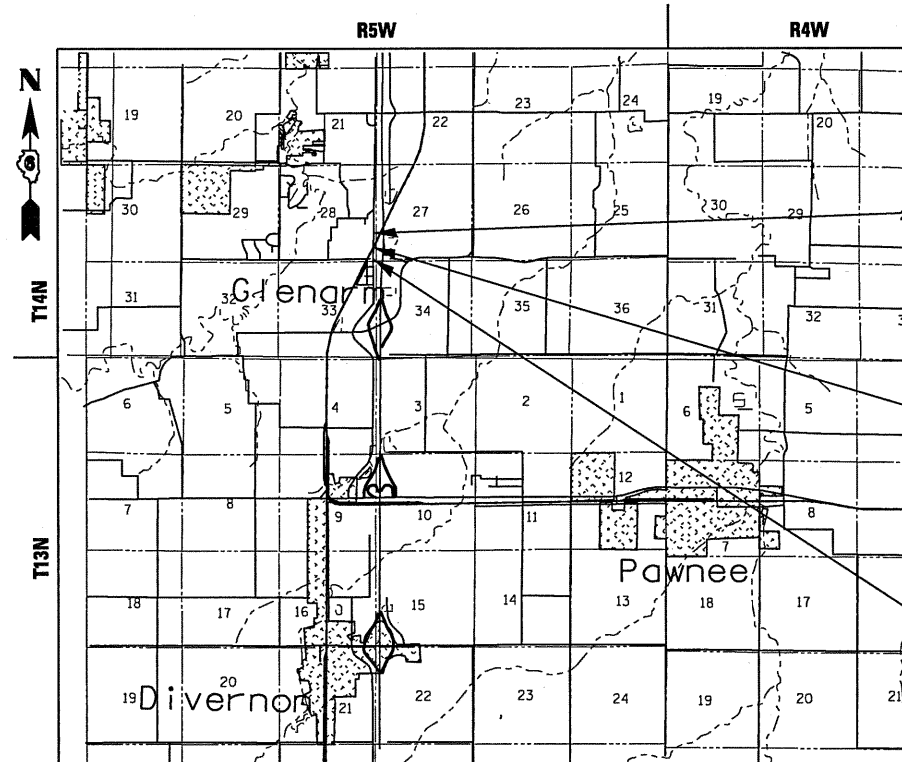


FULL SIZE PLANS HAVE BEEN PREPARED USING STANDARD ENGINEERING SCALES. REDUCED SIZED PLANS WILL NOT CONFORM TO STANDARD SCALES. IN MAKING MEASUREMENTS ON REDUCED PLANS, THE ABOVE SCALES MAY BE USED.

J.U.L.I.E.
JOINT UTILITY LOCATION INFORMATION FOR EXCAVATION
1-800-892-0123 OR 811

PROJECT ENGINEER: SAL MADONIA (217) 782-4761
SQUAD LEADER: MARCUS BRUCE (217) 524-0946

CONTRACT NO. 72692



PROJECT BEGINS
STATION 359 + 75.00

SECTION 110X-3VB-4 INCLUDES
TOTAL STRUCTURE REPLACEMENT
ON THE I-55 FRONTAGE
ROAD FOR EXISTING S.N. 084-0005
OVER THE I.C. RAILROAD
@ STATION 373 + 14.72
SKEW = 30° RT. FWD.
(PROPOSED SN 084-0517)

PROJECT ENDS
STATION 384 + 00.00

F.A.U. RTE.	SECTION	COUNTY	TOTAL SHEETS	SHEET NO.
8159	110X-3VB-4	SANGAMON	78	1
FED. ROAD DIST. NO.		ILLINOIS	CONTRACT NO. 72692	

D-96-567-02



LOCATION OF SECTION INDICATED THUS: - ■ -

STATE OF ILLINOIS
DEPARTMENT OF TRANSPORTATION
DIVISION OF HIGHWAYS

SUBMITTED Aug. 13 2010
Reg. 2. Winkel
DEPUTY DIRECTOR OF HIGHWAYS, REGION ENGINEER

October 1 2010
Scott E. Stitt, P.E.
ASSISTANT ENGINEER OF DESIGN AND ENVIRONMENT

October 1 2010
Christine M. Reedler
DIRECTOR OF HIGHWAYS, CHIEF ENGINEER

BLANK, WESSELINK, COOK & ASSOCIATES
ENGINEERS - CONSULTANTS
DECATUR, ILLINOIS



Charles W. Guthrie, Jr.
CHARLES W. GUTHRIE, JR., P.E.
DATE August 11 2010
EXPIRES NOVEMBER 30, 2011

PRINTED BY THE AUTHORITY
OF THE STATE OF ILLINOIS

TOTAL LENGTH OF PROJECT = 2425 FEET = 0.459 MILES
NET LENGTH OF PROJECT = 2425 FEET = 0.459 MILES