

STATE OF ILLINOIS
DEPARTMENT OF TRANSPORTATION

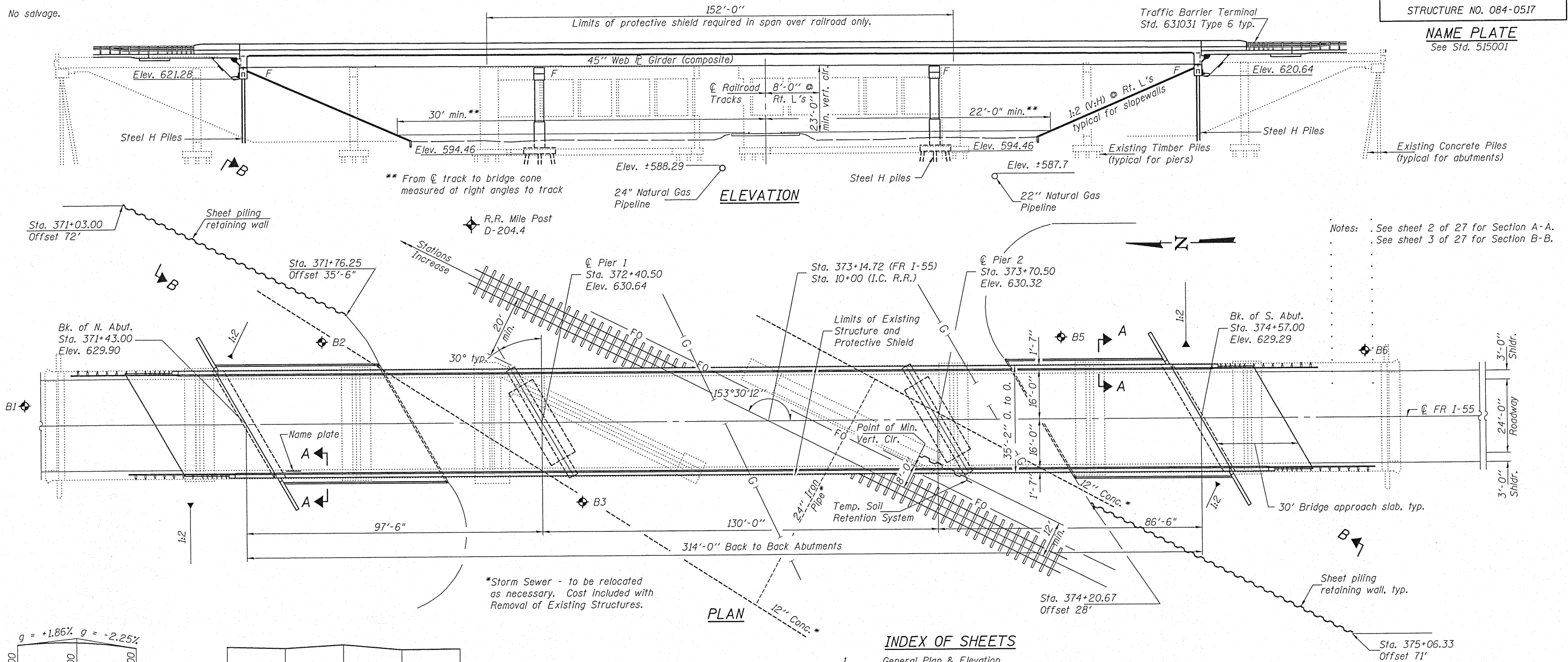
Bench Mark: BM EB#4, Chiseled "□" on existing SE wingwall. Sta. 375+16.102. 18.54' left. Elev. 627.136.

Existing Structure: S.N. 084-0005, originally built in 1955 as F.A. Route 5, Section 110-X-3-VB-VF(3). The existing structure has nine spans (three continuous 3-span wide flange units) and measures 436'-9 1/2" back to back of abutment and 35'-8" out to out of bridge deck. The existing structure is to be removed and replaced. Traffic to be detoured during construction.

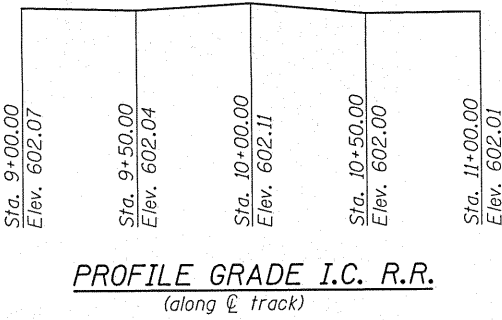
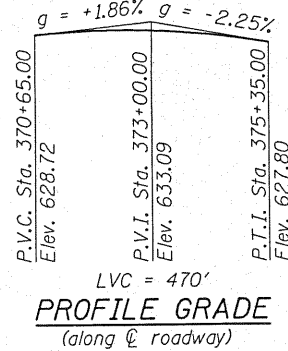
No salvage.

STATION 373+14.72
BUILT 20 BY
STATE OF ILLINOIS
F.A.U. RTE. 8159 SEC. 110X-3VB-4
LOADING HL93
STRUCTURE NO. 084-0517

NAME PLATE
See Std. 515001



Notes: See sheet 2 of 27 for Section A-A.
See sheet 3 of 27 for Section B-B.



LOADING HL-93
Allow 50#/sq. ft. for future wearing surface.

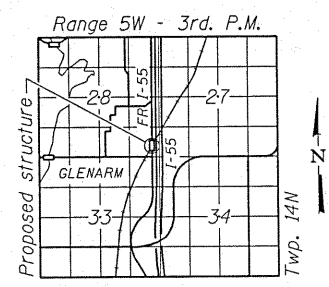
DESIGN SPECIFICATIONS
2007 AASHTO LRFD Bridge Design Specifications with 2009 Interims

DESIGN STRESSES
FIELD UNITS
f_c' = 3,500 psi
f_y = 60,000 psi (reinforcement)
f_y = 50,000 psi (M270 Grade 50W)

SEISMIC DATA
Seismic Performance Zone (SPZ) = 1
Design Spectral Acceleration @ 1.0 sec. (SD1) = 0.115 g
Design Spectral Acceleration @ 0.2 sec. (SDS) = 0.228 g
Soil Site Class = C

INDEX OF SHEETS

- 1 General Plan & Elevation
- 2 General Data
- 3 Sheet Piling Retaining Wall Details
- 4-7 Top of Slab Elevations
- 8 Top of North Approach Slab Elevations
- 9 Top of South Approach Slab Elevations
- 10 Superstructure
- 11 Superstructure Details
- 12 Diaphragm Details
- 13-14 Bridge Approach Slab Details
- 15 Structural Steel
- 16 Structural Steel Details
- 17 Bearing Details
- 18 North Abutment
- 19 South Abutment
- 20 Pier 1
- 21 Pier 2
- 22 Concrete Removal
- 23 Bar Splicer Assembly Details
- 24 Concrete Parapet Slip Forming Option
- 25 Steel H Pile Details
- 26-27 Soil Boring Logs

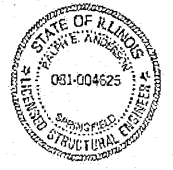


LOCATION SKETCH

GENERAL PLAN & ELEVATION
FR I-55 (PALM ROAD) OVER
ILLINOIS CENTRAL RAILROAD
F.A.U. RTE. 8159 - SEC. 110X-3VB-4
SANGAMON COUNTY
STATION 373+14.72
STRUCTURE NO. 084-0517

DESIGNED: *John R. Benoit*
CHECKED: *David J. Reigel*
DRAWN: h.t. duong
CHECKED: NRB/MDR

EXAMINED: *Thomas J. Anderson*
PASSED: *Robert E. Anderson*
ENGINEER OF BRIDGE DESIGN
ENGINEER OF BRIDGES AND STRUCTURES



EXPIRES 11-30-2010

SHEET NO. 1	F.A.U. RTE. 8159	SECTION 110X-3VB-4	COUNTY SANGAMON	TOTAL SHEETS 78	SHEET NO. 26
27 SHEETS	CONTRACT NO. 72692			ILLINOIS FED. AID PROJECT	