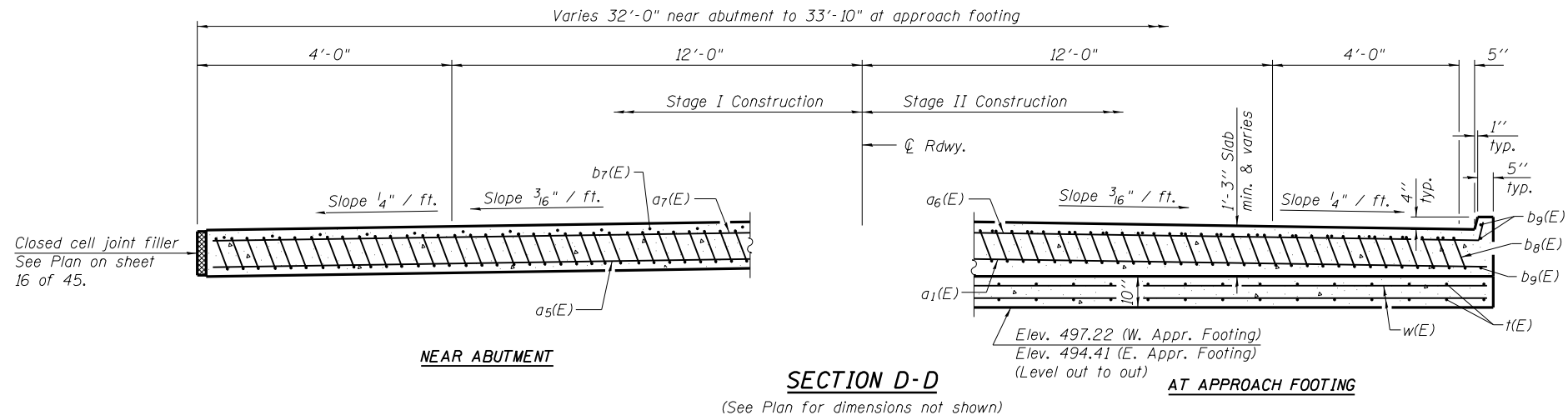


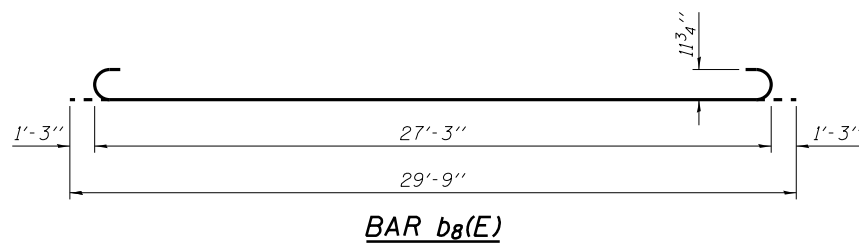
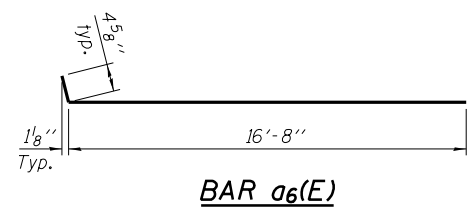
Notes:
 See sheet 16 of 45 for Detail A.
 Approach slab and parapet concrete shall be paid for as Concrete Superstructure.
 Approach footing concrete shall be paid for as Concrete Structures.
 Reinforcement shall be paid for as Reinforcement Bars, Epoxy Coated.
 For v(E) bar details, see sheets 28 and 30 of 45.
 The approach footing maximum applied service bearing pressure (Qmax) = 2.0 ksf.
 For bar splicer details, see sheet 36 of 45.
 Cost of excavation for approach footing included with Concrete Structures.
 For Porous Granular Embankment (Special) and drainage treatment details, see sheet 2 of 45.



* Tilt #9 b8(E) bars as required to maintain clearance.
 *** Cost included with Concrete Superstructure.

**TWO APPROACHES
 BILL OF MATERIAL**

Bar	No.	Size	Length	Shape
a1(E)	108	#5	16'-8"	—
a5(E)	76	#5	15'-9"	—
a6(E)	60	#4	17'-1"	—
a7(E)	40	#4	15'-9"	—
b7(E)	56	#4	29'-8"	—
b8(E)	152	#9	29'-9"	—
b9(E)	12	#4	14'-8"	—
t(E)	144	#4	9'-8"	—
w(E)	160	#5	16'-8"	—
Concrete Superstructure		Cu. Yd.	119.8	
Concrete Structures		Cu. Yd.	20.9	
Reinforcement Bars, Epoxy Coated		Pound	24,540	
Bar Splicers		Each	222	



DESIGNED	RJP
CHECKED	ADL
DRAWN	RJP
CHECKED	ADL

(Sheet 2 of 2)
BRIDGE APPROACH SLAB DETAILS
S.N. 085-0514

SHEET NO.17 45 SHEETS	F.A.P RTE.	SECTION	COUNTY	TOTAL SHEETS	SHEET NO.
	713	120B-3	SCHUYLER	75	37
			CONTRACT NO. 72A03		
FED. ROAD DIST. NO.		ILLINOIS	FED. AID PROJECT		